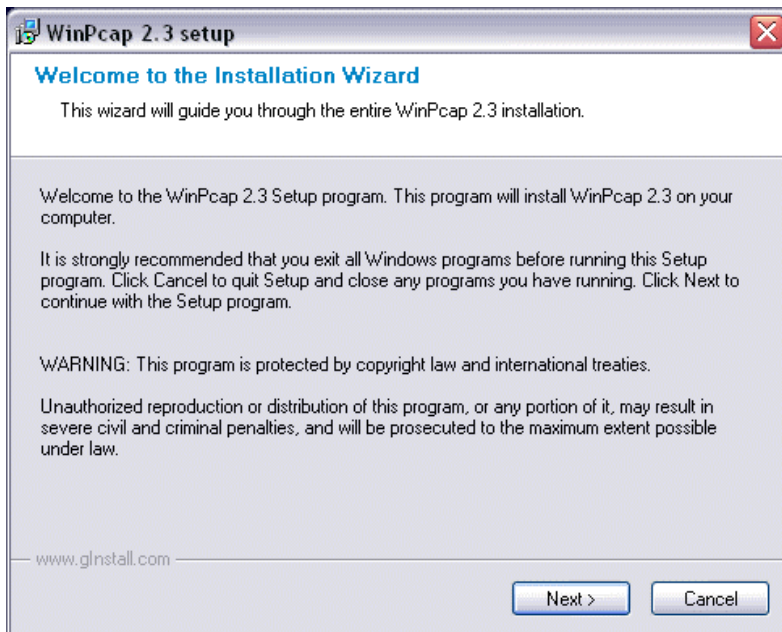


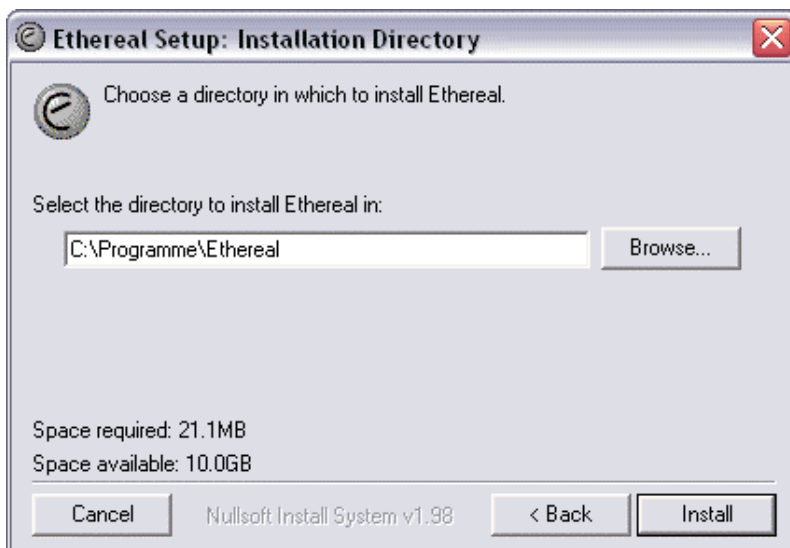
## How to install the *Ethereal* Ethernet LAN Sniffer Tool for Windows

The Starter Kit CD-ROM for the DIL/NetPC ADNP/1520 comes with a Windows version of the *Ethereal* Ethernet LAN sniffer (the world's most popular network protocol analyzer). Please watch the Internet at <http://www.ethereal.com/> for newer versions and user documentation.

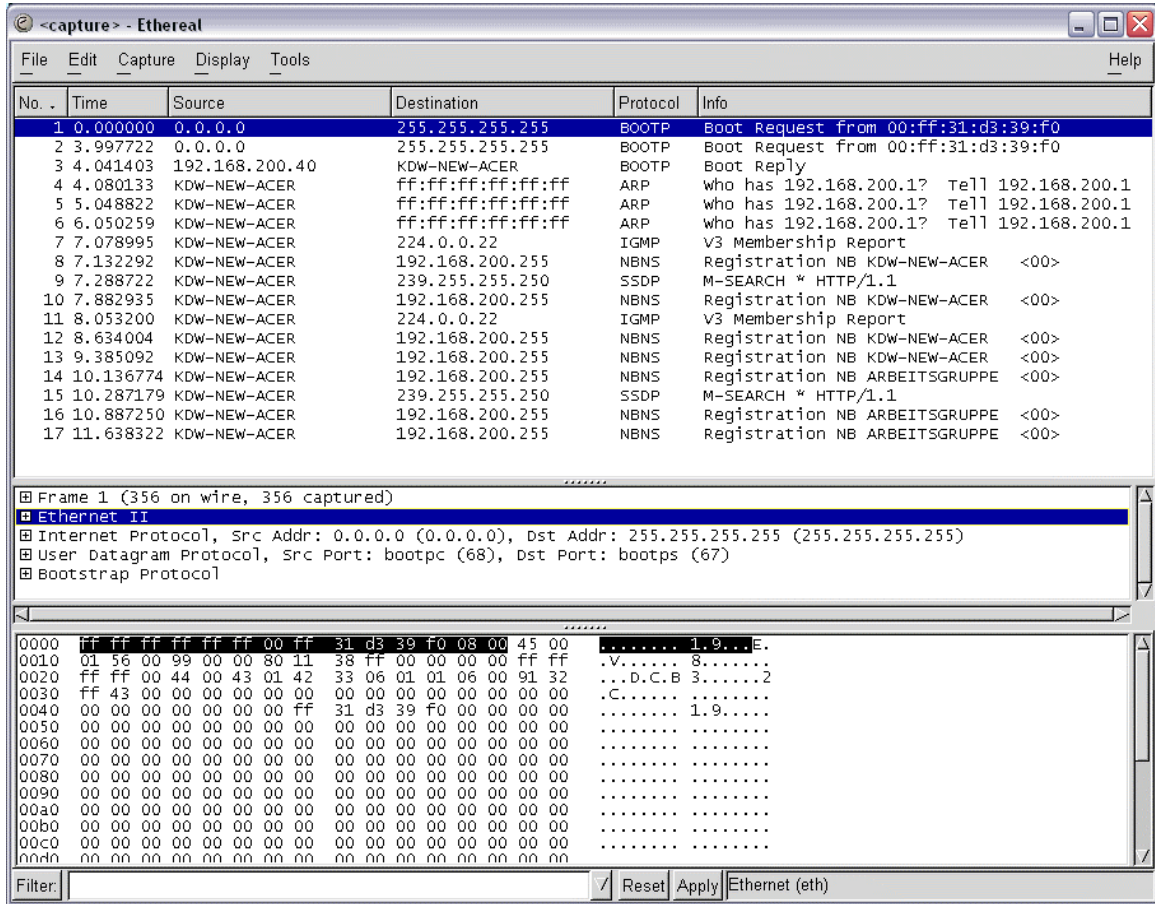
- **1. Step:** Install the packet capture utility *WinPcap*. Run the executable *WinPcap\_2-3* direct from the CD-ROM directory *\Ethereal-LAN-Sniffer-Win32*. Follow the instructions of this install tool.



- **2. Step:** Reboot your Windows PC.
- **3. Step:** Install *Ethereal*. Run the executable *ethereal-setup-0.9.5* direct from the CD-ROM directory *\Ethereal-LAN-Sniffer-Win32*. Please follow the instructions of the install tool.



- **4. Step:** Run *Ethereal* on your PC. First capture Ethernet LAN traffic (menu item *Capture*). Then analyze the results. The following picture shows a sample.



**Please note:** *Ethereal* for Windows needs *WinPcap* for packet capturing. The Internet offers many different versions for *Ethereal* and *WinPcap*. Not every *Ethereal* version works with each *WinPcap* version in your Windows environment. In the case of problems please try different version combinations for *Ethereal* and *WinPcap*.

That's all.