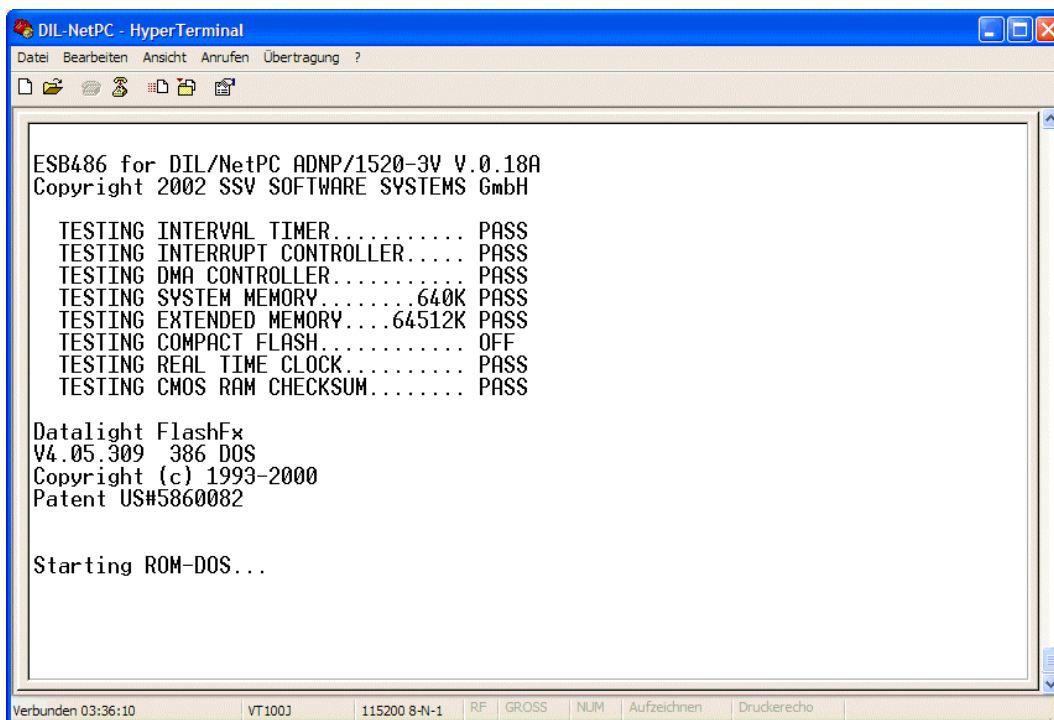


## How to use CompactFlash Cards from ROM-DOS

The DIL/NetPC ADNP/1520 offers the interface signals for CompactFlash cards. The ADNP/1520 default BIOS don't support external CompactFlash cards. To enable the CompactFlash support for ROM-DOS, it is necessary to copy the right BIOS file version to the ADNP/1520 flash memory.

- **1. Step:** Setup a serial link (**RS232 Serial Link**) between the DIL/NetPC ADNP/1520 COM1 serial port and a serial port of your PC system. Use a null-modem cable for the physical connection between the COM1 port of the DIL/NetPC ADNP/1520 and the PC COM port. For more details about this connection please use the *DIL/NetPC ADNP/1520 DNP/SK10 Starter Kit User Manual*.
- **2. Step:** Set-up the communication parameters for the PC terminal emulation program to 115.200 bps, 8 data bits, 1 stop bit, no parity bit and no handshaking (**115.200-8-N-1**). Run your PC terminal emulation program.
- **3. Step:** Set the RCM jumper for the ADNP/1520. Then power-up the ADNP/1520 for booting ROM-DOS.



```
DIL-NetPC - HyperTerminal
Datei Bearbeiten Ansicht Anrufen Übertragung ?
[Icons]
ESB486 for DIL/NetPC ADNP/1520-3V V.0.18A
Copyright 2002 SSV SOFTWARE SYSTEMS GmbH

TESTING INTERVAL TIMER..... PASS
TESTING INTERRUPT CONTROLLER.... PASS
TESTING DMA CONTROLLER..... PASS
TESTING SYSTEM MEMORY.....640K PASS
TESTING EXTENDED MEMORY...64512K PASS
TESTING COMPACT FLASH..... OFF
TESTING REAL TIME CLOCK..... PASS
TESTING CMOS RAM CHECKSUM..... PASS

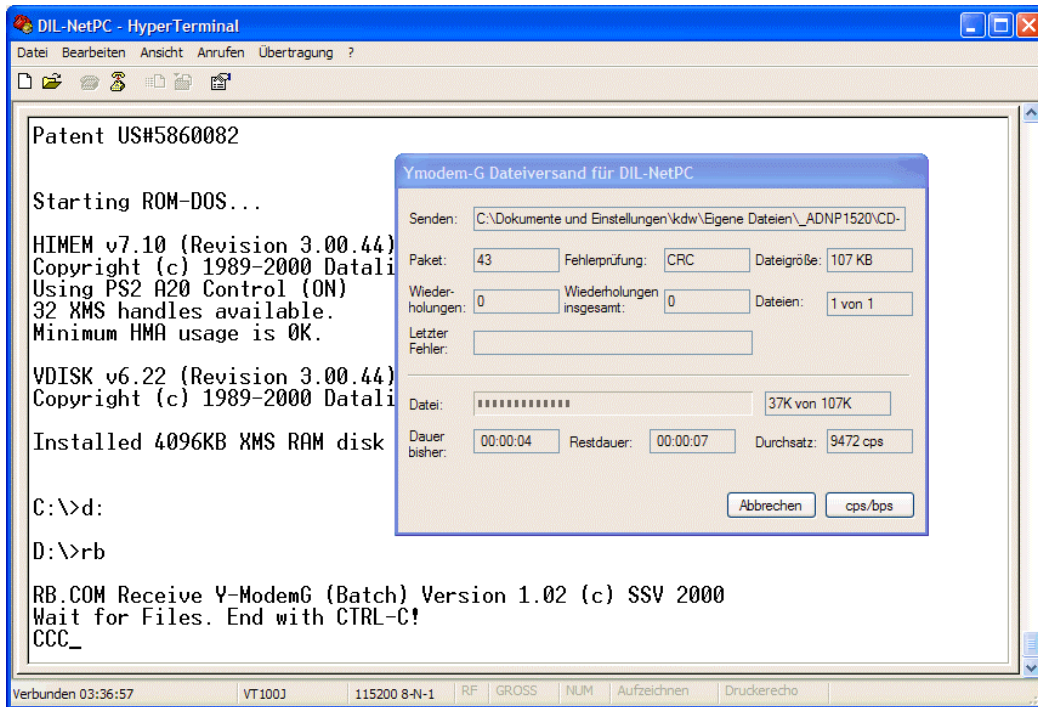
Datalight FlashFx
V4.05.309 386 DOS
Copyright (c) 1993-2000
Patent US#5860082

Starting ROM-DOS...

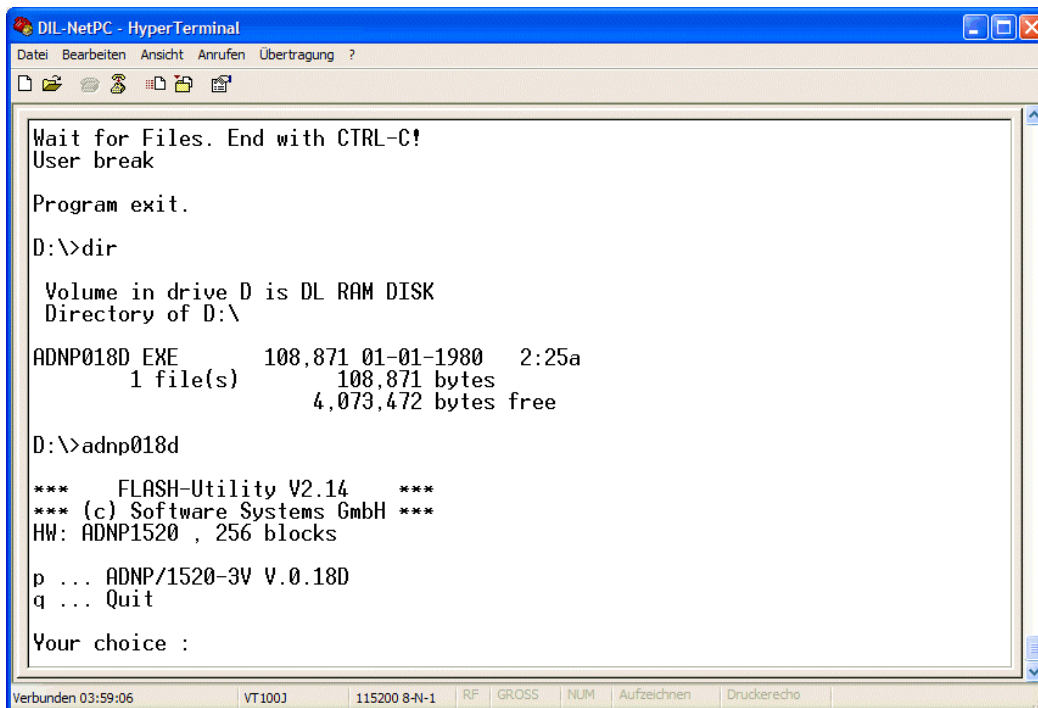
Verbunden 03:36:10 | VT100J | 115200 8-N-1 | RF | GROSS | NUM | Aufzeichnen | Druckerecho
```

- **4. Step:** Change to the DOS directory **D:\** (default: RAM disk). Then run the DOS download program **rb** and transmit a BIOS version file with CompactFlash support as DOS executable (i.e. the file **ADNP018D.EXE**) from your DIL/NetPC ADNP/1520 Starter Kit CD-ROM to your ADNP/1520.

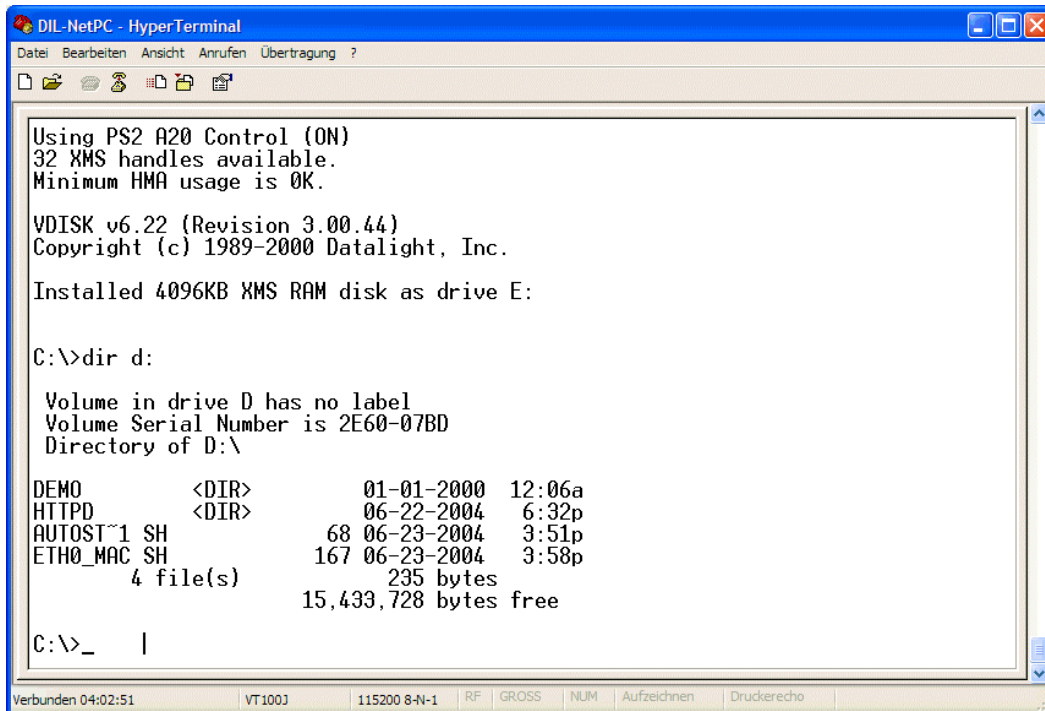
Use the **File Transmit function** of your terminal emulation program. Select the **Y-Modem** or **Y-Modem-G** protocol.



- **5. Step:** Run the BIOS version file with CompactFlash support as DOS program. Answer all questions. This step updates the ADNP/1520 BIOS.



- **6. Step:** Reboot your ADNP/1520. This allows the new BIOS to initialize the CompactFlash interface. After this reboot a CompactFlash card will be DOS drive **D:**. The RAM disk is then **E:**.



```
DIL-NetPC - HyperTerminal
Datei Bearbeiten Ansicht Anrufen Übertragung ?
Using PS2 A20 Control (ON)
32 XMS handles available.
Minimum HMA usage is 0K.

VDISK v6.22 (Revision 3.00.44)
Copyright (c) 1989-2000 Datalight, Inc.

Installed 4096KB XMS RAM disk as drive E:

C:\>dir d:

Volume in drive D has no label
Volume Serial Number is 2E60-07BD
Directory of D:\

DEMO          <DIR>          01-01-2000  12:06a
HTTPD        <DIR>          06-22-2004   6:32p
AUTOST~1 SH   68 06-23-2004   3:51p
ETH0_MAC SH  167 06-23-2004   3:58p
            4 file(s)          235 bytes
            15,433,728 bytes free

C:\>_ |
```

Verbunden 04:02:51 | VT100J | 115200 8-N-1 | RF | GROSS | NUM | Aufzeichnen | Druckerecho

**Please note:** The Starter Kit CD-ROM contains a PDF with a BIOS Version File overview. Please scan the CD-ROM directory **\BIOS** for this file.

That is all.