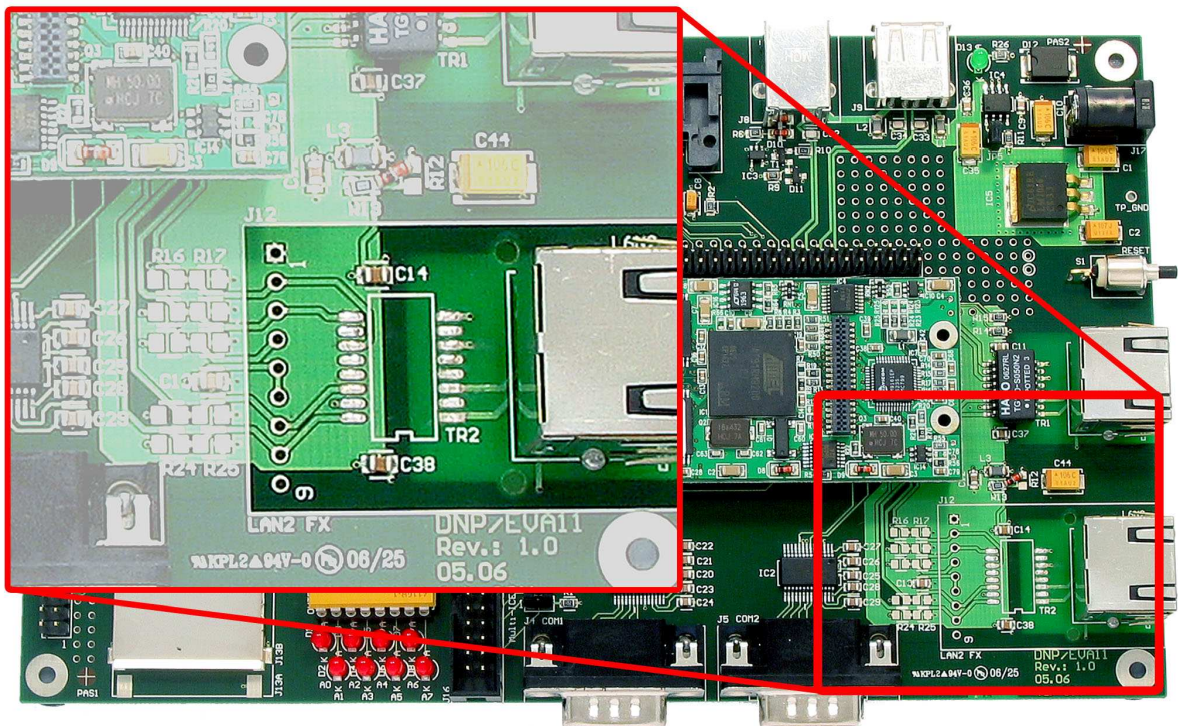


How to prepare the DNP/EVA11 for Wi-Fi with the E2W/ESL1 Module

The E2W/ESL1 module is over the ADNP/9200 two-part ESL connector direct connected to the LAN2 Ethernet network interface. This means, the E2W/ESL1 Wi-Fi module works for the ADNP/9200 as an Ethernet-to-Wi-Fi bridge.

- **1. Step:** Make sure that you are using the **DNP/EVA11-WiFi** version. This special version of the DNP/EVA11 comes without the TR2 magnetic for the LAN2 Ethernet LAN interface. The DNP/EVA11 is shipped as part of the ADNP/9200 starter kit **DNP/SK27-WiFi**.



Please note: If you are an electronic expert, it is also possible to remove the TR2 magnetic from a DNP/EVA11 with the help of a solder tool to migrate to DNP/EVA11-WiFi.

That is all.