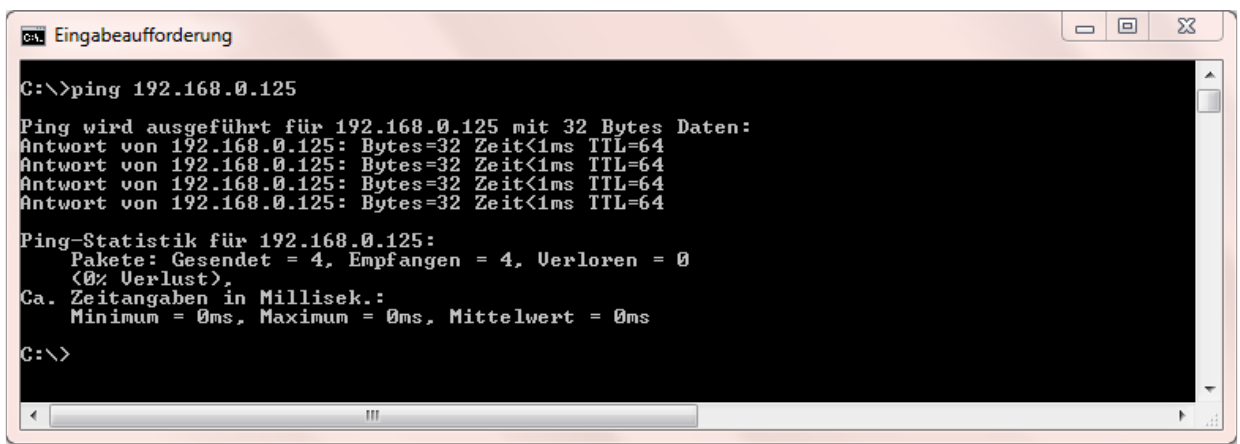


How to use a Windows 7-based PC

If your host PC runs Windows 7 you have to solve some special configuration and installation problems. A standard Windows 7 PC installation doesn't allow to *ping* the DIL/NetPC DNP/9265 over the Ethernet connection. Windows 7 also doesn't support *Telnet* sessions.

- **1. Step:** Before your first *ping* (see also 2.9 *Checking Ethernet-based TCP/IP Communication* of the *DNP/SK30 Embedded Linux Starter Kit First Steps* user manual) from the PC to the DIL/NetPC DNP/9265 please go to the Windows 7 firewall setup (see setup item *Windows Firewall with Advanced Security*). Then change the **Inbound Rules** and **Outbound Rules** for **ICMP** (Enable inbound and outbound ICMP traffic for IPv4).



```

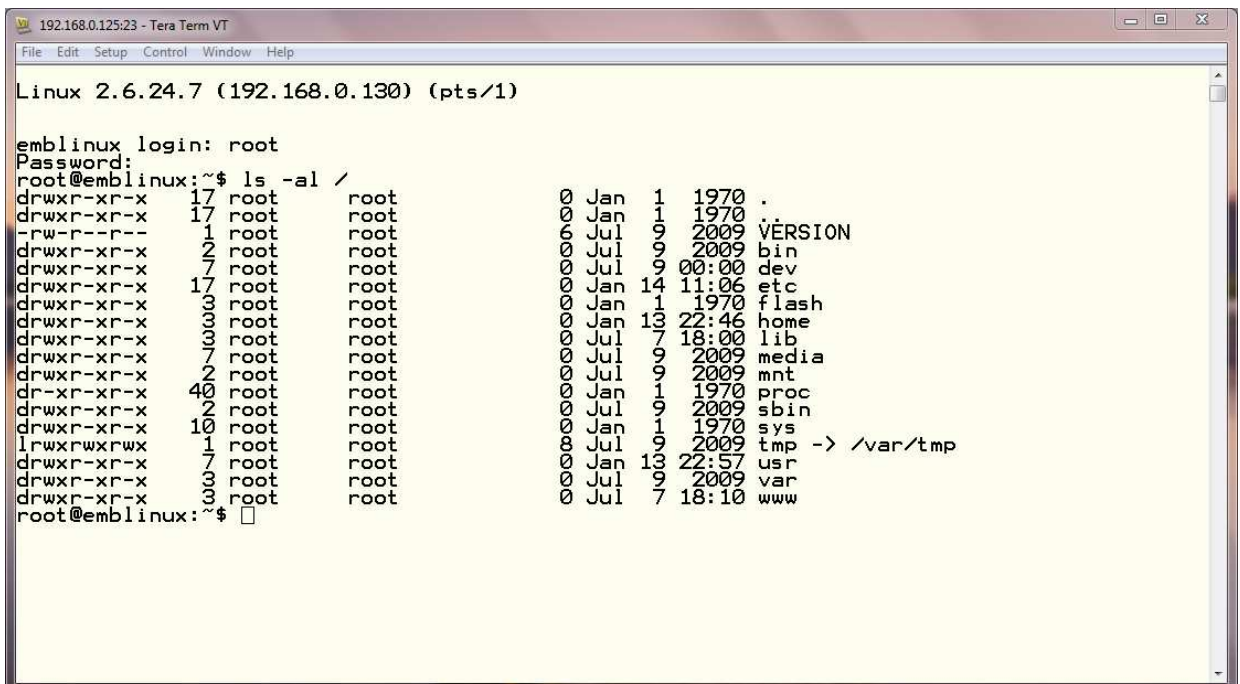
C:\>ping 192.168.0.125

Ping wird ausgeführt für 192.168.0.125 mit 32 Bytes Daten:
Antwort von 192.168.0.125: Bytes=32 Zeit<1ms TTL=64
Antwort von 192.168.0.125: Bytes=32 Zeit<1ms TTL=64
Antwort von 192.168.0.125: Bytes=32 Zeit<1ms TTL=64
Antwort von 192.168.0.125: Bytes=32 Zeit<1ms TTL=64

Ping-Statistik für 192.168.0.125:
    Pakete: Gesendet = 4, Empfangen = 4, Verloren = 0
    (0% Verlust),
    Ca. Zeitangaben in Millisek.:
    Minimum = 0ms, Maximum = 0ms, Mittelwert = 0ms

C:\>
  
```

- **2. Step:** The standard Windows 7 configuration comes without a *Telnet* client program. Please download the free tool *TeraTerm* from <http://tssh2.sourceforge.jp> or any other download location. Then install *TeraTerm* on your Windows 7 machine. After that please run *TeraTerm* as a *Telnet* client in VT100 mode (see *TeraTerm Terminal setup – Terminal ID*).



```

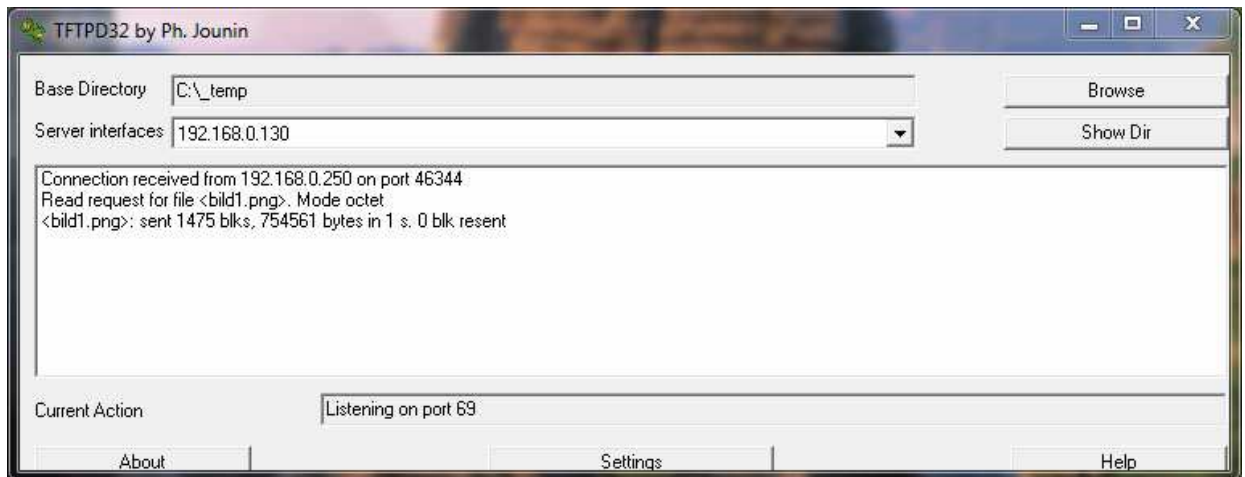
Linux 2.6.24.7 (192.168.0.130) (pts/1)

emblinux login: root
Password:
root@emblinux:~$ ls -al /
drwxr-xr-x 17 root root 0 Jan 1 1970 .
drwxr-xr-x 17 root root 0 Jan 1 1970 ..
-rw-r--r-- 1 root root 6 Jul 9 2009 VERSION
drwxr-xr-x 2 root root 0 Jul 9 2009 bin
drwxr-xr-x 7 root root 0 Jul 9 00:00 dev
drwxr-xr-x 17 root root 0 Jan 14 11:06 etc
drwxr-xr-x 3 root root 0 Jan 1 1970 flash
drwxr-xr-x 3 root root 0 Jan 13 22:46 home
drwxr-xr-x 3 root root 0 Jul 7 18:00 lib
drwxr-xr-x 7 root root 0 Jul 9 2009 media
drwxr-xr-x 2 root root 0 Jul 9 2009 mnt
dr-xr-xr-x 40 root root 0 Jan 1 1970 proc
drwxr-xr-x 10 root root 0 Jul 9 2009 sbin
drwxr-xr-x 1 root root 0 Jan 1 1970 sys
lrwxrwxrwx 1 root root 88 Jul 9 2009 tmp -> /var/tmp
drwxr-xr-x 7 root root 0 Jan 13 22:57 usr
drwxr-xr-x 3 root root 0 Jul 9 2009 var
drwxr-xr-x 3 root root 0 Jul 7 18:10 www

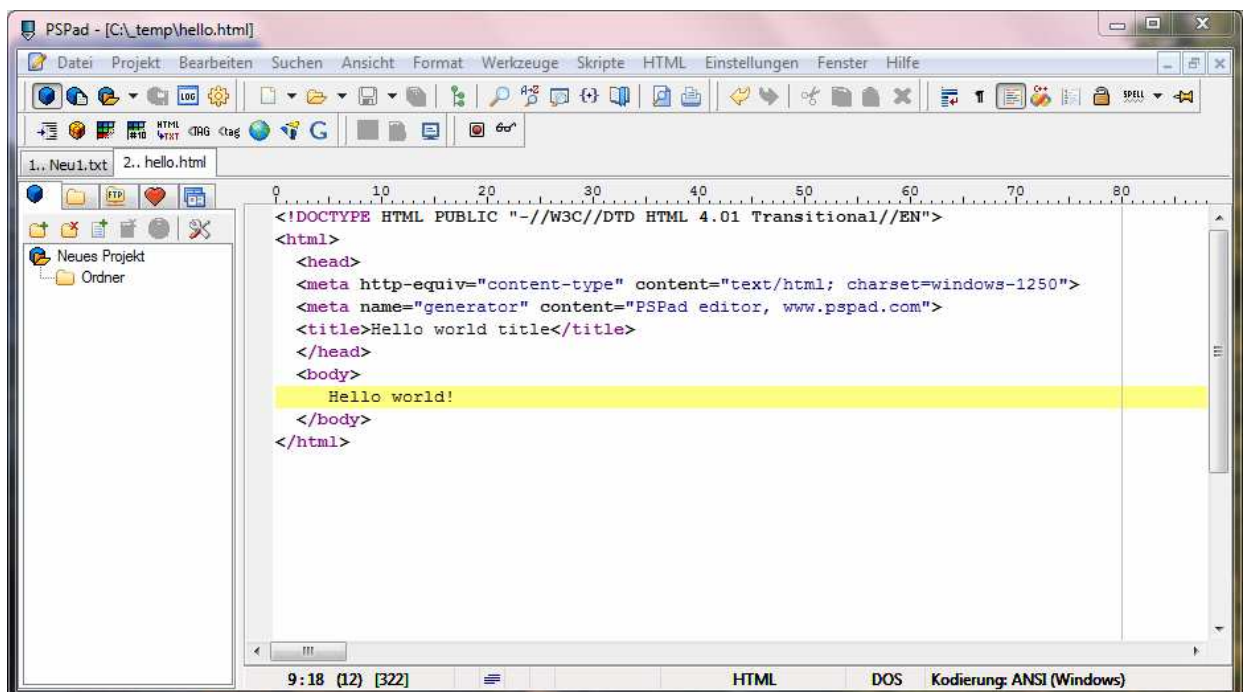
root@emblinux:~$
  
```

The standard Windows 7 configuration doesn't allow any *Telnet* traffic. Please go again to the Windows 7 firewall setup (see setup item *Windows Firewall with Advanced Security*). Then create a new outbound rule for the TCP protocol and port 23 (Enable the usage of TCP port 23).

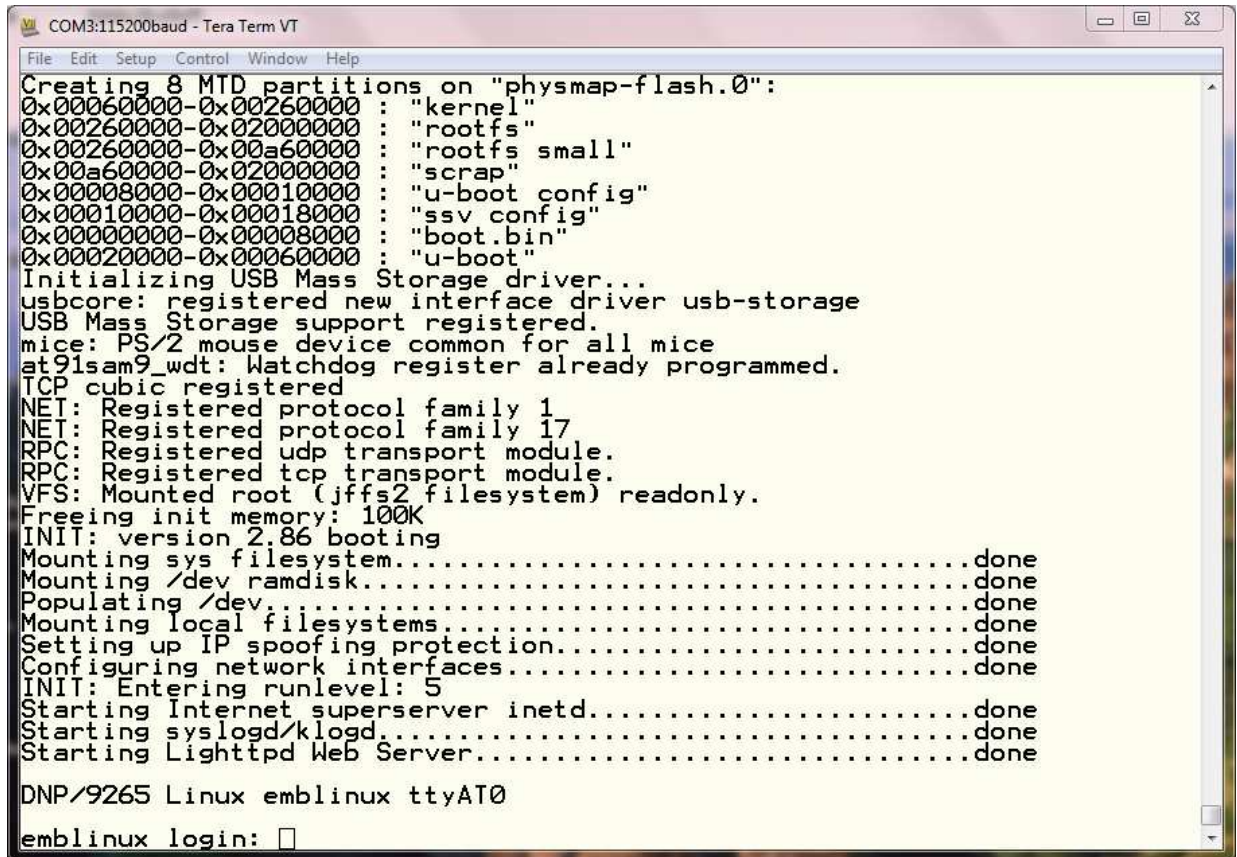
- **3. Step:** For file downloads and uploads between the PC to the DIL/NetPC DNP/9265 please use TFTP. The DNP/9265 starter kit CD-ROM offers the TFTP32 server for Windows PC (please see CD-ROM directory *TFTP-Server-Win32*). This server works also with Windows 7.



- **4. Step:** For editing HTML files (see also 2.14 *First HTML Page* of the *DNP/SK30 Embedded Linux Starter Kit First Steps* user manual) on your Windows 7-based PC please use the free *PSPad* editor.



- **5. Step:** Windows 7 comes without the *HyperTerminal* terminal emulation program. This well-known program was a part of older Windows version. It is possible to use *TeraTerm* also as a terminal emulation program over RS232-based links. Please run *TeraTerm* in the serial port mode. Then choose the RS232 COM port instead of *Telnet* and set this port to 115.200/N/8/1.



```
COM3:115200baud - Tera Term VT
File Edit Setup Control Window Help
Creating 8 MTD partitions on "physmap-flash.0":
0x00060000-0x00260000 : "kernel"
0x00260000-0x02000000 : "rootfs"
0x00260000-0x00a60000 : "rootfs small"
0x00a60000-0x02000000 : "scrap"
0x00008000-0x00010000 : "u-boot config"
0x00010000-0x00018000 : "ssv config"
0x00000000-0x00008000 : "boot.bin"
0x00020000-0x00060000 : "u-boot"
Initializing USB Mass Storage driver...
usbcore: registered new interface driver usb-storage
USB Mass Storage support registered.
mouse: PS/2 mouse device common for all mice
at91sam9_wdt: Watchdog register already programmed.
TCP cubic registered
NET: Registered protocol family 1
NET: Registered protocol family 17
RPC: Registered udp transport module.
RPC: Registered tcp transport module.
VFS: Mounted root (jffs2 filesystem) readonly.
Freeing init memory: 100K
INIT: version 2.86 booting
Mounting sys filesystem.....done
Mounting /dev ramdisk.....done
Populating /dev.....done
Mounting local filesystems.....done
Setting up IP spoofing protection.....done
Configuring network interfaces.....done
INIT: Entering runlevel: 5
Starting Internet superserver inetd.....done
Starting syslogd/klogd.....done
Starting Lighttpd Web Server.....done

DNP/9265 Linux emblinux ttyAT0
emblinux login: □
```

Please note: *HyperTerminal* for the Microsoft Windows 7 O/S is available. Please visit the web site <http://www.hilgraeve.com/hyperterminal/> for more information.

That's all.