

## How to use PHP with the DNP/9200 Web Server

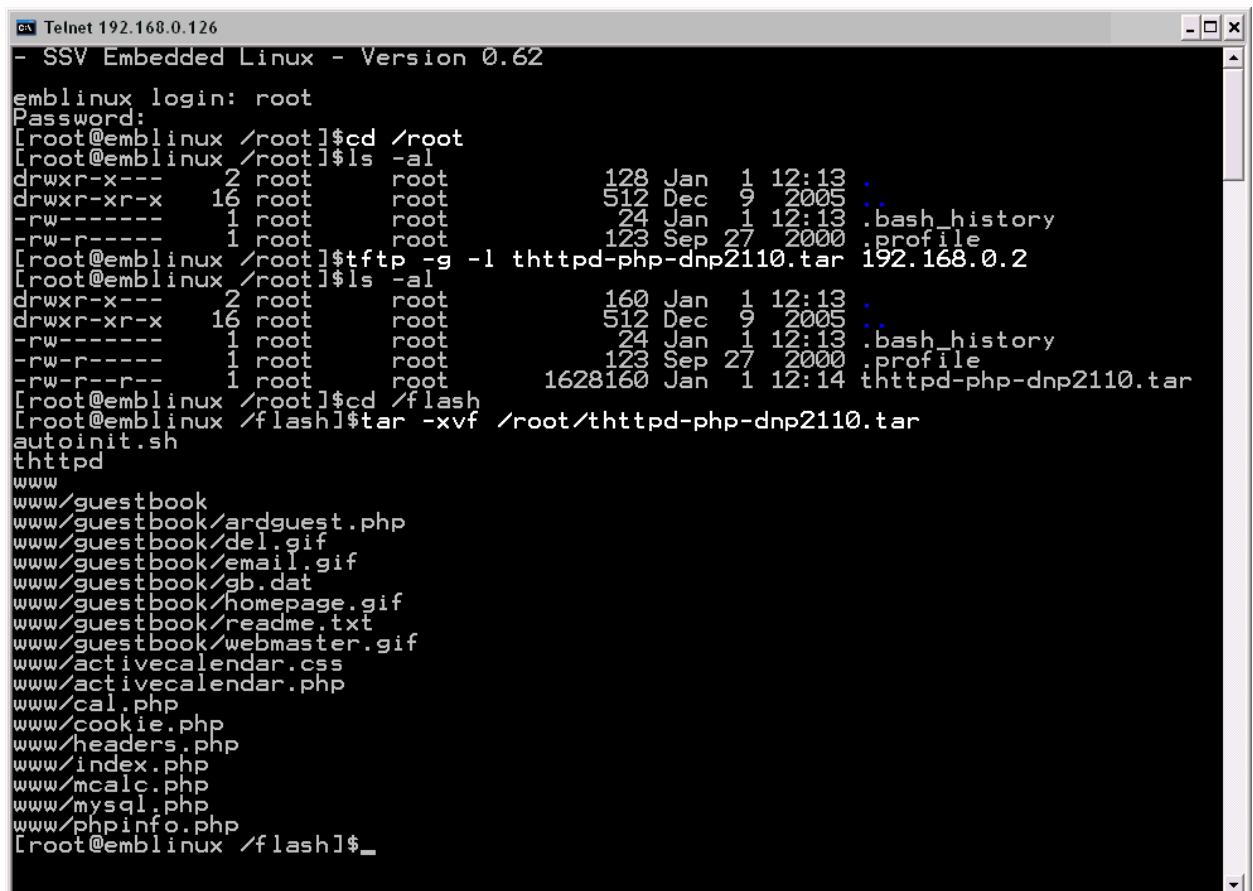
The DIL/NetPC DNP/9200 embedded web server offers a CGI interface. This allows you to write CGI programs in C/C++ and run these programs over a HTTP request. It is also possible to use Linux shell scripts together with the DNP/9200 CGI interface. Over an extension, you can use PHP scripting in addition to C-based CGI and Linux shell scripts.

- **1. Step:** Setup a Telnet-based session. Login as *root* user. Change to DNP/9200 directory *root* and download the tar file *thttpd-php-dnp2110.tar* with FTP or TFTP from your PC to this DNP/9200 directory. The file *thttpd-php-dnp2110.tar* is available over the download area of [www.dilnetpc.com](http://www.dilnetpc.com) or from the DNP/9200 starter kit CD-ROM (version 1.3 or later).

**Please note:** The file *thttpd-php-dnp2110.tar* is usable for the ARM-based DIL/NetPCs DNP/2110 and DNP/9200.

- **2. Step:** Please execute the following two Linux commandos within the DNP/9200-based Telnet session:

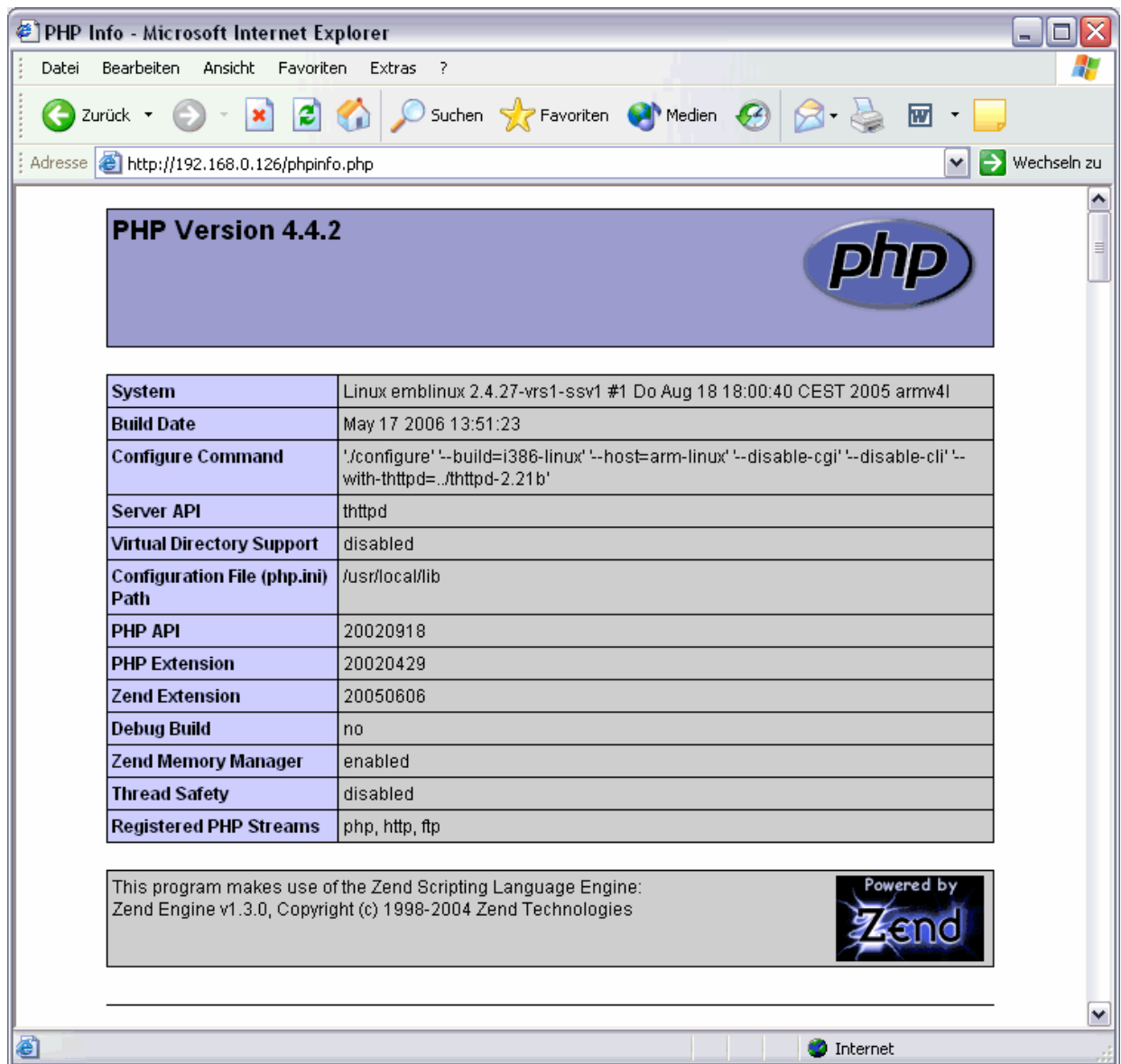
```
cd /flash
tar -xvf /root/thttpd-php-dnp2110.tar
```



```
Telnet 192.168.0.126
- SSV Embedded Linux - Version 0.62
emblinux login: root
Password:
[root@emblinux /root]#cd /root
[root@emblinux /root]#ls -al
drwxr-x---  2 root  root           128 Jan  1 12:13 .
drwxr-xr-x 16 root  root           512 Dec  9 2005 ..
-rw-----  1 root  root            24 Jan  1 12:13 .bash_history
-rw-r-----  1 root  root           123 Sep 27 2000 .profile
[root@emblinux /root]#tftp -g -l thttpd-php-dnp2110.tar 192.168.0.2
[root@emblinux /root]#ls -al
drwxr-x---  2 root  root           160 Jan  1 12:13 .
drwxr-xr-x 16 root  root           512 Dec  9 2005 ..
-rw-----  1 root  root            24 Jan  1 12:13 .bash_history
-rw-r-----  1 root  root           123 Sep 27 2000 .profile
-rw-r--r--  1 root  root        1628160 Jan  1 12:14 thttpd-php-dnp2110.tar
[root@emblinux /root]#cd /flash
[root@emblinux /flash]#tar -xvf /root/thttpd-php-dnp2110.tar
autoinit.sh
thttpd
www
www/guestbook
www/guestbook/ardguest.php
www/guestbook/del.gif
www/guestbook/email.gif
www/guestbook/gb.dat
www/guestbook/homepage.gif
www/guestbook/readme.txt
www/guestbook/webmaster.gif
www/activecalendar.css
www/activecalendar.php
www/cal.php
www/cookie.php
www/headers.php
www/index.php
www/mcalc.php
www/mysql.php
www/phpinfo.php
[root@emblinux /flash]#_
```

- **3. Step:** Reboot the DNP/9200.

- **4. Step:** Run your PC web browser and access the URL <http://192.168.0.126> (192.168.0.126 is the default IP address of the DNP/9200) or <http://192.168.0.126/phpinfo.php>



**Please note:** The steps of this document are tested with the DIL/NetPC DNP/9200 and Linux kernel version 2.4.

That's all.