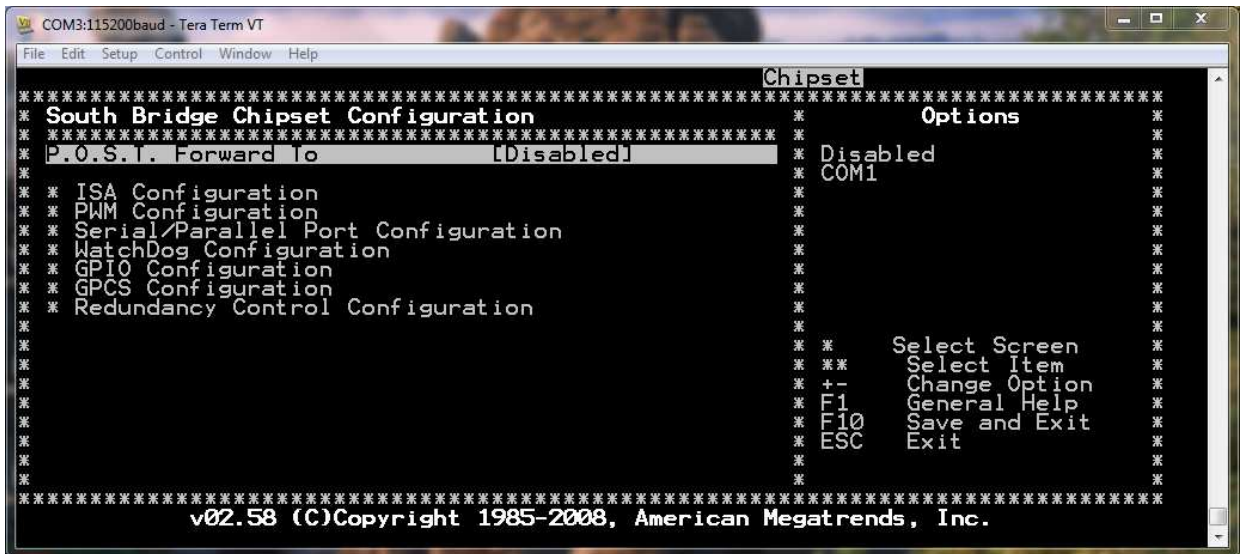


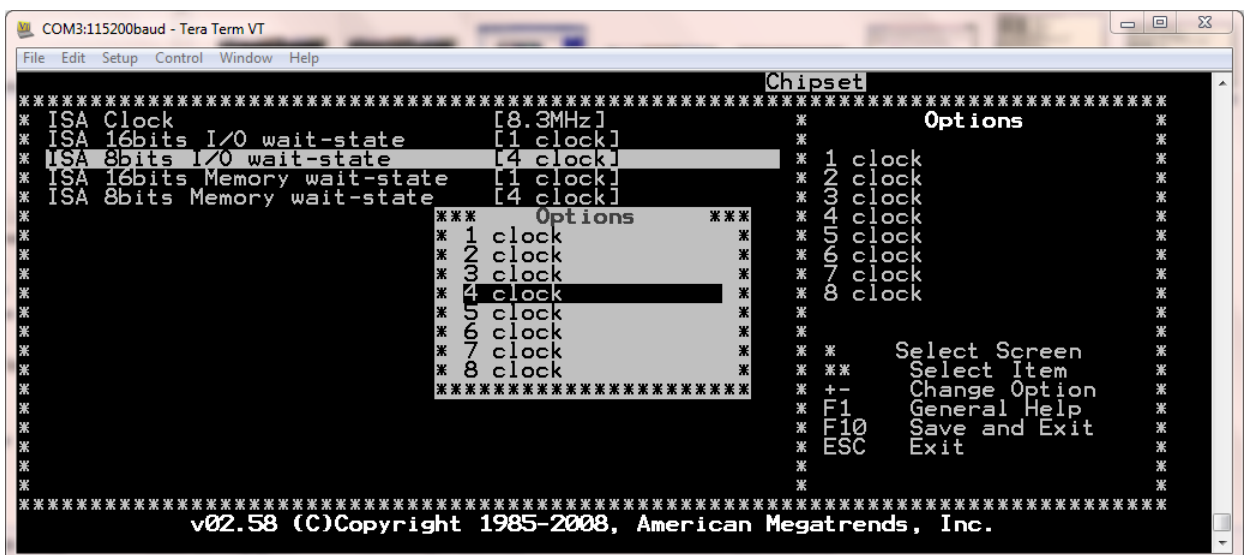
How to change the Expansion Bus timing

The DIL/NetPC DNP/2486 offers a preinstalled BIOS (BIOS I/O System). With these BIOS you can configure some DNP/2486 hardware and software features. To use the DNP/2486 BIOS setup please see the document *mHT2486-20.pdf: How to use the BIOS setup* for more details.

- **1. Step:** In the BIOS setup screen please select the menu item *Chipset*. Within the BIOS chipset configuration screen select the item *SouthBridge Configuration*.



- **2. Step:** Within the SouthBridge configuration screen please select the *ISA configuration*. Then change the *ISA 8bits/16bits I/O wait states* carefully to your needs.



- **3. Step:** Use the ESC key to leave the DNP/2486 BIOS setup. Don't forget to save the new BIOS setup.

That's all.