

## **DIL/NetPC ADNP/1520**

### **Starter Kit**

### **User Manual**

## Content

---

<b>1</b>	<b>INTRODUCTION .....</b>	<b>4</b>
1.1	Conventions used in this Document.....	4
1.2	Checklist .....	4
1.3	Features.....	5
<b>2</b>	<b>BOARD LAYOUT.....</b>	<b>6</b>
<b>3</b>	<b>BOARD COMPONENTS.....</b>	<b>7</b>
3.1	Power Connector .....	7
3.2	Power LED.....	7
3.3	Output LEDs .....	8
3.4	DIP Switches.....	8
3.5	Reset Button.....	8
3.6	Prototype Area .....	8
3.7	RCM Jumper .....	8
3.8	10/100Mbps Ethernet Interface.....	8
3.9	Serial Interface COM1.....	9
3.10	Serial Interface COM2.....	9
3.11	Serial Interface COM3.....	9
3.12	COM3 RS232/485 Mode Switch .....	10
3.12.1	Using COM3 in RS232 Mode .....	10
3.12.2	Using COM3 in RS485 Mode .....	10
<b>4</b>	<b>CONNECTIONS .....</b>	<b>11</b>
4.1	Mounting the ADNP/1520.....	11
4.2	Cable Connections.....	12
4.3	Serial Link.....	13
4.4	Ethernet Link.....	14
4.5	Power Supply .....	15
<b>5</b>	<b>FIRST STEPS.....</b>	<b>16</b>
5.1	Using a Windows–based development System .....	16
5.1.1	Setup the Serial Link.....	16
5.1.2	Checking the Ethernet Link.....	20
5.1.3	Web Server Access .....	21
5.1.4	Installing Linux .....	22
5.1.5	Running Linux.....	24

5.1.6	Login via Serial Console.....	25
5.1.7	Login via Telnet.....	26
5.1.8	File Transfer via FTP.....	27
5.2	Using a Linux–based development System.....	29
5.2.1	Setup the Serial Link.....	29
5.2.2	Checking the Ethernet Link.....	32
5.2.3	Web Server Access.....	33
5.2.4	Installing Linux.....	34
5.2.5	Running Linux.....	36
5.2.6	Login via Serial Console.....	37
5.2.7	Login via Telnet.....	38
5.2.8	File Transfer via FTP.....	39
<b>6</b>	<b>SETTING YOUR OWN IP-ADDRESS WITH LINUX.....</b>	<b>41</b>
6.1	Setting the IP-address under DOS.....	41
6.2	Setting the IP-address under Linux.....	42
<b>7</b>	<b>TROUBLESHOOTING.....</b>	<b>43</b>
<b>8</b>	<b>APPENDIX.....</b>	<b>44</b>
	Appendix 1: Pin Assignment –128-pin QIL Connector (1. Part).....	44
	Appendix 1: Pin Assignment –128-pin QIL Connector (2. Part).....	45
	Appendix 1: Pin Assignment –128-pin QIL Connector (3. Part).....	46
	Appendix 1: Pin Assignment –128-pin QIL Connector (4. Part).....	47
	Appendix 2: Pin Assignment DNP/EVA2-SV4 Components.....	48
	COM1 Connector.....	48
	COM2 Connector.....	48
	COM3 Connector (RS232/RS485).....	48
	COM3 RS232/485 Switch.....	49
	10/100 Mbps Ethernet Connector.....	49
	Power Connector.....	49
	RCM Jumper.....	49
	Appendix 3: Using the Chip-Selects.....	50
	Appendix 4: Connecting an external battery to the ADNP/1520.....	52
	Appendix 5: Mechanical Dimensions.....	53
	Appendix 6: GNU General Public License.....	54
	Appendix 7: GNU Lesser General Public License.....	59
	List of Figures.....	67
	List of Tables.....	68
	List of Appendixes.....	69
	Contact.....	70
	Document History.....	70

# 1 Introduction

---

Thank you for choosing an SSV Starter Kit. We are confident that you will be pleased with the performance of your product. Please take a few minutes to read this manual. It describes how to start with the DNP/SK10 Starter Kit and will help you to get out the most of your new system.

For further information about the individual components of this Starter Kit you may follow the links from our website at: <http://www.dilnetpc.com>

Our Website contains a lot of technical information, which will be updated in regular periods.

For specific technical information – like hardware description etc. – please check out the Starter Kit CD-ROM, which is an important part of every Starter Kit.

## 1.1 Conventions used in this Document

---

Convention	Usage
<i>italic</i>	Filenames, as well as Internet addresses such as <a href="http://www.ssv-embedded.de">www.ssv-embedded.de</a>
<i>italic</i>	User inputs, command lines and pathnames
<b>bold</b>	New terms
monospace text	Program code

**Table 1-1: Convention usage**

## 1.2 Checklist

---

Compare the contents of your Starter Kit package with the standard checklist below. If any item is missing or appears to be damaged, please contact SSV Embedded Systems.

### Standard Items

- Evaluation Board DNP/EVA2-SV4
- DIL/NetPC ADNP/1520
- Null-Modem cable
- Power Supply
- Power Cable
- User Manual
- Support CD-ROM

## 1.3 Features

---

### **Evaluation Board DNP/EVA2-SV4**

- 128-pin QIL socket for one DIL/NetPC ADNP/1520
- Three Serial Interfaces, 2x RS232, 1x RS232/485
- 10/100Mbps Ethernet Interface
- Eight User-Definable LEDs
- Eight Manual DIP Switches
- One Reset Switch
- Prototype-Area
- 5 VDC Power Input Connector
- Size 140 x 120 mm

### **DIL/NetPC ADNP/1520**

- AMD SC520 CPU with 133 MHz Clock Speed and FPU
- 32/64 MByte SDRAM Memory
- 16 MByte FLASH Memory
- 10/100Mbps Ethernet Interface
- Real Time Clock
- IDE Support
- Two 16C550 UART Serial Ports
- 20-bit General Purpose High-Speed Parallel I/O
- 7 Interrupt Inputs, 4 Chip Select Outputs
- In-System Programming Features
- 128-pin QIL-Connector
- 3.3 Volt Low Power Design, Single 3.3 VDC Supply
- Size 82 x 36 mm

## 2 Board Layout

The main component of the Starter Kit is the Evaluation Board DNP/EVA2-SV4. On this board you will find a 128-pin QIL socket (QIL = Quad In Line) to mount your ADNP/1520.

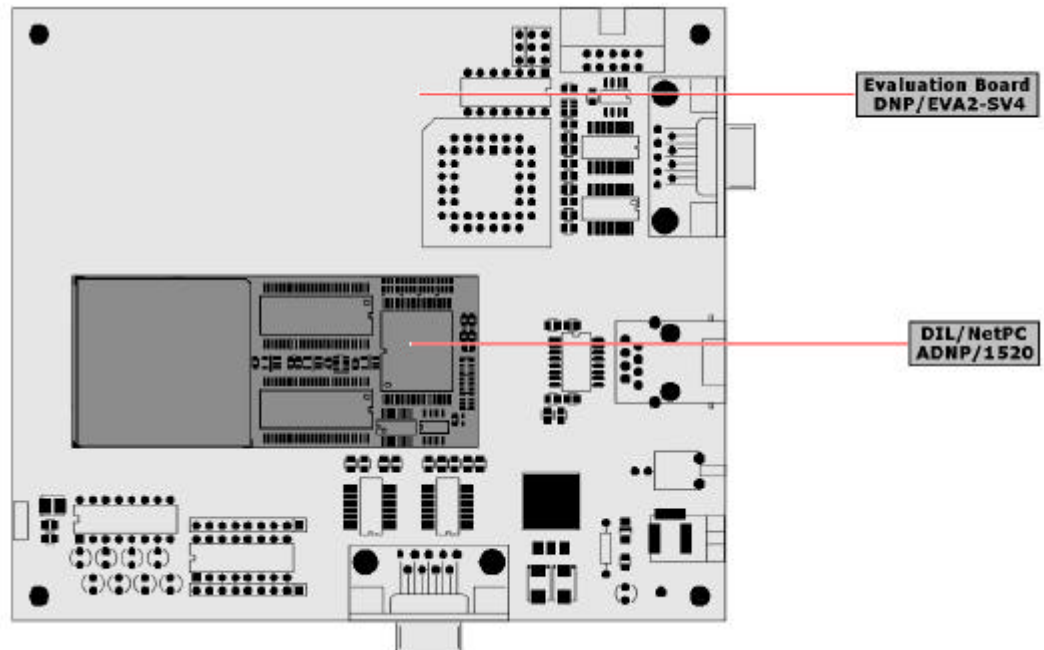


Figure 2-1: Evaluation Board EVA2 with ADNP/1520

The Starter Kit DNP/SK10 provides all required basic hard- and software environment, which allows you the development of individual applications for your ADNP/1520. For an instant connection to your hardware the Evaluation Board supports a serial COM interface, a 10/100Mbps Ethernet interface as well as a QIL-128 interface. Further you will find a prototype (wire-wrap) area, eight LEDs, DIP-switches and one reset switch, which allows you to test your peripheral applications very easy. With the prototype area you have an good place to install and to test your own applications on the Evaluation Board.

## 3 Board Components

This chapter describes the most interesting components of the Evaluation Board DNP/EVA2-SV4 and gives a short overview about their respective functions.

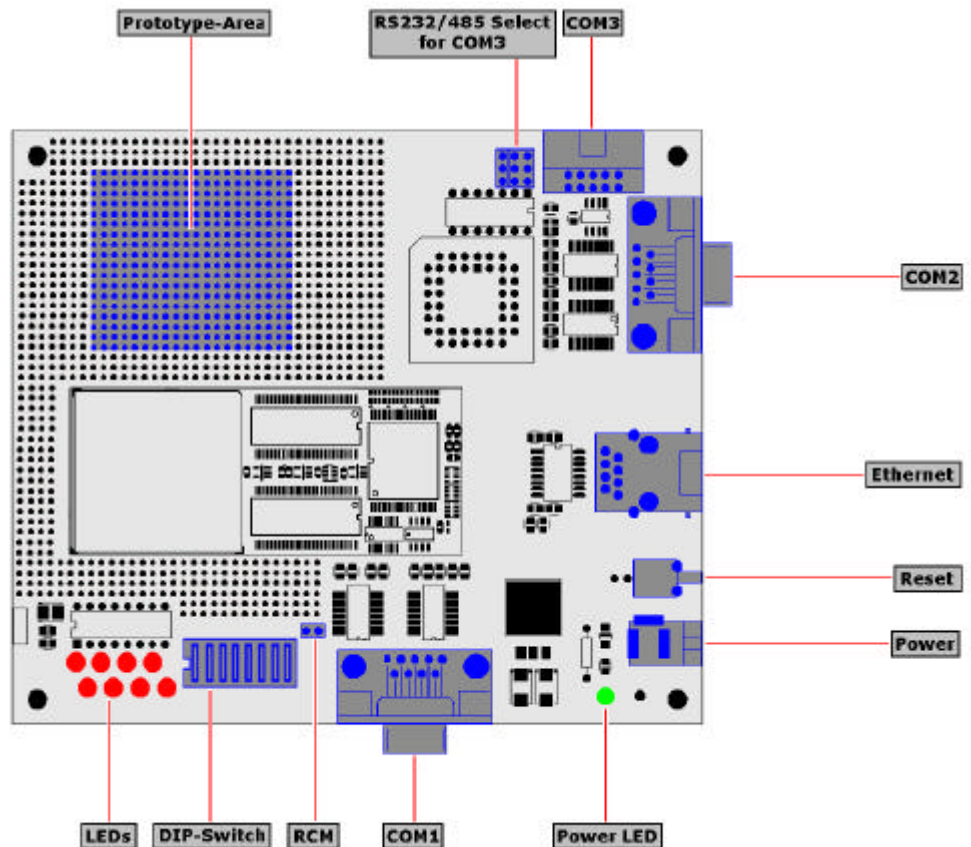


Figure 3-1: Main components of the Evaluation Board DNP/EVA2-SV4

The Evaluation Board offers a single 128-pin QIL socket (QIL = Quad-In-Line). This socket picks up your ADNP/1520 and builds the interface to the individual parts on the Evaluation Board.

### 3.1 Power Connector

The Power connector onto the Evaluation Board has to be connected with the power supply, which is added to your Starter Kit. Alternatively you are able to use a similar power supply that provides +5V DC<sup>±</sup> 10% and about 2A current.

### 3.2 Power LED

The Evaluation Board DNP/EVA2-SV4 is equipped with a single green LED. This LED will light up when the board is provided with the necessary operating voltage.

---

### 3.3 Output LEDs

---

The Evaluation Board provides eight red LEDs for testing purposes. These LEDs are the first little application for the PIO-Ports. The LEDs will flicker or light up to indicate traffic on the output ports PA0–PA7.

---

### 3.4 DIP Switches

---

The Evaluation Board has a set of eight DIP-switches. The DIP-switches give you the possibility to put 8-bit binary numbers to the input ports PB0–PB7. The DIP-switches are the second little application for the PIO ports.

Switch open = Signal Vin Low (GND)  
Switch closed = Signal Vin High (Vcc)

---

### 3.5 Reset Button

---

Next to the Power connector you find the Reset button. Press it down if the system hang or you need to restart it. Pressing the Reset button will only restart the ADNP/1520. To reset any connected devices please turn off the complete power from the system.

---

### 3.6 Prototype Area

---

The Prototype Area offers space to develop your own applications and circuits on the Evaluation Board.

---

### 3.7 RCM Jumper

---

Use this jumper to activate the RCM mode of the ADNP/1520. To activate the RCM mode place a jumper cap on both pins of the RCM jumper, so that it is short. If you remove the jumper cap, or place the jumper cap on just one pin, the jumper is open and you are not able to use the RCM mode. When closed, you will see some boot messages on the serial port COM1. If the RCM jumper is not set, these messages will be blocked by the system. Please see Appendix 2 - RCM Jumper for more information.

---

### 3.8 10/100Mbps Ethernet Interface

---

The ADNP/1520 is using a SMSC LAN91C111-NE chip that allows Ethernet connectivity with a speed up to 100Mbps. The RJ45 Ethernet interface on the Evaluation Board is just a simple connection over a transformer to the QIL interface pins, which are connected to the LAN controller onto the ADNP/1520.



### **3.9 Serial Interface COM1**

---

For an easy connection between the Starter Kit and your development system you can use the serial interface COM1. The COM1 interface is realized as a RS232 standard compliant Sub-D port with 9 pins. The exact layout of the COM1 interface is shown in Appendix 2 - COM1 Connector.

### **3.10 Serial Interface COM2**

---

The COM2 interface is realized as a RS232 standard compliant Sub-D port with 9 pins. The exact layout of this interface is shown in Appendix 2 - COM2 Connector.

The COM2 interface uses the dual UART, which is connected to the ADNP/1520. This UART can only be used in addition to a specific BIOS version that you can find on the Starterkit-CD. On default the UART will not be initialized.

### **3.11 Serial Interface COM3**

---

The COM3 interface is realized as a RS232 standard compliant 10-pin boxed header. The exact layout of the COM3 interface is shown in Appendix 2 - COM3 Connector.

This interface can be used also as a serial interface with RS485 signal level. To switch between the modes use the jumper block JP1/JP2. In RS485 mode only the pins 3 and 5 are active. The other pins have no function while running this mode. Please don't close this jumper in RS485 mode.

## 3.12 COM3 RS232/485 Mode Switch

---

Use this jumper to select the data mode of the COM3 interface. For the COM3 interface it is possible to use the RS232 mode or the RS485 mode. The RS485 mode uses the same pins like the RS232 mode. For further information please see Appendix 2 - COM3 RS232/485 Switch.

### 3.12.1 Using COM3 in RS232 Mode

---

To use the COM3 port in RS232 mode, please set the Jumper JP1 on position 1–2 and the jumper JP2 on the positions 1–3 and 2–4 to select the RS232 data mode. The table below show you these settings.

JP1	JP2	
1	1	2
2	3	4
3	5	6

Table 3-1: Jumper Settings to use COM3 in RS232 mode

### 3.12.2 Using COM3 in RS485 Mode

---

To use the COM3 port in RS485 mode, please set the Jumpers JP1 on position 2–3 and the jumpers on JP2 on the positions 3–5 and 4–6 to select the RS485 data mode.

JP1	JP2	
1	1	2
2	3	4
3	5	6

Table 3-2: Jumper Settings to use COM3 in RS485 mode

## 4 Connections

For a quick and easy start with the DNP/SK10 Starter Kit there are several connections necessary. The following chapter describes, how and between which components these connections have to be made.

### 4.1 Mounting the ADNP/1520

To mount the ADNP/1520 on the Evaluation Board DNP/EVA2-SV4 identify the pin-1 corner on the socket and the pin-1 corner on the ADNP/1520. On the ADNP/1520 a white sign marks the pin-1 corner. Matching the pin-1 corners, drop the ADNP/1520 down into the socket. There is only a little bit force required and the ADNP/1520 should seat easily into the socket. This locks the ADNP/1520 in place.

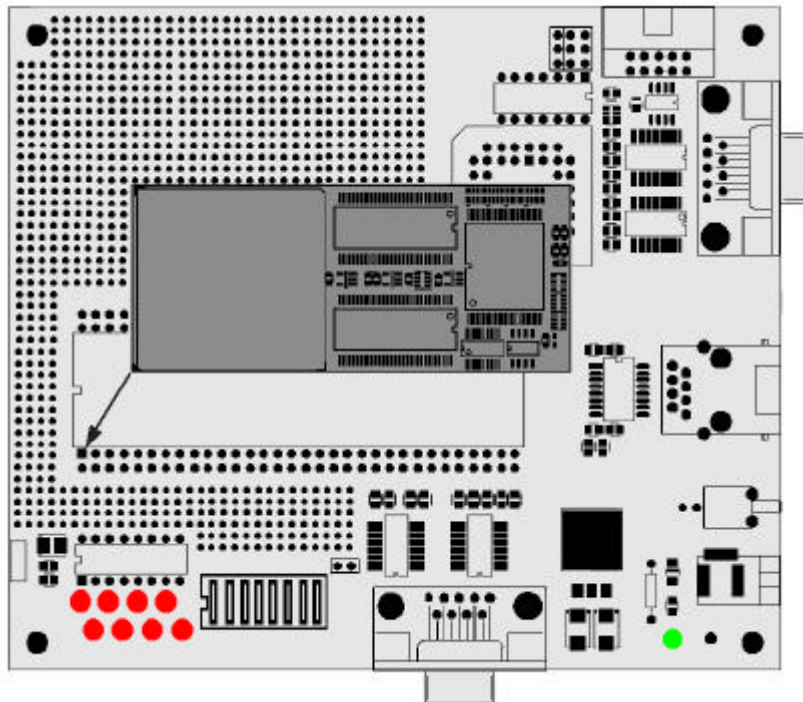


Figure 4-1: Position of the ADNP/1520 on the Evaluation Board

## 4.2 Cable Connections

Before you can use your DIL/NetPC Starter Kit you need a further Desktop- or Notebook-PC, which acts as development system. This development system should run under MS-Windows or Linux in an ideal manner. Between the development system and the Starter Kit are two connections required. At first the **RS232 Serial Link** and at second the **Ethernet Link**. The PC will act as development system and as **Remote Console Monitor (RCM)** for the ADNP/1520 on the Evaluation Board.

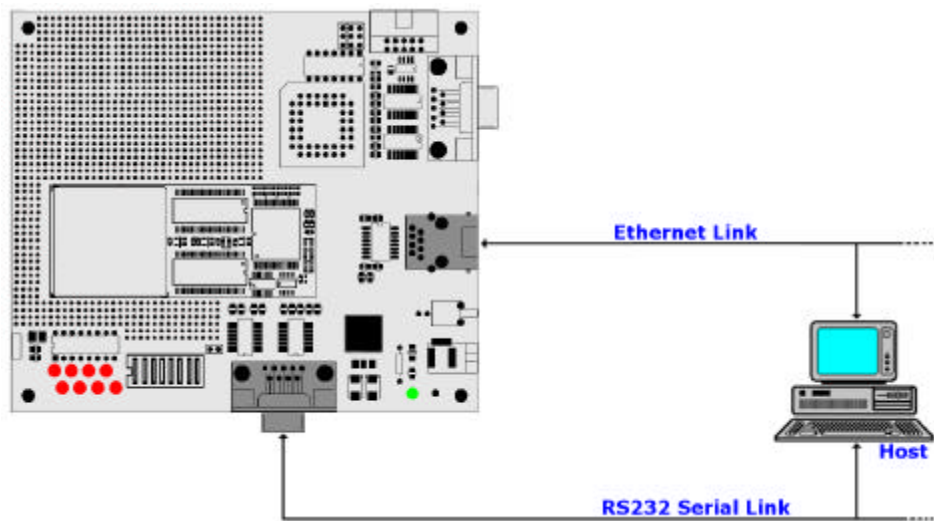


Figure 4-2: Overview about the required cable Connections

### 4.3 Serial Link

For the Serial Link, you need a Null-Modem cable. This cable comes along with your Starter Kit. Please connect the Evaluation Board with the COM1 port of your development system by using this cable.

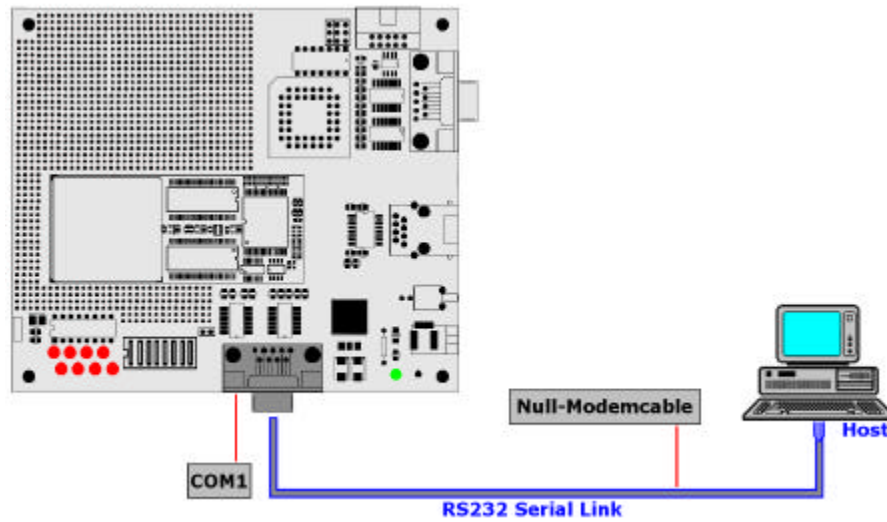


Figure 4-3: Serial Link Connection

## 4.4 Ethernet Link

The Ethernet Link can be made on two ways. First, with a crossover cable and second, with two standard 10Base-T patch cables and a Hub or Switch. In both cases an Ethernet-LAN interface for your development system is required. If you use a Hub or Switch please connect them between your development system and the ADNP/1520 like shown in the figure below.

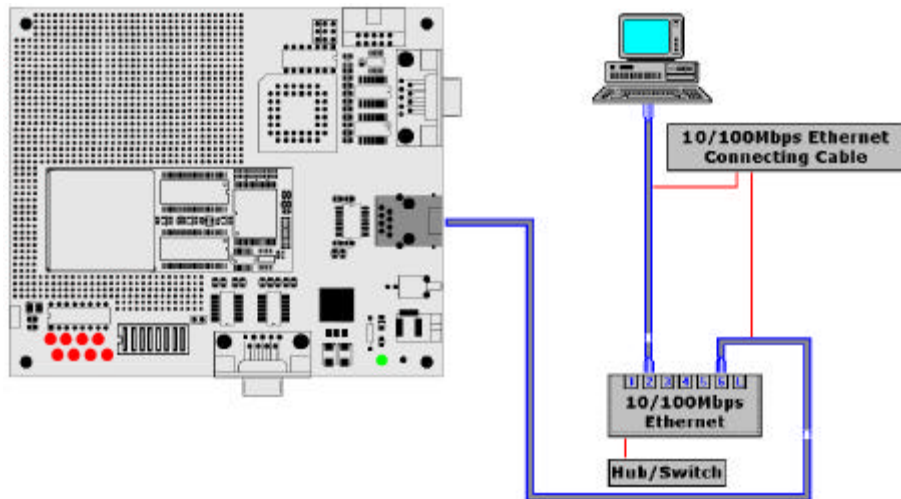


Figure 4-4: Ethernet Link Connection using a Hub/Switch

If you want to connect your development system directly to the ADNP/1520, place a crossover cable between this two components like shown in the next figure.

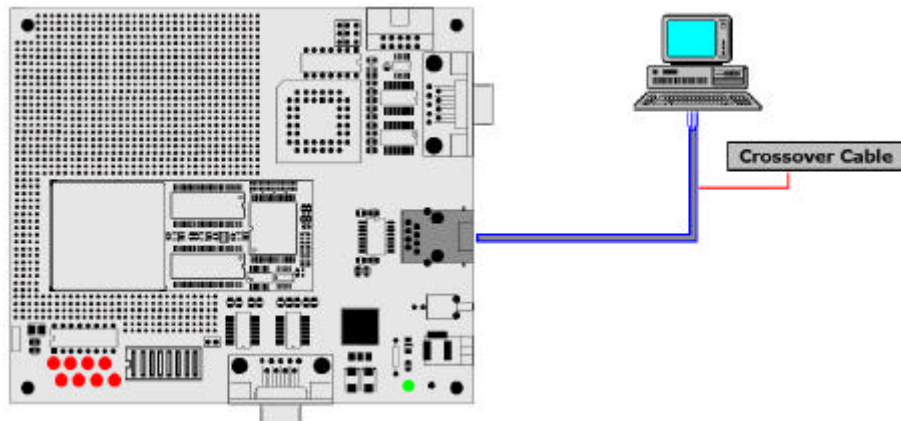


Figure 4-5: Ethernet Link Connection using a crossover cable

## 4.5 Power Supply

The ADNP/1520 Starter Kit needs a supply voltage of 5VDC to work. In your Starter Kit package you will find a plug-in power supply unit to provide the system with the necessary power. After the connection of all cables the Starter Kit is ready to run.

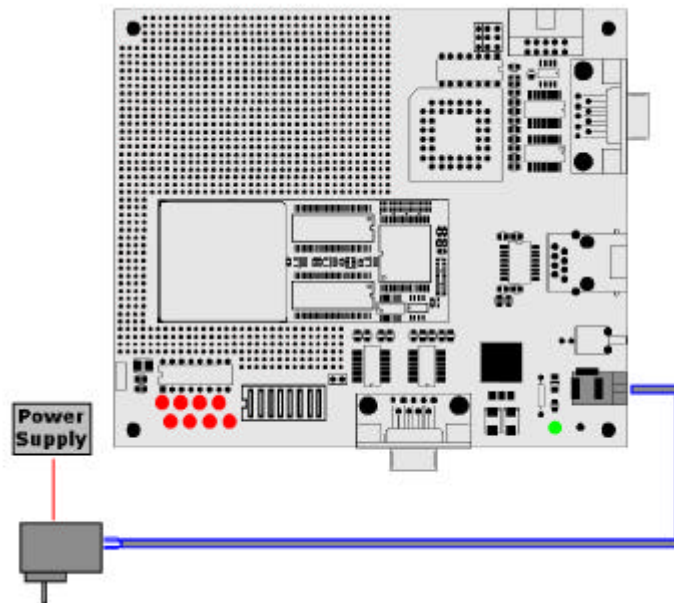


Figure 4-6: Power supply Connection

**Caution:** Providing the Evaluation Board with a voltage higher than the regular 5V DC  $\pm$  10% could resolve in damaged board components.

## 5 First Steps

You can use the ADNP/1520 Starter Kit from your development system. This development system may run under different operating systems. The first steps for getting started we describe exemplarily by the two most popular operating systems – MS-Windows and Linux.

### 5.1 Using a Windows-based development System

The following paragraphs will help you to use the ADNP/1520 with a development system running under MS-Windows. For these steps some programs are necessary, which normally come along with every MS-Windows installation (e.g. HyperTerminal). Please make sure that these programs are present on your development system. If these programs are not installed at your development system – you have to install these programs manually from your MS-Windows installation CD-ROM.

#### 5.1.1 Setup the Serial Link

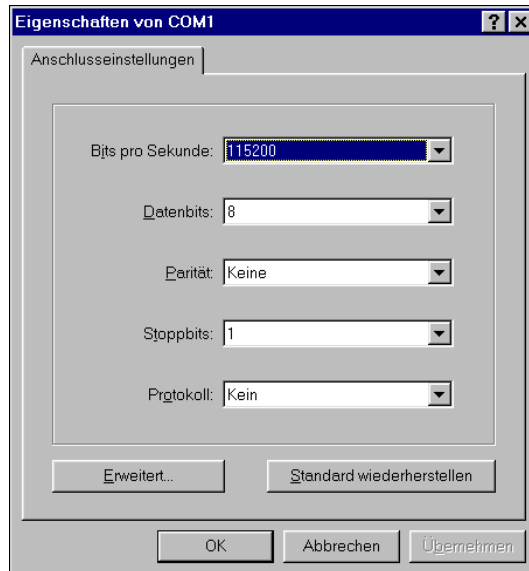
Before you provide the Evaluation Board with power for the first time, please run a terminal program – for example Windows HyperTerminal – that offers communication capabilities on your development system. In the following you will see the necessary settings for HyperTerminal under Windows. Select the "direct link cable connection via COM1" interface in the property sheet and choose "Configure".



Figure 5-1: Interface property Sheet



Now you can change some configuration parameters – such as the maximum baud rate – on a further property sheet. Select the value "115.200" in the "Bits per Second" field and close the property sheet by clicking the "OK" button, as shown in figure 10.

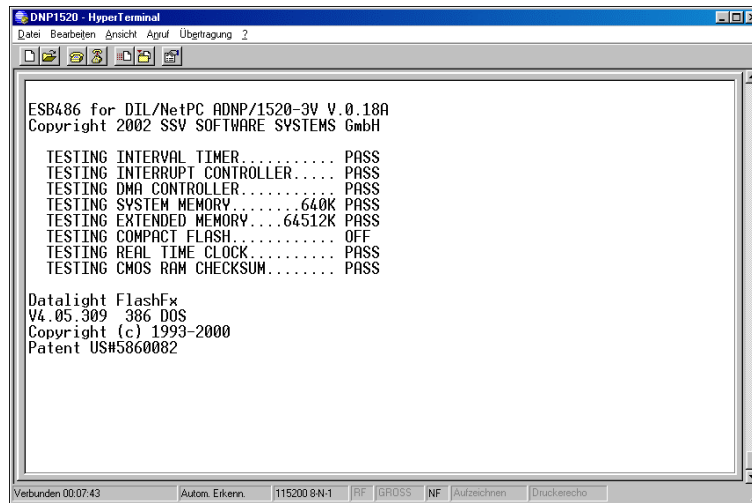


**Figure 5-2: Baud rate Settings**

All these settings can also be used for other terminal programs. The following parameters are important to use:

- Connection Speed 115.200 bps (Bits per Second)
- 8 Data bits
- No Parity bit
- 1 Stop bit
- No Protocol (Xon/Xoff, RTS/CTS or similar).

Now turn on the power for the Evaluation Board and you will see all steps of the ADNP/1520 boot process in the terminal program window at your PC.



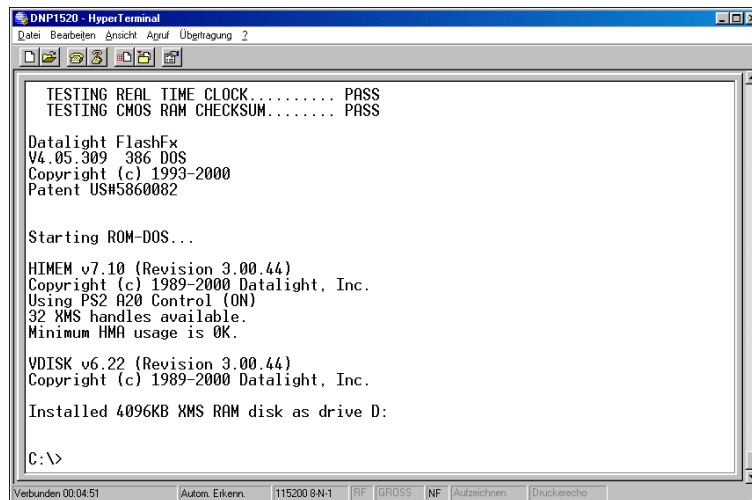
```
ESB486 for DIL/NetPC ADNP/1520-3V V.0.18A
Copyright 2002 SSV SOFTWARE SYSTEMS GmbH

TESTING INTERVAL TIMER..... PASS
TESTING INTERRUPT CONTROLLER..... PASS
TESTING DMA CONTROLLER..... PASS
TESTING SYSTEM MEMORY..... 640K PASS
TESTING EXTENDED MEMORY..... 64512K PASS
TESTING COMPACT FLASH..... OFF
TESTING REAL TIME CLOCK..... PASS
TESTING CMOS RAM CHECKSUM..... PASS

Datalight FlashFx
V4.05.309 386 DOS
Copyright (c) 1993-2000
Patent US#5860082
```

Figure 5-3: ROM-DOS boot process

After the self test sequence is done the ROM-DOS boot process will be initialized. When finished, you will see the following screen with a ROM-DOS prompt which is waiting for a user input.



```
Starting ROM-DOS...

HIMEM v7.10 (Revision 3.00.44)
Copyright (c) 1989-2000 Datalight, Inc.
Using PS2 A20 Control (ON)
32 XMS handles available.
Minimum HMA usage is OK.

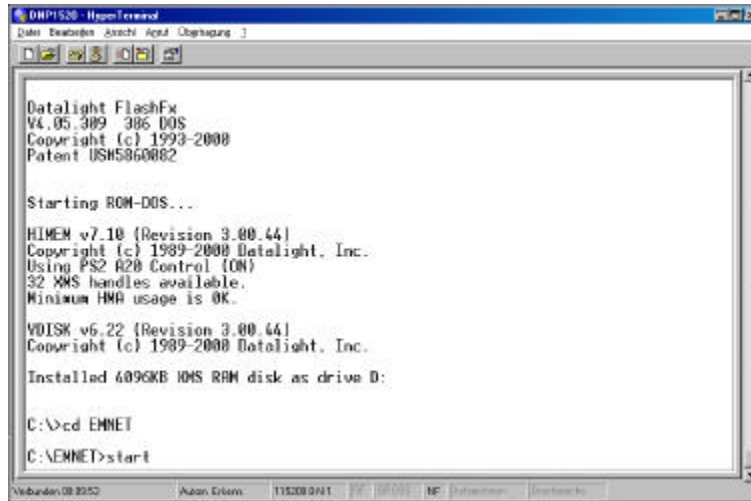
VDISK v6.22 (Revision 3.00.44)
Copyright (c) 1989-2000 Datalight, Inc.

Installed 4096KB XMS RAM disk as drive D:

C:\>
```

Figure 5-4: ROM-DOS command prompt

Now please enter `cd emnet` to change into the directory EMNET. Then type in `start` to run the Web server inside the ADNP/1520.



```
Datalight FlashFy
V4.05 389 386 DOS
Copyright (c) 1993-2000
Patent US5860062

Starting ROM-DOS...

HIMEM v7.10 (Revision 3.00.44)
Copyright (c) 1989-2000 Datalight, Inc.
Using PS2 A20 Control (ON)
32 MMS handles available.
Minimum HMA usage is 0K.

VDISK v6.22 (Revision 3.00.44)
Copyright (c) 1989-2000 Datalight, Inc.

Installed 6096KB RMS RAM disk as drive D:

C:\>cd EMNET
C:\EMNET>start
```

**Figure 5-5: Starting the Web server**

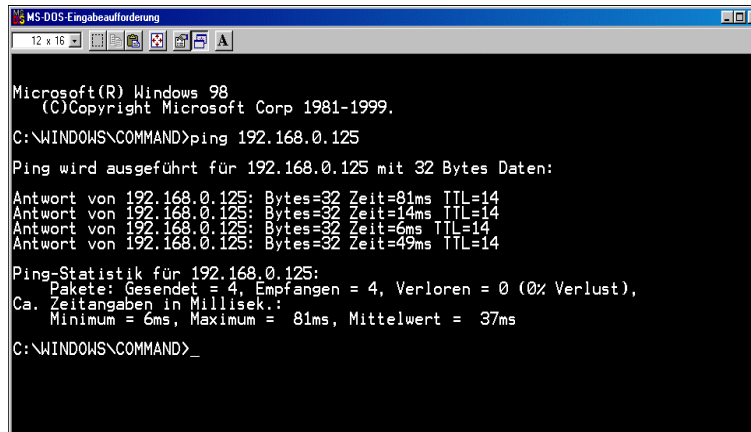
**Note:** For a first test of the ADNP/1520 you have to change the assigned IP-address of your development system to **192.168.0.1**.

To change the IP-address under MS-Windows just click "Start→Settings→Control Panel→Network→TCP/IP" and enter the new IP-address. Please make sure, that you don't use another IP-address – this will lead to different network problems.

## 5.1.2 Checking the Ethernet Link

To test the TCP/IP-communication we use PING a very popular TCP/IP-utility program. Please open a DOS window (you can find it in the Windows Start menu) and enter:

*ping 192.168.0.125*

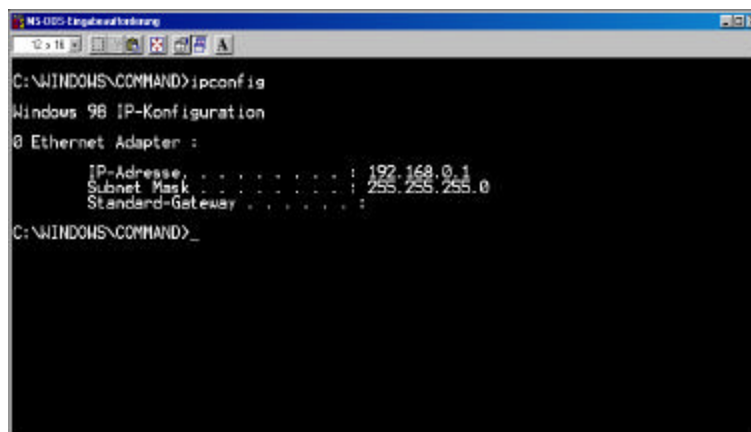


```
Microsoft(R) Windows 98
(C)Copyright Microsoft Corp 1981-1999.
C:\WINDOWS\COMMAND>ping 192.168.0.125
Ping wird ausgeführt für 192.168.0.125 mit 32 Bytes Daten:
Antwort von 192.168.0.125: Bytes=32 Zeit=81ms TTL=14
Antwort von 192.168.0.125: Bytes=32 Zeit=14ms TTL=14
Antwort von 192.168.0.125: Bytes=32 Zeit=6ms TTL=14
Antwort von 192.168.0.125: Bytes=32 Zeit=49ms TTL=14
Ping-Statistik für 192.168.0.125:
    Pakete: Gesendet = 4, Empfangen = 4, Verloren = 0 (0% Verlust),
    Ca. Zeitangaben in Millisek.:
        Minimum = 6ms, Maximum = 81ms, Mittelwert = 37ms
C:\WINDOWS\COMMAND>_
```

Figure 5-6: Communication check via PING

The Starter Kit must answer this ping. Otherwise an error will occur. In this case you have to check all parts of your LAN-connection, including the IP-address of the development system. Then you should find out if the IP-address is set correctly to the value "192.168.0.1". For an easy check of the IP-address, you can use the following DOS-command:

*ipconfig*



```
C:\WINDOWS\COMMAND>ipconfig
Windows 98 IP-Konfiguration
0 Ethernet Adapter :
    IP-Adresse . . . . . : 192.168.0.1
    Subnet Mask . . . . . : 255.255.255.0
    Standard-Gateway . . . . . :
C:\WINDOWS\COMMAND>_
```

Figure 5-7: Communication check via ipconfig command

Once the ping was successful, you are ready to start a Web browser on your development PC. This browser may be the Microsoft Internet Explorer or another suitable Web browser like the Netscape Communicator or Opera or similar.

### 5.1.3 Web Server Access

Start a Web browser like the Microsoft Internet Explorer or similar and open the URL <http://192.168.0.125/index.htm>. The Embedded Web Server will deliver you a small description about ADNP/1520. That's it. Now you are online with the Starter Kit and your Web browser is connected to the Embedded Web Server of the ADNP/1520. It shows you a static web page with some pictures.

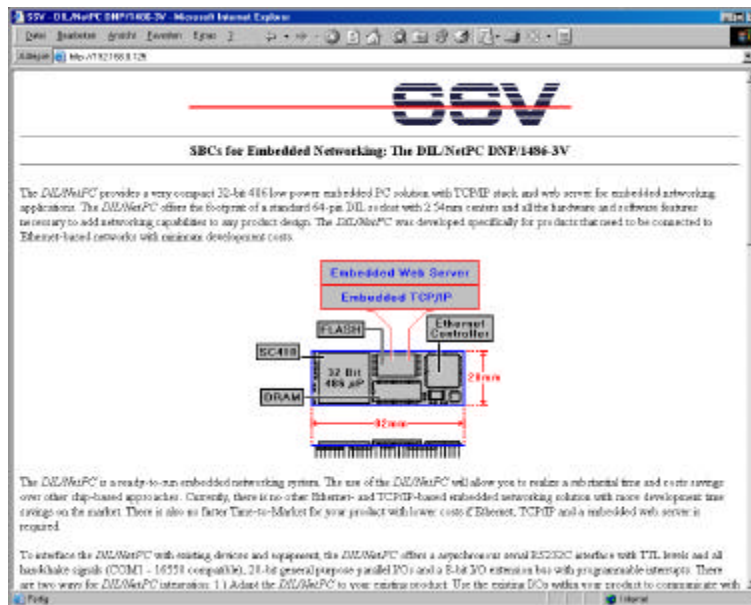


Figure 5-8: Web page shown by the MS-Internet Explorer

If your Web browser can't establish a connection to the Web Server – but the Ping was successful – you should check your browser settings. Please ensure, that your browser is joined with TCP/IP by using the Ethernet card in your development system. Alternatively you have to install a suitable Web browser.

In some cases the Web browser is only configured for modem based Internet access. In this case, please install a second Web browser from your original operating system CD-ROM.

## 5.1.4 Installing Linux

Now you have to transfer some files from your Starterkit-CD-ROM to the ADNP/1520. At first please restart the ADNP/1520 by pressing the reset button to switch into the default configuration. Then open a HyperTerminal session and type in `mkdir linux` to create a directory called LINUX. Type in `cd linux` to switch into this new directory. Now please type in the command `rb` and confirm this input with pressing **Enter**. The system turns into a wait state and shows this with sending the letter C to the screen.

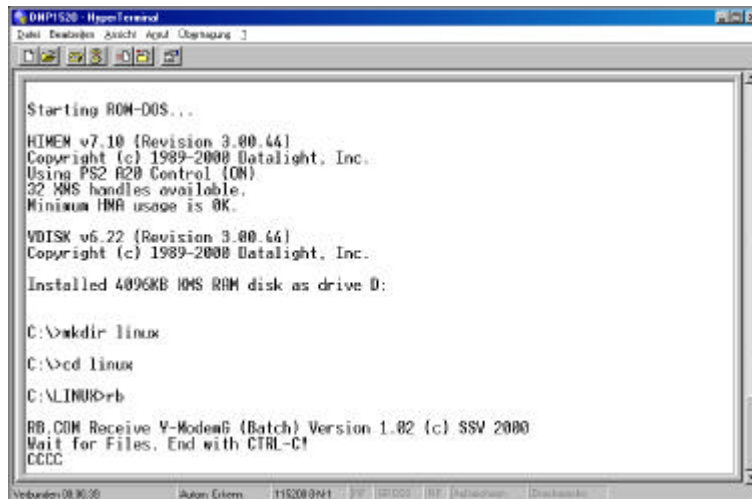


Figure 5-9: Transferring data to the ADNP/1520

At next select the "Transfer→Send File" item in your HyperTerminal control bar.

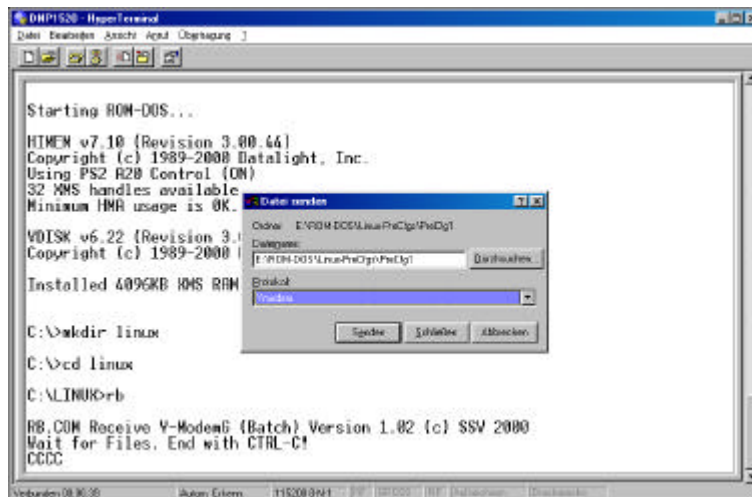
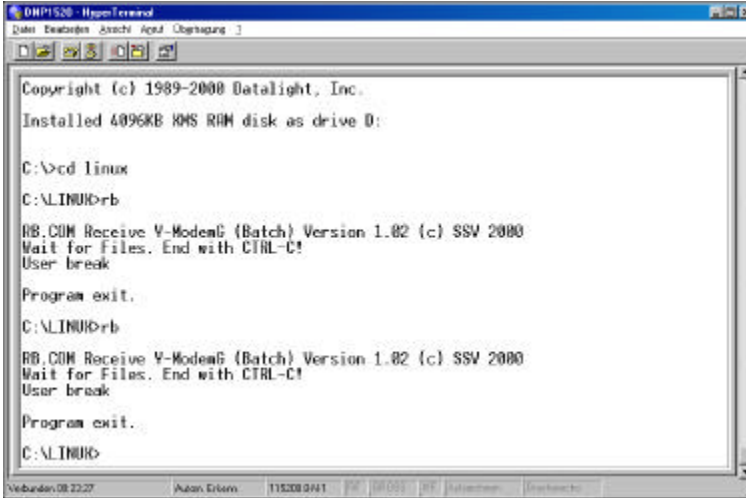


Figure 5-10: Selecting files and transfer protocol

With the help of the "Browse" button you can select the files you need to transfer to the ADNP/1520. In the directory "PreCfg1" you find four files.

LOADLIN.EXE	Bootloader
RIMAGE.GZ	Kernel
START.BAT	Batch File
ZIMAGE	Root Filesystem Image

Please make sure that you have transferred all these files to your ADNP/1520. When all files are transmitted leave this mode by pressing **Esc** on your keyboard.



```
DNP1520 - HyperTerminal
Datei Bearbeiten Ansicht Hilfe
Copyright (c) 1989-2000 Datalight, Inc.
Installed 4096KB RMS RHM disk as drive D:

C:\>cd linux
C:\Linux>rb
RB.COM Receive V-ModemG (Batch) Version 1.02 (c) SSV 2000
Wait for Files. End with CTRL-C!
User break

Program exit.

C:\Linux>rb
RB.COM Receive V-ModemG (Batch) Version 1.02 (c) SSV 2000
Wait for Files. End with CTRL-C!
User break

Program exit.

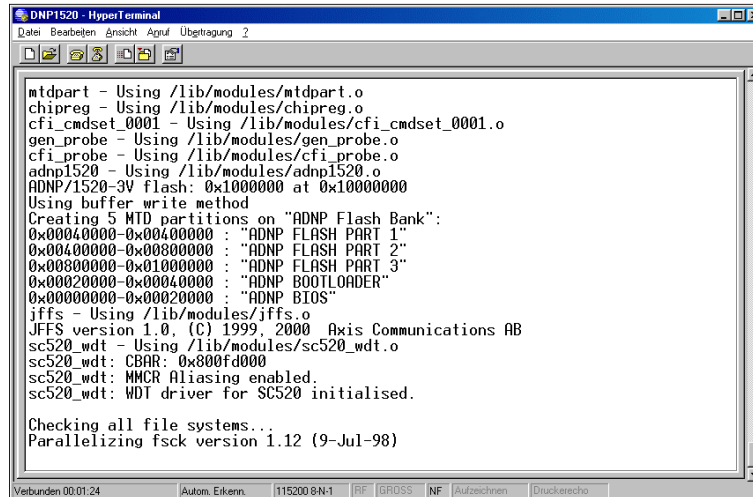
C:\Linux>
```

**Figure 5-11: Leaving the rb mode**

To check out, that all four files are present in the expected directory named LINUX you can type in the command **dir**. This shows you the files inside the respective directory.

## 5.1.5 Running Linux

When all necessary files are placed on the ADNP/1520 you are ready to start Embedded Linux. For this, please type in the command *start* and confirm this input with pressing *Enter*. After some boot messages you will see the following screen.



```

ADNP1520 - HyperTerminal
Datei Bearbeiten Ansicht Eingabe Übertragung 2

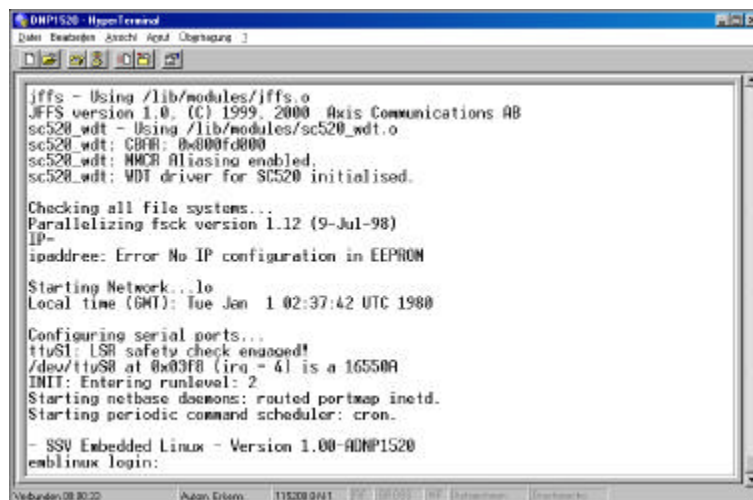
mtdpart - Using /lib/modules/mtdpart.o
chipreg - Using /lib/modules/chipreg.o
cfi_cmdset_0001 - Using /lib/modules/cfi_cmdset_0001.o
gen_probe - Using /lib/modules/gen_probe.o
cfi_probe - Using /lib/modules/cfi_probe.o
adnp1520 - Using /lib/modules/adnp1520.o
ADNP/1520-3V flash: 0x1000000 at 0x10000000
Using buffer write method
Creating 5 MTD partitions on "ADNP Flash Bank":
0x00040000-0x00400000 : "ADNP FLASH PART 1"
0x00400000-0x00800000 : "ADNP FLASH PART 2"
0x00800000-0x01000000 : "ADNP FLASH PART 3"
0x00020000-0x00040000 : "ADNP BOOTLOADER"
0x00000000-0x00020000 : "ADNP BIOS"
jffs - Using /lib/modules/jffs.o
JFFS version 1.0, (C) 1999, 2000 Axis Communications AB
sc520_wdt - Using /lib/modules/sc520_wdt.o
sc520_wdt: CBAR: 0x800fd000
sc520_wdt: MMIO Aliasing enabled.
sc520_wdt: WDT driver for SC520 initialised.

Checking all file systems...
Parallelizing fsck version 1.12 (9-Jul-98)

```

Figure 5-12: Starting Linux

When the Linux boot process is done the system will stop with the following login prompt.



```

ADNP1520 - HyperTerminal
Datei Bearbeiten Ansicht Eingabe Übertragung 3

jffs - Using /lib/modules/jffs.o
JFFS version 1.0, (C) 1999, 2000 Axis Communications AB
sc520_wdt - Using /lib/modules/sc520_wdt.o
sc520_wdt: CBAR: 0x800fd000
sc520_wdt: MMIO Aliasing enabled.
sc520_wdt: WDT driver for SC520 initialised.

Checking all file systems...
Parallelizing fsck version 1.12 (9-Jul-98)
IP=
ipaddress: Error No IP configuration in EEPROM

Starting Network...lo
Local time (GMT): Tue Jan 1 02:37:42 UTC 1980

Configuring serial ports...
ttyS1: LSR safety check engaged!
/dev/ttyS8 at 0x03f8 (irq = 4) is a 16550A
INIT: Entering runlevel: 2
Starting netbase daemons: routed portmap inetd.
Starting periodic command scheduler: cron.

- SSV Embedded Linux - Version 1.00-ADNP1520
emlinux login:

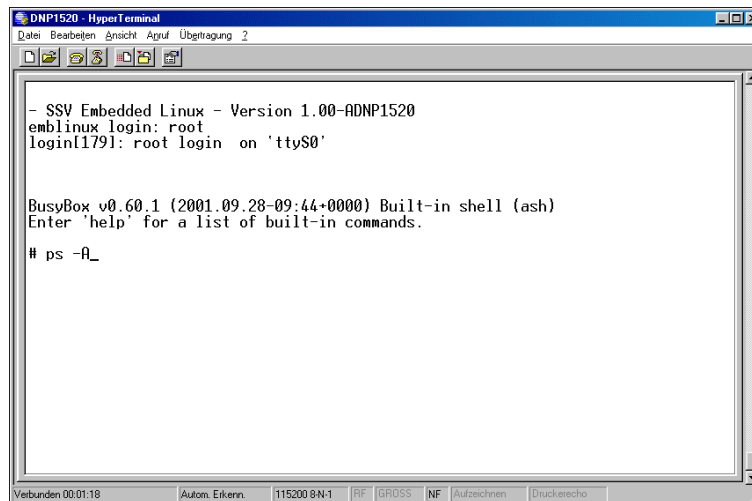
```

Figure 5-13: Linux login prompt



## 5.1.6 Login via Serial Console

From a development system running under MS-Windows you can gain access onto the ADNP/1520 via the HyperTerminal program by using the username *gast*. There is no specific password needed. On the point where the password is expected simply press the *Enter* (Return) key. After a successful login type in the command *ps -A*. Your system is now ready to execute arbitrary commands.



```
DNP1520 - HyperTerminal
Datei Bearbeiten Ansicht Anruf Übertragung 2

- SSV Embedded Linux - Version 1.00-ADNP1520
emblinux login: root
login[179]: root login on 'ttyS0'

BusyBox v0.60.1 (2001.09.28-09:44+0000) Built-in shell (ash)
Enter 'help' for a list of built-in commands.

# ps -A_

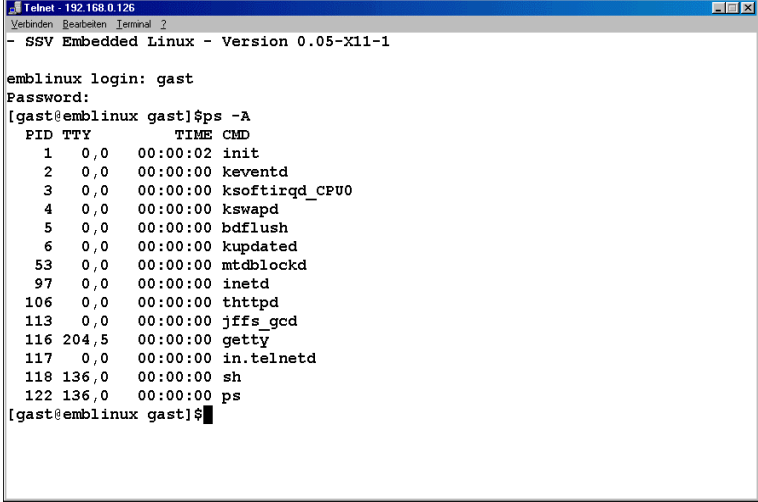
Verbunden 00:01:18 Autom. Erkenn. 115200 8N-1 RF GROSS NF Aufzeichnen Druckausgabe
```

Figure 5-14: Login procedure via HyperTerminal

## 5.1.7 Login via Telnet

You are now able to start a Telnet client on the development system. Open a command shell and enter the following command:

```
telnet 192.168.0.126
```



```
Telnet - 192.168.0.126
Verbinden Bearbeiten Terminal 2
- SSV Embedded Linux - Version 0.05-X11-1

emblinux login: gast
Password:
[gast@emblinux gast]$ps -A
  PID TTY          TIME CMD
    1  0,0    00:00:02 init
    2  0,0    00:00:00 keventd
    3  0,0    00:00:00 ksoftirqd_CPU0
    4  0,0    00:00:00 kswapd
    5  0,0    00:00:00 bdflush
    6  0,0    00:00:00 kupdated
   53  0,0    00:00:00 mtdblockd
   97  0,0    00:00:00 inetd
  106  0,0    00:00:00 thttpd
  113  0,0    00:00:00 jffs_gcd
  116 204,5  00:00:00 getty
  117  0,0    00:00:00 in.telnetd
  118 136,0  00:00:00 sh
  122 136,0  00:00:00 ps
[gast@emblinux gast]$
```

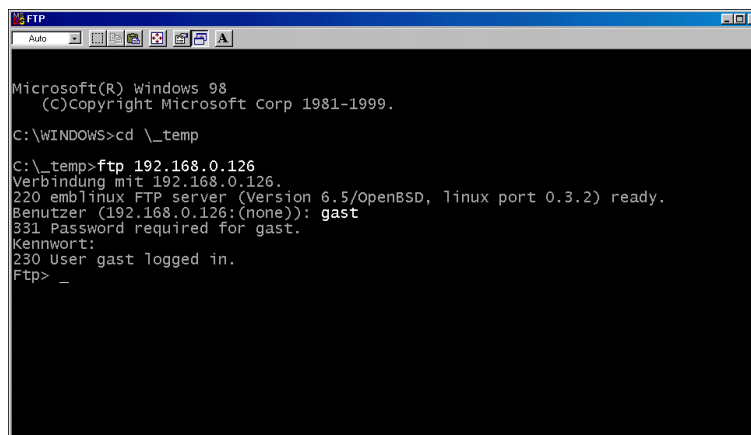
**Figure 5-15: Login procedure via Telnet**

Please pay attention, this command will pass the IP-address of your ADNP/1520 as parameter to the client.

## 5.1.8 File Transfer via FTP

The **File Transfer Protocol (FTP)** provides a common approach to transfer files between clients and servers. FTP is a client/server protocol like Telnet. The FTP client/server capability is build into most Windows versions. An FTP session begins when the client builds a TCP/IP connection to the server. Once this connection is established, the client will log on to this server. In our actual case your development system acts as client and the ADNP/1520 operates as server. After the successful access onto the server you are able to execute various file transfer commands, which typically concern the navigation through the FTP server's directory structure and send or receive files. In the following an example of an FTP session is shown.

To use the File Transfer Protocol on your system, please open a DOS window (via the Windows Start menu) and branch into the desired subdirectory. Now enter **FTP 192.168.0.126** and open an FTP connection between client and server. The system will now ask you for a username. To answer this request please enter **gast** and confirm the expected password with simply pressing the **Enter**-key. At this point there is no specific password required. On figure 16 you see the described user inputs in form of highlighted text.



```
Microsoft(R) Windows 98
(C)Copyright Microsoft Corp 1981-1999.

C:\WINDOWS>cd \_temp

C:\_temp>ftp 192.168.0.126
Verbindung mit 192.168.0.126.
220 emlinux FTP server (Version 6.5/OpenBSD, linux port 0.3.2) ready.
Benutzer (192.168.0.126:(none)): gast
331 Password required for gast.
Kennwort:
230 User gast logged in.
Ftp> _
```

Figure 5-16: Login procedure via FTP

Now you are ready to transfer a file from your Windows-based development system to the ADNP/1520. Before you can transfer a file via FTP you should check, that the FTP link is set correctly to the binary operation mode via the **binary** command. In some cases the default setting is ASCII. With the **pwd** command you can check out the name of the remote directory. Please note, that the Read/Write access is only allowed for the directory **|home|gast**. To transfer a file from your development system to the ADNP/1520 use the command:

**put filename**

For a first view on the content of a directory you should use *ls -al*. This command shows you the files stored inside a specific directory. To terminate an FTP session use the command *bye*. This will cancel every operation between client and server. The figure below shows you these operations.

```

MS-DOS-Eingabeaufforderung
331 Password required for gast.
Kennwort:
230 User gast logged in.
Ftp> binary
200 Type set to I.
Ftp> pwd
257 "/home/gast" is current directory.
Ftp> put midlets1.pdf
200 PORT command successful.
150 Opening BINARY mode data connection for 'midlets1.pdf'.
226 Transfer complete.
Ftp: 184320 Bytes gesendet in 2.09Sekunden 88.19KB/Sek.
Ftp> ls -al
200 PORT command successful.
150 Opening ASCII mode data connection for '/bin/ls'.
total 183
drwxr-xr-x  2 gast users   96 Jan 1 00:16 .
drwxr-xr-x  3 root root   96 Jan 25 12:50 ..
-rw-r----- 1 gast users 184320 Jan 1 00:17 midlets1.pdf
226 Transfer complete.
Ftp: 173 Bytes empfangen in 0.00Sekunden 173000.00KB/Sek.
Ftp> bye
221 Goodbye.
C:\_temp>

```

Figure 5-17: FTP file transfer under DOS

In some Windows versions the Internet Explorer is able to act as FTP client just like an Internet browser. To transfer files by using the Internet Explorer enter *ftp://gast@192.168.0.126* as URL into the address bar. Moreover open the Windows Explorer as second file destination. Now you can transfer your desired files very easy by using drag and drop between these two windows. Simply drag the selected file(s) from the Windows Explorer into the Internet Explorer window and drop it down into the chosen directory.

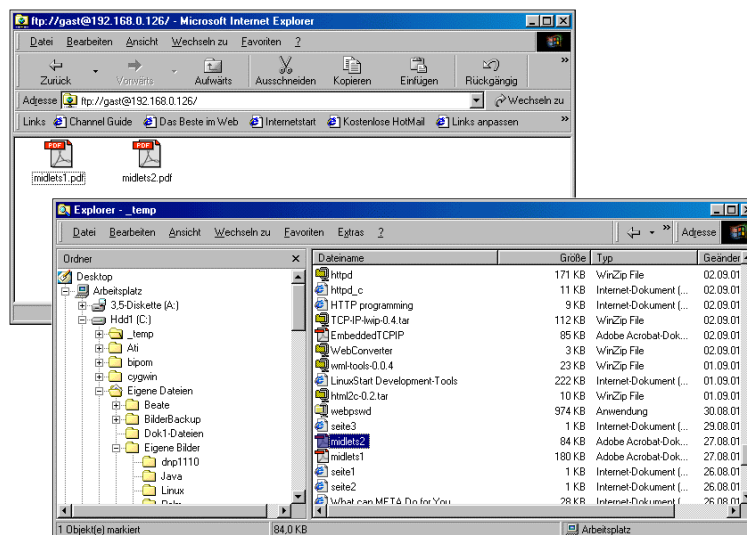


Figure 5-18: File transfer with the Internet Explorer

## 5.2 Using a Linux-based development System

The following paragraphs will help you to use the ADNP/1520 with a development system running under Linux. For this steps are some programs necessary, which normally come along with the Linux installation (i.e. Minicom). Please make sure that these programs are present on your development system. If necessary you have to install these programs from your Linux installation CD-ROM.

### 5.2.1 Setup the Serial Link

Before you provide the Evaluation Board with power for the first time, please run a terminal program like **Minicom**. Minicom is a simple serial communication program originally written by Miquel van Smoorenburg. It offers basic communication capabilities and integrates well with the Linux user interface. Minicom is a lot like the old MS-DOS program PROCOMM. This program can be used to connect a Linux-based PC to embedded devices such as the ADNP/1520 for initial configurations. In the following we will show you how to use Minicom and what you have to do to adjust the necessary settings.

Open a terminal window and type in the command *minicom -s* to get access to the serial port settings. Now you can change some configuration parameters – such as the maximum baud rate. Set the serial port parameters for the maximum baud rate on "115.200 bps".

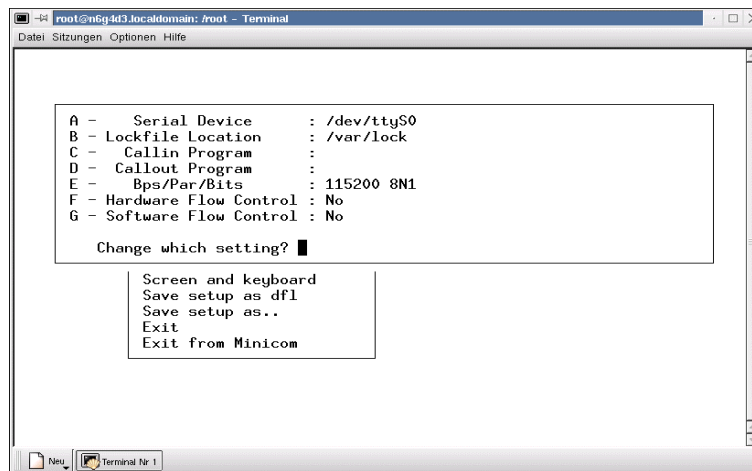
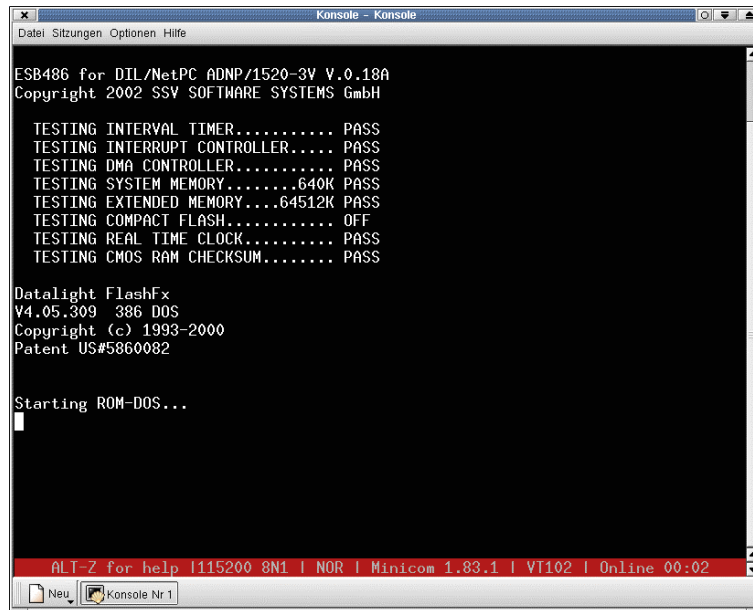


Figure 5-19: Serial Port Settings under Minicom

After that, please turn on the power for the Evaluation Board. You will now see all steps of the ADNP/1520 ROM-DOS boot process via Minicom.



```
Konsole - Konsole
Datei Sitzungen Optionen Hilfe

ESB486 for DIL/NetPC ADNP/1520-3V V.0.18A
Copyright 2002 SSV SOFTWARE SYSTEMS GmbH

TESTING INTERVAL TIMER..... PASS
TESTING INTERRUPT CONTROLLER.... PASS
TESTING DMA CONTROLLER..... PASS
TESTING SYSTEM MEMORY.....640K PASS
TESTING EXTENDED MEMORY....64512K PASS
TESTING COMPACT FLASH..... OFF
TESTING REAL TIME CLOCK..... PASS
TESTING CMOS RAM CHECKSUM..... PASS

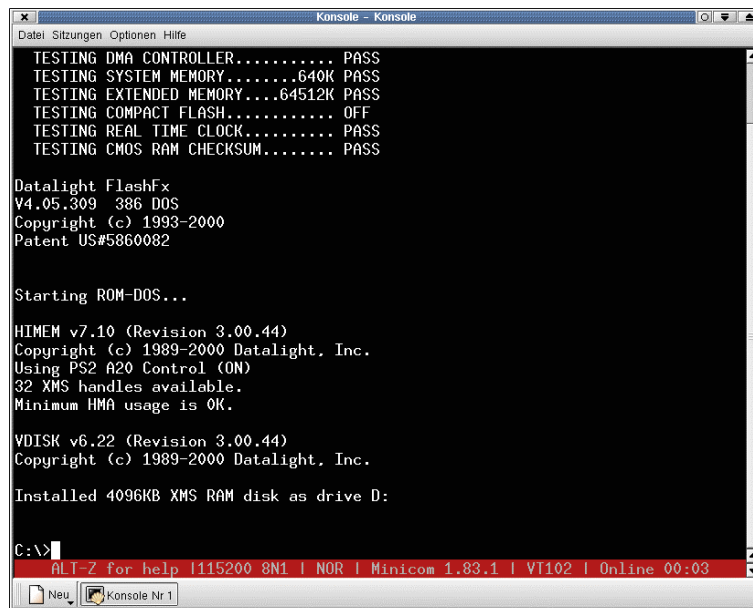
Datalight FlashFx
V4.05.309 386 DOS
Copyright (c) 1993-2000
Patent US#5860082

Starting ROM-DOS...
█

ALT-Z for help | I115200 8N1 | NOR | Minicom 1.83.1 | VT102 | OnLine 00:02
```

Figure 5-20: ROM-DOS boot process in progress

To the end of this sequence a ROM-DOS command prompt will appear. The boot process of the ADNP/1520 is now complete.



```
Konsole - Konsole
Datei Sitzungen Optionen Hilfe

TESTING DMA CONTROLLER..... PASS
TESTING SYSTEM MEMORY.....640K PASS
TESTING EXTENDED MEMORY....64512K PASS
TESTING COMPACT FLASH..... OFF
TESTING REAL TIME CLOCK..... PASS
TESTING CMOS RAM CHECKSUM..... PASS

Datalight FlashFx
V4.05.309 386 DOS
Copyright (c) 1993-2000
Patent US#5860082

Starting ROM-DOS...

HIMEM v7.10 (Revision 3.00.44)
Copyright (c) 1989-2000 Datalight, Inc.
Using PS2 A20 Control (ON)
32 XMS handles available.
Minimum HMA usage is OK.

VDISK v6.22 (Revision 3.00.44)
Copyright (c) 1989-2000 Datalight, Inc.

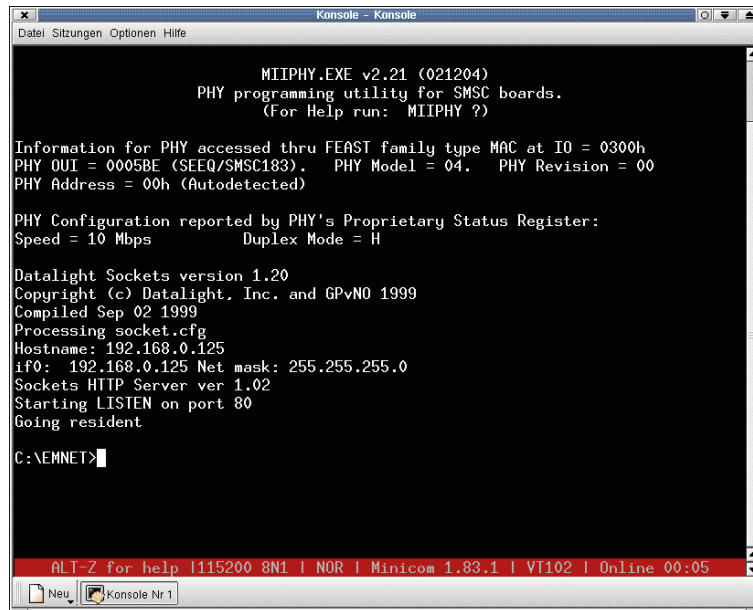
Installed 4096KB XMS RAM disk as drive D:

C:\>

ALT-Z for help | I115200 8N1 | NOR | Minicom 1.83.1 | VT102 | OnLine 00:03
```

Figure 5-21: After the ROM-DOS boot process

Now please enter *cd emnet* to change into the directory EMNET. Then type in *start* to run the Web server inside the ADNP/1520.



```
Konsole - Konsole
Datei Sitzungen Optionen Hilfe

MIIPHY.EXE v2.21 (021204)
PHY programming utility for SMSC boards.
(For Help run: MIIPHY ?)

Information for PHY accessed thru FEAST family type MAC at IO = 0300h
PHY OUI = 0005BE (SEEQ/SMSC183). PHY Model = 04. PHY Revision = 00
PHY Address = 00h (Autodetected)

PHY Configuration reported by PHY's Proprietary Status Register:
Speed = 10 Mbps Duplex Mode = H

Datalight Sockets version 1.20
Copyright (c) Datalight, Inc. and GPvNO 1999
Compiled Sep 02 1999
Processing socket.cfg
Hostname: 192.168.0.125
if0: 192.168.0.125 Net mask: 255.255.255.0
Sockets HTTP Server ver 1.02
Starting LISTEN on port 80
Going resident

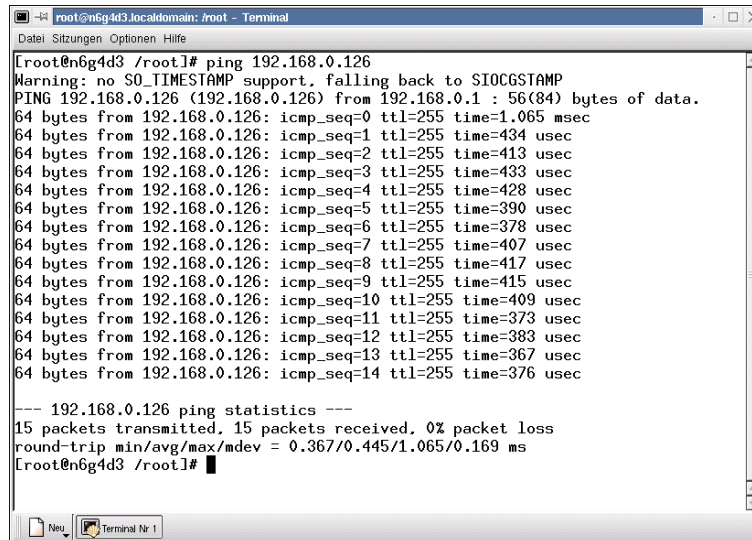
C:\EMNET>
```

Figure 5-22: Running the DOS-based Web server

**Note:** For a first test of the ADNP/1520 you have to change the assigned IP-address of your development system to *192.168.0.1*. Please make sure, that you don't use another IP-address – this could lead to different network problems.

## 5.2.2 Checking the Ethernet Link

Please open a shell window and type in *ping 192.168.0.126*. Every ping request has to be answered by your ADNP/1520 similar as shown below.



```
root@n6g4d3.localdomain: /root - Terminal
Datei Sitzungen Optionen Hilfe

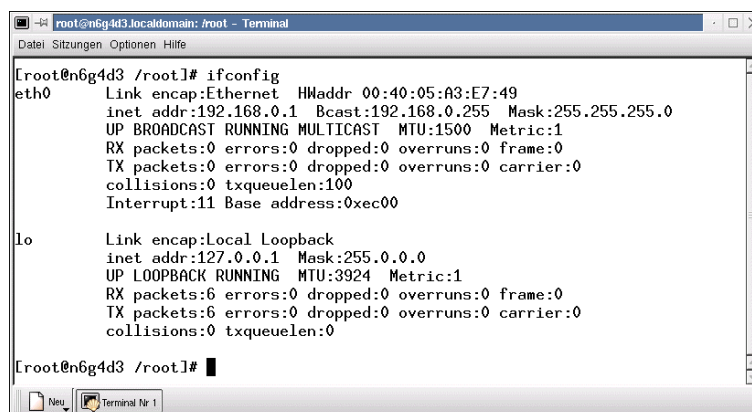
[root@n6g4d3 /root]# ping 192.168.0.126
Warning: no SO_TIMESTAMP support, falling back to SIOCGSTAMP
PING 192.168.0.126 (192.168.0.126) from 192.168.0.1 : 56(84) bytes of data.
64 bytes from 192.168.0.126: icmp_seq=0 ttl=255 time=1.065 msec
64 bytes from 192.168.0.126: icmp_seq=1 ttl=255 time=434 usec
64 bytes from 192.168.0.126: icmp_seq=2 ttl=255 time=413 usec
64 bytes from 192.168.0.126: icmp_seq=3 ttl=255 time=433 usec
64 bytes from 192.168.0.126: icmp_seq=4 ttl=255 time=428 usec
64 bytes from 192.168.0.126: icmp_seq=5 ttl=255 time=390 usec
64 bytes from 192.168.0.126: icmp_seq=6 ttl=255 time=378 usec
64 bytes from 192.168.0.126: icmp_seq=7 ttl=255 time=407 usec
64 bytes from 192.168.0.126: icmp_seq=8 ttl=255 time=417 usec
64 bytes from 192.168.0.126: icmp_seq=9 ttl=255 time=415 usec
64 bytes from 192.168.0.126: icmp_seq=10 ttl=255 time=409 usec
64 bytes from 192.168.0.126: icmp_seq=11 ttl=255 time=373 usec
64 bytes from 192.168.0.126: icmp_seq=12 ttl=255 time=383 usec
64 bytes from 192.168.0.126: icmp_seq=13 ttl=255 time=367 usec
64 bytes from 192.168.0.126: icmp_seq=14 ttl=255 time=376 usec

--- 192.168.0.126 ping statistics ---
15 packets transmitted, 15 packets received, 0% packet loss
round-trip min/avg/max/mdev = 0.367/0.445/1.065/0.169 ms
[root@n6g4d3 /root]#
```

Figure 5-23: Ping Request

To cancel the ping request just press the keyboard shortcut *Ctrl+C*. If an error occurs (e.g. the ADNP/1520 don't answer the ping of your development system) you have to check your cable connections at first.

Then you should check if the IP-address is set correctly to "192.168.0.1". For an easy check of the IP-address, you can use the Linux-command *ifconfig*.



```
root@n6g4d3.localdomain: /root - Terminal
Datei Sitzungen Optionen Hilfe

[root@n6g4d3 /root]# ifconfig
eth0      Link encap:Ethernet  HWaddr 00:40:05:A3:E7:49
          inet addr:192.168.0.1  Bcast:192.168.0.255  Mask:255.255.255.0
          UP BROADCAST RUNNING MULTICAST  MTU:1500  Metric:1
          RX packets:0 errors:0 dropped:0 overruns:0 frame:0
          TX packets:0 errors:0 dropped:0 overruns:0 carrier:0
          collisions:0 txqueuelen:100
          Interrupt:11 Base address:0xec00

lo        Link encap:Local Loopback
          inet addr:127.0.0.1  Mask:255.0.0.0
          UP LOOPBACK RUNNING  MTU:3924  Metric:1
          RX packets:6 errors:0 dropped:0 overruns:0 frame:0
          TX packets:6 errors:0 dropped:0 overruns:0 carrier:0
          collisions:0 txqueuelen:0

[root@n6g4d3 /root]#
```

Figure 5-24: IP-address check via ifconfig



### 5.2.3 Web Server Access

Once the ping was successful, you are ready to start a Web browser on your development system. This may be the Konqueror File Manager or the Netscape Communicator/Navigator. The Konqueror File Manager is normally part of the Linux installation and acts as File Manager as well as Web browser. Konqueror is able to detect automatically when an URL were entered and shows the content.

Just enter the URL *http://192.168.0.126/index.htm* and press the *Enter*-key. The Embedded Web Server will deliver you a small description about the ADNP/1520.

That's it. You are now online with the Starter Kit. The Web browser of your development system is connected to the Embedded Web Server of the ADNP/1520 and shows you a static web page with some pictures.

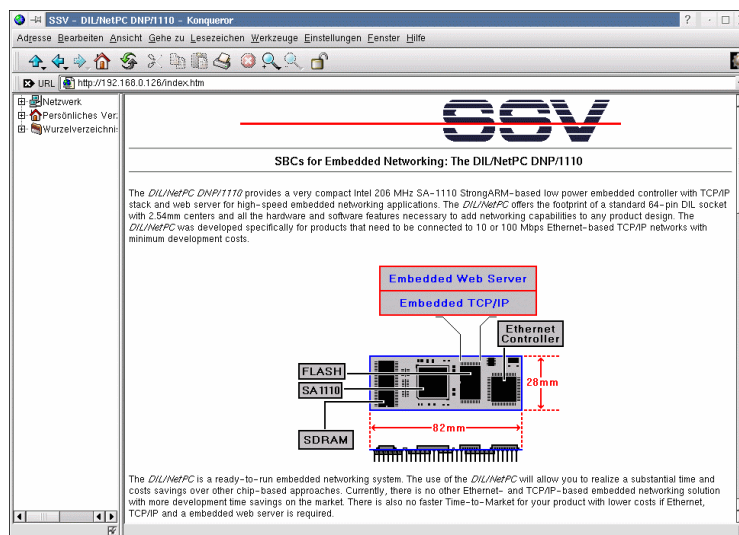


Figure 5-25: Web page shown by the Konqueror File Manager

## 5.2.4 Installing Linux

To use your ADNP/1520 with Linux you have to transfer some files from your Starterkit-CD-ROM to the ADNP/1520. At first, please restart the ADNP/1520 by pressing the reset button. This make sure, that the system is into the default configuration. Then open a Minicom session and type in **mkdir linux** to create a directory called LINUX. Type in **cd linux** to switch into this new directory. Now please type in the command **rb** and confirm this input with pressing **Enter**. The system turns into a wait state and shows this with sending the letter C to the screen.

```

Konsolle - Konsolle
Datei Sitzungen Optionen Hilfe
AUTOEXEC BAT      32 08-22-2002  11:40a
CONFIG  SYS       74 08-22-2002  11:40a
HIMEM   SYS      5.833 04-14-2000  5:22a
VDISK   SYS      8.092 04-14-2000  5:22a
EMNET   <DIR>     12-06-2002  10:00a
LINUX   <DIR>     01-01-1980  12:02a
9 file(s)
55.123 bytes
7.389.184 bytes free

C:\>cd linux
C:\>cd linux
C:\>dir
Volume in drive C is FX-SSD
Volume Serial Number is 6DFD-B6F0
Directory of C:\LINUX
.          <DIR>          01-01-1980  12:02a
..         <DIR>          01-01-1980  12:02a
2 file(s)
0 bytes
7.389.184 bytes free

C:\>cd linux
C:\>rb
RB.COM Receive Y-ModemG (Batch) Version 1.02 (c) SSV 2000
Wait for Files. End with CTRL-C!
C
ALT-Z for help |115200 8N1 | NOR | Minicom 1.83.1 | VT102 | Online 00:04

```

Figure 5-26: Installing Linux from the Starter Kit CD-ROM

At next select the "zmodem" option in the upcoming Minicom window and confirm this with pressing **Enter**. The reason to do this although you normally would choose "ymodem" is a little bug in Minicom, so here you have to select **zmodem** absolutely. Choosing "ymodem" may result in different error messages.

```

Konsolle - Konsolle
Datei Sitzungen Optionen Hilfe
2 file(s)
0 bytes
7.389.184 bytes free

C:\>cd linux
C:\>rb
RB.COM Receive Y-ModemG (Batch) Version 1.02 (c) SSV 2000
Wait for Files. End with CTRL-C!
User break
Program exit.
C:\>cd linux
C:\>rb
RB.COM Receive Y-ModemG (Batch) Version 1.02 (c) SSV 2000
Wait for Files. End with CTRL-C!
C
ALT-Z for help |115200 8N1 | NOR | Minicom 1.83.1 | VT102 | Online 00:06

```

Figure 5-27: Selecting transfer protocol

Then select the files you need to transfer to the ADNP/1520. In the directory `|cdrom|ROM-DOS|Linux-PreCfgs|PreCfg1` you find the four files.

LOADLIN.EXE	Bootloader
RIMAGE.GZ	Kernel
START.BAT	Batch File
ZIMAGE	Root Filesystem Image

Please select and transfer all these files to your ADNP/1520. When all files are transmitted leave this mode by pressing *Esc* on your keyboard.

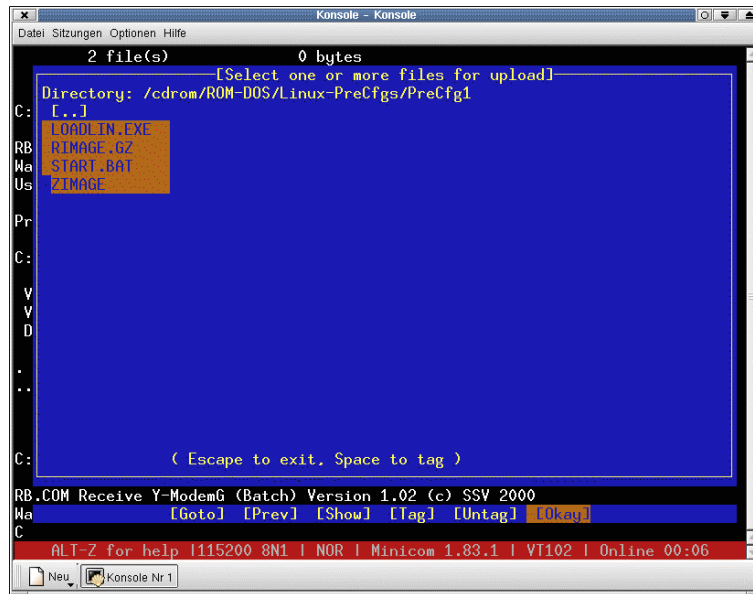


Figure 5-28: File select in rb mode

The following figure shows the file transfer process from the Starter Kit CD-ROM to the ADNP/1520.

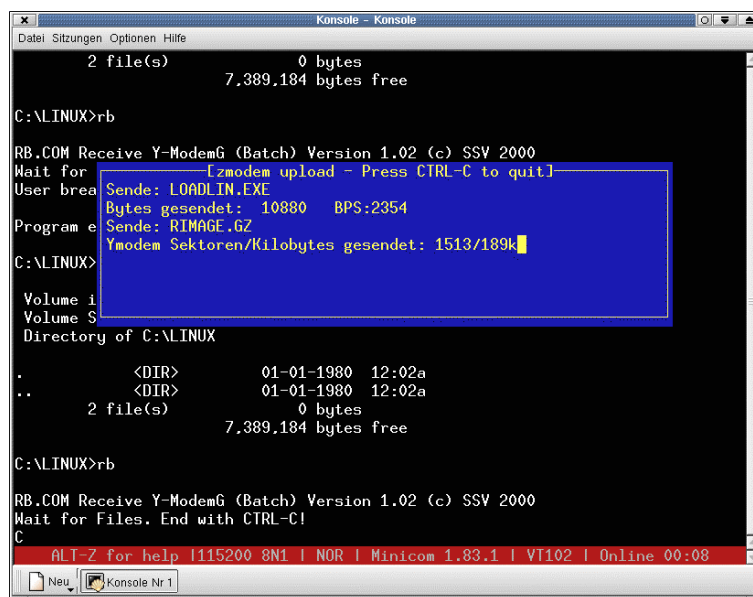
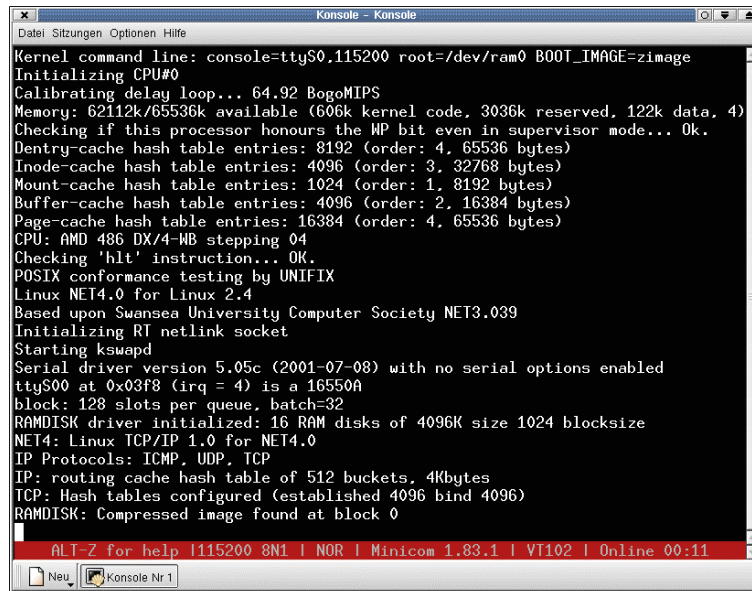


Figure 5-29: File transfer in rb mode

## 5.2.5 Running Linux

When all necessary files are placed on the ADNP/1520 you are ready to start Embedded Linux. For this, make sure, that you are within the directory C:\LINUX. Type in the command *start* and confirm this input with pressing *Enter*. After some boot messages you will see the following screen.



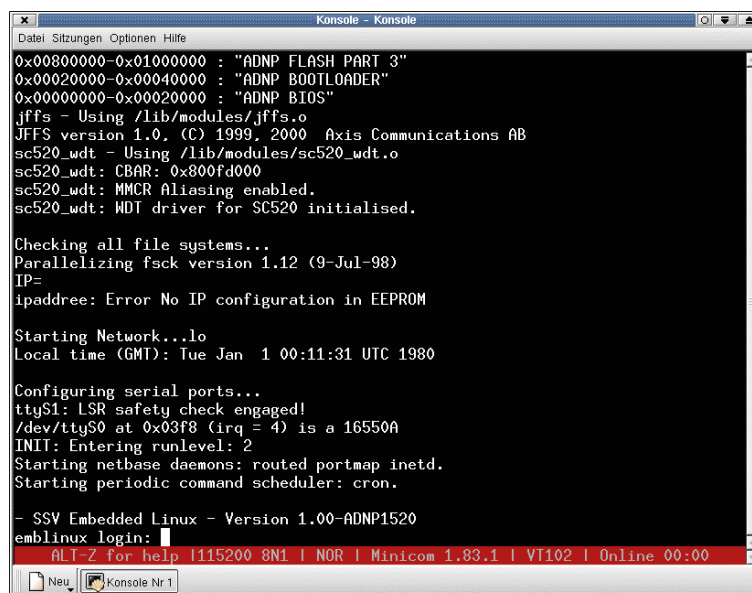
```

Kernel command line: console=ttyS0,115200 root=/dev/ram0 BOOT_IMAGE=zimage
Initializing CPU#0
Calibrating delay loop... 64.92 BogoMIPS
Memory: 62112k/65536k available (606k kernel code, 3036k reserved, 122k data, 4)
Checking if this processor honours the WP bit even in supervisor mode... Ok.
Dentry-cache hash table entries: 8192 (order: 4, 65536 bytes)
Inode-cache hash table entries: 4096 (order: 3, 32768 bytes)
Mount-cache hash table entries: 1024 (order: 1, 8192 bytes)
Buffer-cache hash table entries: 4096 (order: 2, 16384 bytes)
Page-cache hash table entries: 16384 (order: 4, 65536 bytes)
CPU: AMD 486 DX/4-WB stepping 04
Checking 'hlt' instruction... OK.
POSIX conformance testing by UNIFIX
Linux NET4.0 for Linux 2.4
Based upon Swansea University Computer Society NET3.039
Initializing RT netLink socket
Starting kswapd
Serial driver version 5.05c (2001-07-08) with no serial options enabled
ttyS00 at 0x03F8 (irq = 4) is a 16550A
block: 128 slots per queue, batch=32
RAMDISK driver initialized: 16 RAM disks of 4096K size 1024 blocksize
NET4: Linux TCP/IP 1.0 for NET4.0
IP Protocols: ICMP, UDP, TCP
IP: routing cache hash table of 512 buckets, 4Kbytes
TCP: Hash tables configured (established 4096 bind 4096)
RAMDISK: Compressed image found at block 0

```

Figure 5-30: Running Linux

When the Linux boot process is done the system will stop with the following login prompt.



```

0x00800000-0x01000000 : "ADNP FLASH PART 3"
0x00020000-0x00040000 : "ADNP BOOTLOADER"
0x00000000-0x00020000 : "ADNP BIOS"
jffs - Using /lib/modules/jffs.o
JFFS version 1.0, (C) 1999, 2000 Axis Communications AB
sc520_wdt - Using /lib/modules/sc520_wdt.o
sc520_wdt: CBAR: 0x800f4000
sc520_wdt: MMCR Aliasing enabled.
sc520_wdt: WDT driver for SC520 initialised.

Checking all file systems...
Parallelizing fsck version 1.12 (9-Jul-98)
IP=
ipaddress: Error No IP configuration in EEPROM

Starting Network...lo
Local time (GMT): Tue Jan 1 00:11:31 UTC 1980

Configuring serial ports...
ttyS1: LSR safety check engaged!
/dev/ttyS0 at 0x03F8 (irq = 4) is a 16550A
INIT: Entering runlevel: 2
Starting netbase daemons: routed portmap inetd.
Starting periodic command scheduler: cron.

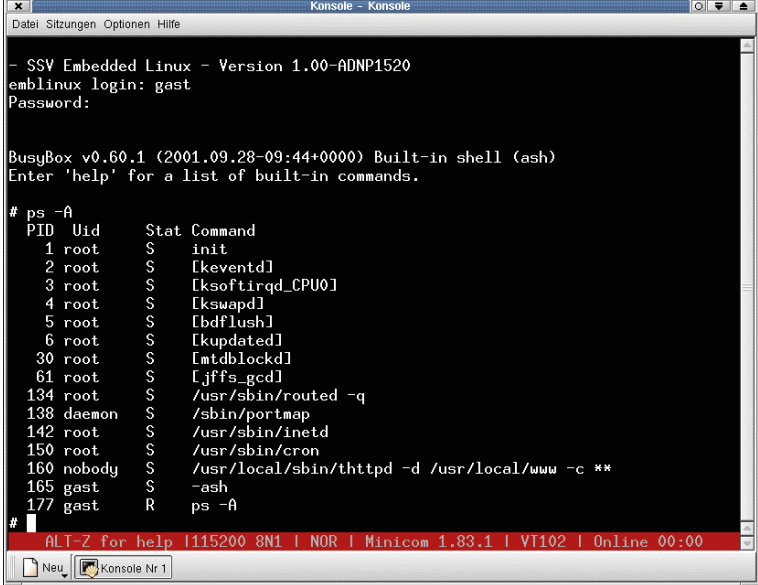
- SSV Embedded Linux - Version 1.00-ADNP1520
emlinux login:

```

Figure 5-31: Linux login

## 5.2.6 Login via Serial Console

Under Linux you can gain access onto the ADNP/1520 via Minicom by using the username *gast*. A specific password is not necessary. At this point simply press the *Enter* (Return) key. Your system is now ready to execute arbitrary Linux commands.



```
Konsole - Konsole
Datei Sitzungen Optionen Hilfe

- SSV Embedded Linux - Version 1.00-ADNP1520
emlinux login: gast
Password:

BusyBox v0.60.1 (2001.09.28-09:44+0000) Built-in shell (ash)
Enter 'help' for a list of built-in commands.

# ps -A
PID  Uid  Stat Command
  1  root  S    init
  2  root  S    [keventd]
  3  root  S    [ksoftirqd_CPU0]
  4  root  S    [kswapd]
  5  root  S    [bdflush]
  6  root  S    [kupdated]
 30  root  S    [mtdblockd]
 61  root  S    [jffs_gcd]
134  root  S    /usr/sbin/routed -q
138  daemon S    /sbin/portmap
142  root  S    /usr/sbin/inetd
150  root  S    /usr/sbin/cron
160  nobody S    /usr/local/sbin/thttpd -d /usr/local/www -c **
165  gast  S    -ash
177  gast  R    ps -A
#
```

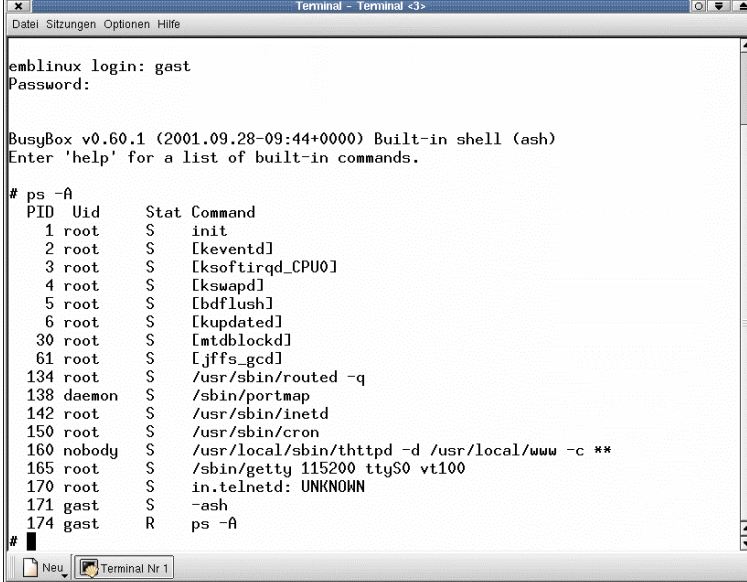
ALT-Z for help | 115200 8N1 | NOR | Minicom 1.83.1 | VT102 | OnLine 00:00

Figure 5-32: Login procedure via Minicom

## 5.2.7 Login via Telnet

You are now able to start a telnet client on the development system. Open a Minicom command shell and enter the following command:

```
telnet 192.168.0.126
```



```
emblinux login: gast
Password:

BusyBox v0.60.1 (2001.09.28-09:44+0000) Built-in shell (ash)
Enter 'help' for a list of built-in commands.

# ps -A
  PID  Uid    Stat Command
    1  root    S      init
    2  root    S      [keventd]
    3  root    S      [ksoftirqd_CPU0]
    4  root    S      [kswapd]
    5  root    S      [bdflush]
    6  root    S      [kupdated]
   30  root    S      [mtdblockd]
   61  root    S      [jffs_gcd]
  134  root    S      /usr/sbin/routed -q
  138  daemon  S      /sbin/portmap
  142  root    S      /usr/sbin/inetd
  150  root    S      /usr/sbin/cron
  160  nobody  S      /usr/local/sbin/thttpd -d /usr/local/www -c **
  165  root    S      /sbin/getty 115200 ttyS0 vt100
  170  root    S      in.telnetd: UNKNOWN
  171  gast    S      -ash
  174  gast    R      ps -A

#
```

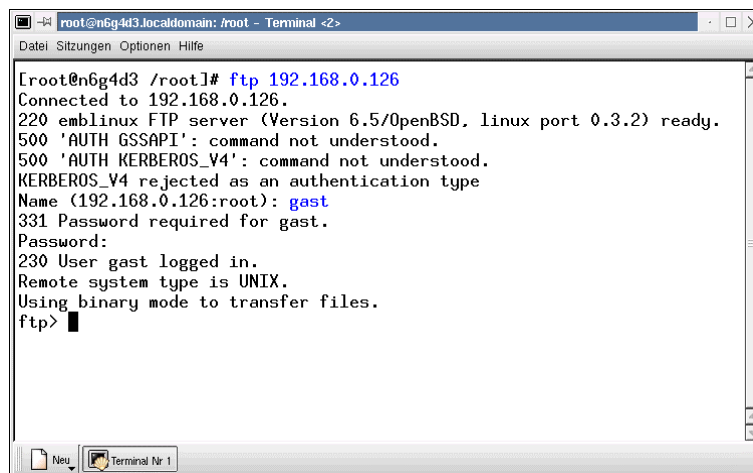
**Figure 5-33: Login procedure via Telnet**

Please pay attention, that this command will pass the IP-address of your ADNP/1520 as parameter to the client.

## 5.2.8 File Transfer via FTP

The **File Transfer Protocol** (FTP) provides a common approach to transfer files between clients and servers. FTP is a client/server protocol like Telnet. An FTP session begins when the client builds a TCP/IP connection to the server. Once this connection is established, the client will log on to this server. In our actual case your development system acts as client and the ADNP/1520 operates as server. After the successful access onto the server you are able to execute various file transfer commands, which typically involves navigating the FTP server's directory structure and send or receive files. In the following an example of an FTP Session is shown. The FTP client/server capability is already build into the Konqueror.

To use the File Transfer Protocol on your Linux system please open a command shell, like Minicom and branch into the desired subdirectory. Now enter **FTP 192.168.0.126** and open an FTP connection between client and server. The system will now ask you for a username. To answer this request please enter **gast** and confirm the expected password with pressing **Enter**. At this point there is no specific password required. On figure 31 you see the user inputs as highlighted text.



```
root@m6g4d3.localdomain: /root - Terminal <2>
Datei Sitzungen Optionen Hilfe

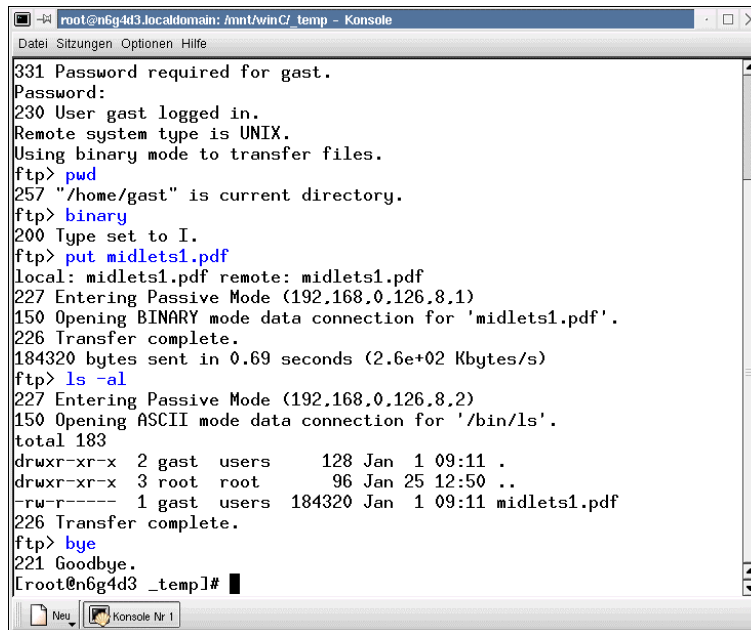
[root@m6g4d3 /root]# ftp 192.168.0.126
Connected to 192.168.0.126.
220 emlinux FTP server (Version 6.5/OpenBSD, linux port 0.3.2) ready.
500 'AUTH GSSAPI': command not understood.
500 'AUTH KERBEROS_V4': command not understood.
KERBEROS_V4 rejected as an authentication type
Name (192.168.0.126:root): gast
331 Password required for gast.
Password:
230 User gast logged in.
Remote system type is UNIX.
Using binary mode to transfer files.
ftp> █
```

Figure 5-34: Login procedure via FTP

Now you are ready to transfer a file from a Linux-based development system to the ADNP/1520. Before you can transfer a file with FTP you should check, that the FTP link mode is correctly set to the binary operation mode via the **binary** command. In some cases the default setting is ASCII. With the command **pwd** you can check out the name of the remote directory. The Read/Write access is only allowed for the directory **|home|gast**. To transfer a file from your development system to the ADNP/1520 use **put filename** to transfer the desired file.

For a first view on the content of a directory you should use **ls -al**. This command shows you the files stored inside a specific directory. To terminate an FTP session use the command **bye**.

This command cancels every operation between server and client. Figure 32 shows you these operations.



```

root@n6g4d3.localdomain: /mnt/winC/ temp - Konsole
Datei Sitzungen Optionen Hilfe
331 Password required for gast.
Password:
230 User gast logged in.
Remote system type is UNIX.
Using binary mode to transfer files.
ftp> pwd
257 "/home/gast" is current directory.
ftp> binary
200 Type set to I.
ftp> put midlets1.pdf
local: midlets1.pdf remote: midlets1.pdf
227 Entering Passive Mode (192.168.0.126,8,1)
150 Opening BINARY mode data connection for 'midlets1.pdf'.
226 Transfer complete.
184320 bytes sent in 0.69 seconds (2.6e+02 Kbytes/s)
ftp> ls -al
227 Entering Passive Mode (192.168.0.126,8,2)
150 Opening ASCII mode data connection for '/bin/ls'.
total 183
drwxr-xr-x  2 gast  users   128 Jan  1 09:11 .
drwxr-xr-x  3 root  root    96 Jan 25 12:50 ..
-rw-r----- 1 gast  users 184320 Jan  1 09:11 midlets1.pdf
226 Transfer complete.
ftp> bye
221 Goodbye.
[root@n6g4d3 _temp]#

```

Figure 5-35: File transfer with Minicom

Next to Minicom it is also possible to use the Konqueror File Manager to transfer files by FTP. For this, please open Konqueror and enter *ftp://gast@192.168.0.126* as URL into the address bar. The Konqueror knows the difference between your system directories and folders (\\) and an Internet or intranet address (/). So you can simply type in the desired address. Open a second instance of Konqueror and change into the desired source directory. After that, you are able to transfer arbitrary files very easy by using drag and drop between these two Konqueror windows.

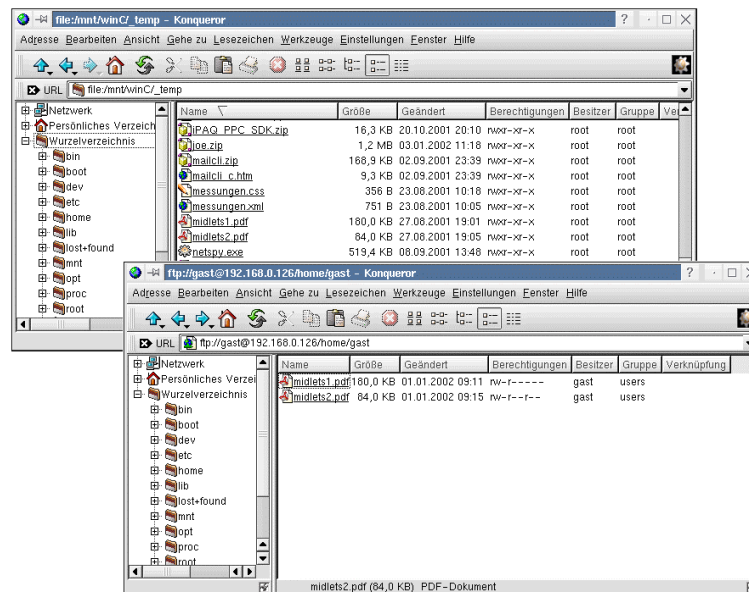


Figure 5-36: File transfer with the Konqueror



## 6 Setting your own IP-address with Linux

---

The ADNP/1520 comes with a pre-configured IP-address. This default IP-address of the ADNP/1520 for running under DOS is set to 192.168.0.125. When the ADNP/1520 is running under Linux the IP-address is set to 192.168.0.126

### 6.1 Setting the IP-address under DOS

---

The default IP-address for a Windows-based development system running you can find within the file *Socket.cfg* which is located in the directory *C:\Emnet*. Alternatively this file is stored inside the directory *E:\ROM-DOS\TCP-IP\Emnet* on your Starter Kit CD-ROM. The following Listing shows the content of the file *Socket.cfg*.

```
# INET.STU is the default StartUp file to be executed by
SOCKETP.EXE.

# (You should edit INET.HST to contain all your IP addresses
# linked suitable host names. See also the SETHOST utility
# that can link IP addresses to MAC/Ether addresses.)
# In the next line, "demo" should be replaced with this
machine's
# host name, decimal IP address or variable containing the
name.
ip address 192.168.0.125

# Iface sets the physical interfaces used. (Packet driver,
serial ports, etc.)
# Interrupt vector of your packet driver is 0x60
iface pdr if0 dix 1500 10 0x60

# When using a gateway (IP router) to the rest of the world,
# replace "XXX.XXX.XXX.XXX" with your gateway ip.
# route add default if0 XXX.XXX.XXX.XXX

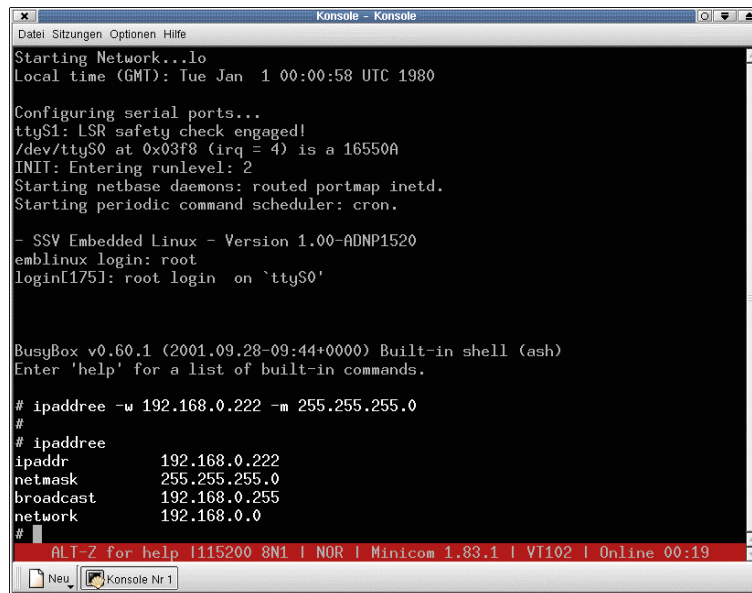
# When using a dns to resolve name lookups, replace
"XXX.XXX.XXX.XXX"
# with your gateway ip.
# domain server XXX.XXX.XXX.XXX

# The following line will just display the info for easy
verification:
ip address

# The following lines set TCP/IP parameters:
ip ttl 15
tcp mss 1460
tcp window 2920
```

## 6.2 Setting the IP-address under Linux

To set the IP-address of your ADNP/1520 with a development system running under Linux it is necessary to open a serial data connection between the development system and the ADNP/1520. Please use *root* as login name and type in *ipadtree* to start the respective program.



```
Konsole - Konsole
Datei Sitzungen Optionen Hilfe
Starting Network...lo
Local time (GMT): Tue Jan  1 00:00:58 UTC 1980

Configuring serial ports...
ttyS1: LSR safety check engaged!
/dev/ttyS0 at 0x03f8 (irq = 4) is a 16550A
INIT: Entering runlevel: 2
Starting netbase daemons: routed portmap inetd.
Starting periodic command scheduler: cron.

- SSV Embedded Linux - Version 1.00-ADNP1520
emlinux login: root
login[175]: root login on `ttyS0'

BusyBox v0.60.1 (2001.09.28-09:44+0000) Built-in shell (ash)
Enter 'help' for a list of built-in commands.

# ipadtree -w 192.168.0.222 -m 255.255.255.0
#
# ipadtree
ipaddr      192.168.0.222
netmask     255.255.255.0
broadcast   192.168.0.255
network     192.168.0.0
#
ALT-7 for help | I115200 8N1 | NOR | Minicom 1.83.1 | VT102 | OnLine 00:19
Neu  Konsole Nr 1
```

Figure 6-1: Changing the IP-address with ipadtree

With help of ipadtree it is possible to change the IP-address of the ADNP/1520. With enter *ipadtree -?* the programm will show you a short help dialog.

**Note:** After you have changed the IP-address it is absolut necessary to restart the ADNP/1520. After the restart the changed settings will be stored durable in the Flash of the ADNP/1520.

## 7 Troubleshooting

This page shows problems that can be corrected by users. If a problem persists after trying these solutions, please contact SSV Embedded Systems.

Phenomenon	Probable Cause	Reference
No power to the system at all. Power light does not illuminate.	Power cable is unplugged	Make sure power cable is securely plugged in.
	Power supply failure.	Contact technical support.
	Defective power cable.	Contact technical support.
	Incorrect polarity.	Make sure polarity of the cable matched with polarity from connector.
No boot messages.	RCM jumper is not set.	Open RCM jumper will block all boot messages

## 8 Appendix

The Appendixes 1 to 4 give you more detailed information about the signals on the individual connectors. Table cells marked with NC indicate signals, which may be not connected.

### Appendix 1: Pin Assignment –128-pin QIL Connector (1. Part)

Pin	Name	Group	Function
1	PA0	PIO	Parallel I/O, Port A, Bit 0 *
2	PA1	PIO	Parallel I/O, Port A, Bit 1 *
3	PA2	PIO	Parallel I/O, Port A, Bit 2*
4	PA3	PIO	Parallel I/O, Port A, Bit 3*
5	PA4	PIO	Parallel I/O, Port A, Bit 4*
6	PA5	PIO	Parallel I/O, Port A, Bit 5*
7	PA6	PIO	Parallel I/O, Port A, Bit 6*
8	PA7	PIO	Parallel I/O, Port A, Bit 7*
9	PB0	PIO	Parallel I/O, Port B, Bit 0*
10	PB1	PIO	Parallel I/O, Port B, Bit 1 *
11	PB2	PIO	Parallel I/O, Port B, Bit 2*
12	PB3	PIO	Parallel I/O, Port B, Bit 3*
13	PB4	PIO	Parallel I/O, Port B, Bit 4*
14	PB5	PIO	Parallel I/O, Port B, Bit 5*
15	PB6	PIO	Parallel I/O, Port B, Bit 6*
16	PB7	PIO	Parallel I/O, Port B, Bit 7*
17	PC0	PIO	Parallel I/O, Port C, Bit 0*
18	PC1	PIO	Parallel I/O, Port C, Bit 1 *
19	PC2	PIO	Parallel I/O, Port C, Bit 2*
20	PC3	PIO	Parallel I/O, Port C, Bit 3*
21	RXD1	SIO	COM1 Serial Port, RXD Pin
22	TXD1	SIO	COM1 Serial Port, TXD Pin
23	CTS1	SIO	COM1 Serial Port, CTS Pin
24	RTS1	SIO	COM1 Serial Port, RTS Pin
25	DCD1	SIO	COM1 Serial Port, DCD Pin
26	DSR1	SIO	COM1 Serial Port, DSR Pin
27	DTR1	SIO	COM1 Serial Port, DTR Pin
28	RI1	SIO	COM1 Serial Port, RI Pin
29	RESIN	RESET	Reset Input
30	TX+	LAN	Ethernet Interface, TX+ Pin
31	TX-	LAN	Ethernet Interface, TX- Pin
32	GND	----	Ground

**Table 8-1: ADNP/1520 Pinout – Pin 1 to 32**

The PIO pins 1 to 20 are driven by an in-system programmable (ISP) high density PLD (ispMACH256 or similar). It is possible to change the function of these pins over the ADNP/1520 JTAG interface. Please contact our support staff for more information.

## Appendix 1: Pin Assignment –128-pin QIL Connector (2. Part)

Pin	Name	Group	Function
33	RX+	LAN	Ethernet Interface, RX+ Pin
34	RX-	LAN	Ethernet Interface, RX- Pin
35	RESOUT	RESET	Reset Output
36	VBAT	PSP	SC520 Real Time Clock Battery Input
37	CLKOUT	PSP	Clock Output (Default 1.8432 MHz)
38	TXD2	PSP	COM2 Serial Port, TXD Pin
39	RXD2	PSP	COM2 Serial Port, RXD Pin
40	INT5	PSP	Programmable Interrupt Input 5
41	INT4	PSP	Programmable Interrupt Input 4
42	INT3	PSP	Programmable Interrupt Input 3
43	INT2	PSP	Programmable Interrupt Input 2
44	INT1	PSP	Programmable Interrupt Input 1
45	CS4	PSP	Programmable Chip Select Output 4
46	CS3	PSP	Programmable Chip Select Output 3
47	CS2	PSP	Programmable Chip Select Output 2
48	CS1	PSP	Programmable Chip Select Output 1
49	IOCHRDY	PSP	I/O Channel Ready
50	IOR	PSP	I/O Read Signal, I/O Expansion Bus
51	IOW	PSP	I/O Write Signal, I/O Expansion Bus
52	SA3	PSP	System Expansion Bus, Address Bit 3
53	SA2	PSP	System Expansion Bus, Address Bit 2
54	SA1	PSP	System Expansion Bus, Address Bit 1
55	SA0	PSP	System Expansion Bus, Address Bit 0
56	SD7	PSP	System Expansion Bus, Data Bit 7
57	SD6	PSP	System Expansion Bus, Data Bit 6
58	SD5	PSP	System Expansion Bus, Data Bit 5
59	SD4	PSP	System Expansion Bus, Data Bit 4
60	SD3	PSP	System Expansion Bus, Data Bit 3
61	SD2	PSP	System Expansion Bus, Data Bit 2
62	SD1	PSP	System Expansion Bus, Data Bit 1
63	SD0	PSP	System Expansion Bus, Data Bit 0
64	Vcc	PSP	3.3 Volt Power Input

Table 8-2: ADNP/1520 Pinout – Pin 33 to 64

## Appendix 1: Pin Assignment –128-pin QIL Connector (3. Part)

Pin	Name	Group	Function
65	SBHE	PSP	System Byte High Enable, Sys. Exp. Bus
66	IOCS16	PSP	I/O Chip Select 16, Sys. Expansion Bus
67	MEMCS16	PSP	Memory Chip Select 16, Sys. Exp. Bus
68	MEMW	PSP	Memory Write Signal, Sys. Expansion Bus
69	MEMR	PSP	Memory Read Signal, Sys. Expansion Bus
70	BALE	PSP	Bus Address Latch Enable, Sys. Exp. Bus
71	AEN	PSP	Address Enable Signal, Sys. Expansion Bus
72	Reserved	PSP	Reserved. Don't use
73	RCME	PSP	Remote Console Mode Enable
74	Reserved	PSP	Reserved. Don't use
75	Reserved	PSP	Reserved. Don't use
76	Reserved	PSP	Reserved. Don't use
77	Reserved	PSP	Reserved. Don't use
78	Reserved	PSP	Reserved. Don't use
79	Reserved	PSP	Reserved. Don't use
80	Reserved	PSP	Reserved. Don't use
81	Reserved	PSP	Reserved. Don't use
82	Reserved	PSP	Reserved. Don't use
83	Reserved	PSP	Reserved. Don't use
84	Reserved	PSP	Reserved. Don't use
85	INT6	PSP	Programmable Interrupt Input 6
86	INT7	PSP	Programmable Interrupt Input 7
87	IDERES	PSP	IDE Interface Reset Output
88	IDECS0	PSP	IDE Interface Chip Select 0
89	IDECS1	PSP	IDE Interface Chip Select 1
90	Reserved	PSP	Reserved. Don't use
91	Reserved	PSP	Reserved. Don't use
92	Reserved	PSP	Reserved. Don't use
93	Reserved	PSP	Reserved. Don't use
94	Reserved	PSP	Reserved. Don't use
95	Reserved	PSP	Reserved. Don't use
96	GND	---	Ground

Table 8-3: ADNP/1520 Pinout – Pin 65 to 96

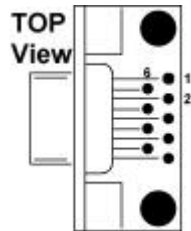
## Appendix 1: Pin Assignment –128-pin QIL Connector (4. Part)

Pin	Name	Group	Function
97	LANLED	PSP	LAN Interface Activity LED
98	Reserved	PSP	Reserved. Don't use
99	RSTDRV	PSP	Reset Output, System Expansion Bus
100	SA23	PSP	System Expansion Bus, Address Bit 23
101	SA22	PSP	System Expansion Bus, Address Bit 22
102	SA21	PSP	System Expansion Bus, Address Bit 21
103	SA20	PSP	System Expansion Bus, Address Bit 20
104	SA19	PSP	System Expansion Bus, Address Bit 19
105	SA18	PSP	System Expansion Bus, Address Bit 18
106	SA17	PSP	System Expansion Bus, Address Bit 17
107	SA16	PSP	System Expansion Bus, Address Bit 16
108	SA15	PSP	System Expansion Bus, Address Bit 15
109	SA14	PSP	System Expansion Bus, Address Bit 14
110	SA13	PSP	System Expansion Bus, Address Bit 13
111	SA12	PSP	System Expansion Bus, Address Bit 12
112	SA11	PSP	System Expansion Bus, Address Bit 11
113	SA10	PSP	System Expansion Bus, Address Bit 10
114	SA9	PSP	System Expansion Bus, Address Bit 9
115	SA8	PSP	System Expansion Bus, Address Bit 8
116	SA7	PSP	System Expansion Bus, Address Bit 7
117	SA6	PSP	System Expansion Bus, Address Bit 6
118	SA5	PSP	System Expansion Bus, Address Bit 5
119	SA4	PSP	System Expansion Bus, Address Bit 4
120	SD15	PSP	System Expansion Bus, Data Bit 15
121	SD14	PSP	System Expansion Bus, Data Bit 14
122	SD13	PSP	System Expansion Bus, Data Bit 13
123	SD12	PSP	System Expansion Bus, Data Bit 12
124	SD11	PSP	System Expansion Bus, Data Bit 11
125	SD10	PSP	System Expansion Bus, Data Bit 10
126	SD9	PSP	System Expansion Bus, Data Bit 9
127	SD8	PSP	System Expansion Bus, Data Bit 8
128	Vcc	---	3.3 Volt Power Input

Table 8-4: Pin assignment ADNP/1520 pin 97 to 128

## Appendix 2: Pin Assignment DNP/EVA2-SV4 Components

### COM1 Connector



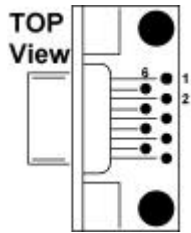
Pin	Signal
1	DCD
2	RxD
3	TxD
4	DTR
5	GND

Pin	Signal
6	DSR
7	RTS
8	CTS
9	RI

Table A2-1: Pinout COM1 Connector

**Caution:** All COM1-port signals are on RS232 level. There is no TTL level available on these ports. The RS232 level shifter is part of the DNP/EVA2-SV4 board.

### COM2 Connector



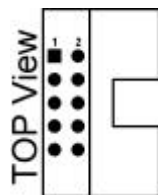
Pin	Signal
1	DCD
2	RxD
3	TxD
4	DTR
5	GND

Pin	Signal
6	DSR
7	RTS
8	CTS
9	RI

Table A2-2: Pinout COM2 Connector

**Please Note:** All COM2-port signals are on RS232 level. There is no TTL level available on these ports. The RS232 level shifter is part of the DNP/EVA2-SV4 board.

### COM3 Connector (RS232/RS485)



Pin	Signal
1	DCD
3	RxD*
5	TxD*
7	DTR
9	GND

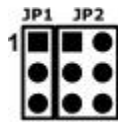
Pin	Signal
2	DSR
4	RTS
6	CTS
8	RI
10	

Table A2-3: Pinout COM3 Connector

\*: As default all COM3-port modem signals are on RS232 level. In addition to their adjustment the RxD and TxD signals are either on RS232 or on RS485 level.



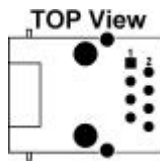
## COM3 RS232/485 Switch



Jumper JP1	Jumper JP2	Function
1-2	1-3 and 2-4	COM3 uses RS232 Protocol
2-3	3-5 and 4-6	COM3 uses RS485 Protocol

Table A2-4: COM3 RS232/485 Switch

## 10/100 Mbps Ethernet Connector



Pin	Name	Signal
1	TX+	TXD+
2	TX-	TXD-
3	RX+	RXD+
4	nc	---
5	nc	---
6	RX-	RXD-
7	nc	---
8	nc	---
S1..2	Shield	---

Table A2-5: Pinout 10/100 Mbps Ethernet Connector

## Power Connector



Pin	Name	Signal
1	VCC	Power In
2	GND	Power
3	GND	Power

Table A2-6: Pinout Power Connector

## RCM Jumper



Jumper JP3	Function
open	Disable RCM mode for ADNP/1520
close	Enable RCM mode for ADNP/1520

Table A2-7: RCM Jumper Settings

## Appendix 3: Using the Chip-Selects

The chip-selects on the ADNP/1520 have no default configuration so it is possible to make different user specific settings.

The chip-selects and **PAR**-areas (**P**rogrammable **A**ddress **R**ange) of the ADNP/1520 are mapped as shown in the following table. This table shows the allocation between the internal chip-selects and the chip-select lines on the Elan SC520.

ADNP CS	CS-Line (Elan)	PAR
CS1	GPCS2	PAR0
CS2	GPCS3	PAR1
CS3	GPCS4	PAR2
CS4	GPCS5	PAR3

Table A2-8: Chip-Select Mapping

Register	Mnemonic	MMCR Offset Addr.
Progr. Addr. Region0	PAR0	88h
Progr. Addr. Region1	PAR1	8Ch
Progr. Addr. Region2	PAR2	90h
Progr. Addr. Region3	PAR3	94h

Table A2-9: Address Decoding Registers–Memory-Mapped

**Note:** For further information please look at chapter 4 of the AMD Elan SC520 Microcontroller User’s Manual and the AMD Elan SC520 Microcontroller Register Set Manual page 2-5.

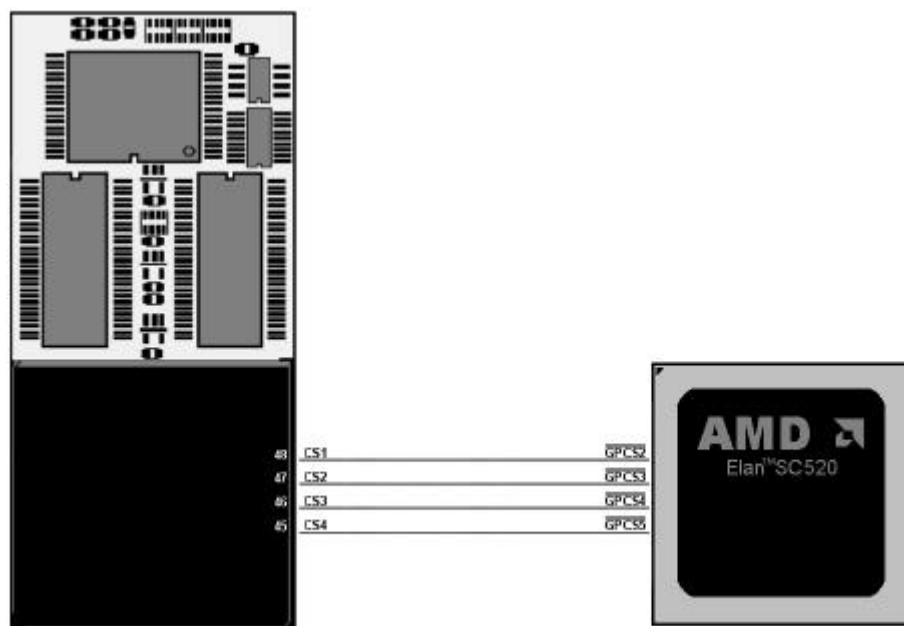


Figure 8-1: Chip-Select Allocation

**Please pay attention to the following information:**

All configuration registers that do not reside in PC/AT I/O space or PCI configuration space are memory-mapped and are located in a 4-Kbyte region in memory address space from FFFE000–FFFEFFFh (default setting).

- This 4-Kbyte region is called the memory-mapped configuration region (MMCR).
- The MMCR can optionally be relocated on any 4-Kbyte boundary in the lower 1-Gbyte region via an I/O mapped register called the Configuration Base Address (CBAR) register (Port FFFCh).
- The default MMCR region in high memory (below the boot space) is visible even if it is aliased via the Configuration Base Address (CBAR) register.

**Note:** The MMCR (Memory Mapped Configuration Range) of the ADNP/1520 is default mapped by the BIOS to the physical address FD000h (FD00:0000). This makes it easy to access the MMCR from DOS. Alternatively it is possible to use the default address space that were mentioned above.

**The following examples will show you how to programm a chip-select.**

**PAR Example:**

Address MMCR PAR0 = FD000h + Offset 88h -> FD088h  
 Address MMCR PAR1 = FD000h + Offset 8Ch -> FD08Ch  
 Address MMCR PAR2 = FD000h + Offset 90h -> FD090h  
 Address MMCR PAR3 = FD000h + Offset 94h -> FD094h

**Chip-Select Example:**

**CS1# (GPCS2#) :** IOCS at 0x100...0x107 -> PAR0 = **0x28070100**

**CS2# (GPCS3#) :** IOCS at 0x340...0x34F -> PAR1 = **0x2C0F0340**

**CS3# (GPCS4#) :** IOCS at 0x360...0x360 -> PAR2 = **0x30000360**

**CS4# (GPCS5#) :** MEMCS at 0x20000000...0x2007FFFF-> PAR3 = **0x5601E000**

**Example:** This program shows how to access the MMCR PAR0 from DOS to program CS1 as IOCS at 0100h–0107h

```
mov ax, 0FD00h
mov es, ax
mov eax, 28070100h
mov es: [88h], eax
```

## **Appendix 4: Connecting an external battery to the ADNP/1520**

---

To ensure the RTC (Real Time Clock) function of the ADNP/1520 when the main power is removed, an backup battery must be connected between VBAT (Pin36) and GND. This backup battery should be a lithium battery with a maximum current of approx. 3VDC. The power consumption of the ADNP/1520 has an amount of about 7 $\mu$ A. If mainpower is turned on–no battery power will be consumed.

## Appendix 5: Mechanical Dimensions

The ADNP/1520 uses a 128-pin QIL socket as mechanical base. The figure 50 shows the dimensions. All length dimensions have a tolerance of 0.5 mm.

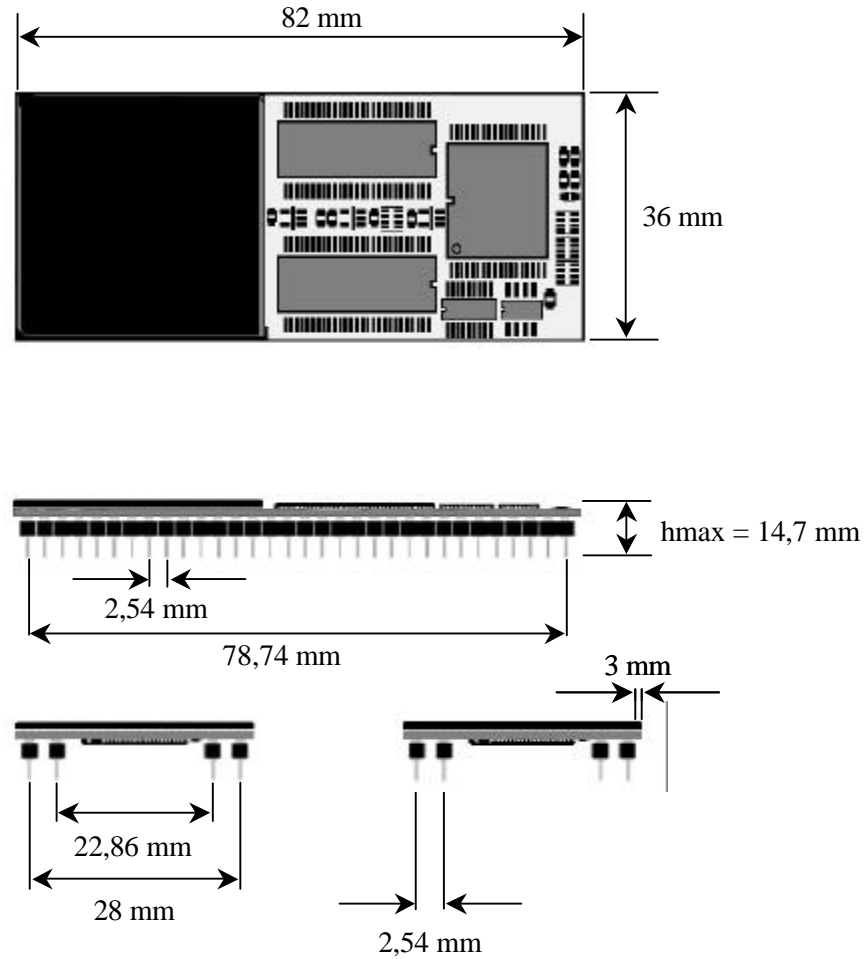


Figure A5-2: Dimensions of the ADNP/1520

## Appendix 6: GNU General Public License

---

GNU GENERAL PUBLIC LICENSE. Version 2, June 1991. Copyright © 1989, 1991 Free Software Foundation, Inc. 59 Temple Place, Suite 330, Boston, MA 02111-1307 USA. Everyone is permitted to copy and distribute verbatim copies of this license document, but changing it is not allowed.

### Preamble

The licenses for most software are designed to take away your freedom to share and change it. By contrast, the GNU General Public License is intended to guarantee your freedom to share and change free software—to make sure the software is free for all its users. This General Public License applies to most of the Free Software Foundation’s software and to any other program whose authors commit to using it. (Some other Free Software Foundation software is covered by the GNU Library General Public License instead.) You can apply it to your programs, too.

When we speak of free software, we are referring to freedom, not price. Our General Public Licenses are designed to make sure that you have the freedom to distribute copies of free software (and charge for this service if you wish), that you receive source code or can get it if you want it, that you can change the software or use pieces of it in new free programs; and that you know you can do these things.

To protect your rights, we need to make restrictions that forbid anyone to deny you these rights or to ask you to surrender the rights. These restrictions translate to certain responsibilities for you if you distribute copies of the software, or if you modify it.

For example, if you distribute copies of such a program, whether gratis or for a fee, you must give the recipients all the rights that you have. You must make sure that they, too, receive or can get the source code. And you must show them these terms so they know their rights.

We protect your rights with two steps: (1) copyright the software, and (2) offer you this license which gives you legal permission to copy, distribute and/or modify the software.

Also, for each author’s protection and ours, we want to make certain that everyone understands that there is no warranty for this free software. If the software is modified by someone else and passed on, we want its recipients to know that what they have is not the original, so that any problems introduced by others will not reflect on the original authors’ reputations. Finally, any free program is threatened constantly by software patents. We wish to avoid the danger that redistributors of a free program will individually obtain patent licenses, in effect making the program proprietary. To prevent this, we have made it clear that any patent must be licensed for everyone’s free use or not licensed at all.

The precise terms and conditions for copying, distribution and modification follow.

### GNU GENERAL PUBLIC LICENSE. TERMS AND CONDITIONS FOR COPYING, DISTRIBUTION AND MODIFICATION

1. This License applies to any program or other work which contains a notice placed by the copyright holder saying it may be distributed under the terms of this General Public License. The “Program”, below, refers to any such program or work, and a “work based on the Program” means either the Program or any derivative work under copyright law: that is to say, a work containing the Program or a portion of it, either verbatim or with modifications and/or translated into another language. (Hereinafter, translation is included without limitation in the term “modification”.) Each license is addressed as “you”.

Activities other than copying, distribution and modification are not covered by this License; they are outside its scope. The act of running the Program is not restricted, and the output from the Program is covered only if its contents constitute a work based on the Program (independent of having been made by running the Program). Whether that is true depends on what the Program does.

1. You may copy and distribute verbatim copies of the Program's source code as you receive it, in any medium, provided that you conspicuously and appropriately publish on each copy an appropriate copyright notice and disclaimer of warranty; keep intact all the notices that refer to this License and to the absence of any warranty; and give any other recipients of the Program a copy of this License along with the Program.

You may charge a fee for the physical act of transferring a copy, and you may at your option offer warranty protection in exchange for a fee.

2. You may modify your copy or copies of the Program or any portion of it, thus forming a work based on the Program, and copy and distribute such modifications or work under the terms of Section 1 above, provided that you also meet all of these conditions:

1. You must cause the modified files to carry prominent notices stating that you changed the files and the date of any change.

b) You must cause any work that you distribute or publish, that in whole or in part contains or is derived from the Program or any part thereof, to be licensed as a whole at no charge to all third parties under the terms of this License.

c) If the modified program normally reads commands interactively when run, you must cause it, when started running for such interactive use in the most ordinary way, to print or display an announcement including an appropriate copyright notice and a notice that there is no warranty (or else, saying that you provide a warranty) and that users may redistribute the program under these conditions, and telling the user how to view a copy of this License. (Exception: if the Program itself is interactive but does not normally print such an announcement, your work based on the Program is not required to print an announcement.)

These requirements apply to the modified work as a whole. If identifiable sections of that work are not derived from the Program, and can be reasonably considered independent and separate works in themselves, then this License, and its terms, do not apply to those sections when you distribute them as separate works. But when you distribute the same sections as part of a whole which is a work based on the Program, the distribution of the whole must be on the terms of this License, whose permissions for other licensees extend to the entire whole, and thus to each and every part regardless of who wrote it.

Thus, it is not the intent of this section to claim rights or contest your rights to work written entirely by you; rather, the intent is to exercise the right to control the distribution of derivative or collective works based on the Program.

In addition, mere aggregation of another work not based on the Program with the Program (or with a work based on the Program) on a volume of a storage or distribution medium does not bring the other work under the scope of this License.

3. You may copy and distribute the Program (or a work based on it, under Section 2) in object code or executable form under the terms of Sections 1 and 2 above provided that you also do one of the following:

1. Accompany it with the complete corresponding machine-readable source code, which must be distributed under the terms of Sections 1 and 2 above on a medium customarily used for software interchange; or,
- b) Accompany it with a written offer, valid for at least three years, to give any third party, for a charge no more than your cost of physically performing source distribution, a

complete machine-readable copy of the corresponding source code, to be distributed under the terms of Sections 1 and 2 above on a medium customarily used for software interchange; or,

c) Accompany it with the information you received as to the offer to distribute corresponding source code. (This alternative is allowed only for noncommercial distribution and only if you received the program in object code or executable form with such an offer, in accord with Subsection b above.)

The source code for a work means the preferred form of the work for making modifications to it. For an executable work, complete source code means all the source code for all modules it contains, plus any associated interface definition files, plus the scripts used to control compilation and installation of the executable. However, as a special exception, the source code distributed need not include anything that is normally distributed (in either source or binary form) with the major components (compiler, kernel, and so on) of the operating system on which the executable runs, unless that component itself accompanies the executable.

If distribution of executable or object code is made by offering access to copy from a designated place, then offering equivalent access to copy the source code from the same place counts as distribution of the source code, even though third parties are not compelled to copy the source along with the object code.

4. You may not copy, modify, sublicense, or distribute the Program except as expressly provided under this License. Any attempt otherwise to copy, modify, sublicense or distribute the Program is void, and will automatically terminate your rights under this License.

However, parties who have received copies, or rights, from you under this License will not have their licenses terminated so long as such parties remain in full compliance.

5. You are not required to accept this License, since you have not signed it. However, nothing else grants you permission to modify or distribute the Program or its derivative works. These actions are prohibited by law if you do not accept this License. Therefore, by modifying or distributing the Program (or any work based on the Program), you indicate your acceptance of this License to do so, and all its terms and conditions for copying, distributing or modifying the Program or works based on it.

6. Each time you redistribute the Program (or any work based on the Program), the recipient automatically receives a license from the original licensor to copy, distribute or modify the Program subject to these terms and conditions. You may not impose any further restrictions on the recipients' exercise of the rights granted herein.

You are not responsible for enforcing compliance by third parties to this License.

1. If, as a consequence of a court judgment or allegation of patent infringement or for any other reason (not limited to patent issues), conditions are imposed on you (whether by court order, agreement or otherwise) that contradict the conditions of this License, they do not excuse you from the conditions of this License. If you cannot distribute so as to satisfy simultaneously your obligations under this License and any other pertinent obligations, then as a consequence you may not distribute the Program at all. For example, if a patent license would not permit royalty-free redistribution of the Program by all those who receive copies directly or indirectly through you, then the only way you could satisfy both it and this License would be to refrain entirely from distribution of the Program.

If any portion of this section is held invalid or unenforceable under any particular circumstance, the balance of the section is intended to apply and the section as a whole is intended to apply in other circumstances.

It is not the purpose of this section to induce you to infringe any patents or other property right claims or to contest validity of any such claims; this section has the sole purpose of



protecting the integrity of the free software distribution system, which is implemented by public license practices. Many people have made generous contributions to the wide range of software distributed through that system in reliance on consistent application of that system; it is up to the author/donor to decide if he or she is willing to distribute software through any other system and a licensee cannot impose that choice.

This section is intended to make thoroughly clear what is believed to be a consequence of the rest of this License.

1. If the distribution and/or use of the Program is restricted in certain countries either by patents or by copyrighted interfaces, the original copyright holder who places the Program under this License may add an explicit geographical distribution limitation excluding those countries, so that distribution is permitted only in or among countries not thus excluded. In such case, this License incorporates the limitation as if written in the body of this License.

1. The Free Software Foundation may publish revised and/or new versions of the General Public License from time to time. Such new versions will be similar in spirit to the present version, but may differ in detail to address new problems or concerns.

Each version is given a distinguishing version number. If the Program specifies a version number of this License which applies to it and “any later version”, you have the option of following the terms and conditions either of that version or of any later version published by the Free Software Foundation. If the Program does not specify a version number of this License, you may choose any version ever published by the Free Software Foundation.

10. If you wish to incorporate parts of the Program into other free programs whose distribution conditions are different, write to the author to ask for permission. For software which is copyrighted by the Free Software Foundation, write to the Free Software Foundation; we sometimes make exceptions for this. Our decision will be guided by the two goals of preserving the free status of all derivatives of our free software and of promoting the sharing and reuse of software generally.

#### NO WARRANTY

11. BECAUSE THE PROGRAM IS LICENSED FREE OF CHARGE, THERE IS NO WARRANTY FOR THE PROGRAM, TO THE EXTENT PERMITTED BY APPLICABLE LAW. EXCEPT WHEN OTHERWISE STATED IN WRITING THE COPYRIGHT HOLDERS AND/OR OTHER PARTIES PROVIDE THE PROGRAM “AS IS” WITHOUT WARRANTY OF ANY KIND, EITHER EXPRESSED OR IMPLIED, INCLUDING, BUT NOT LIMITED TO, THE IMPLIED WARRANTIES OF MERCHANTABILITY AND FITNESS FOR A PARTICULAR PURPOSE. THE ENTIRE RISK AS TO THE QUALITY AND PERFORMANCE OF THE PROGRAM IS WITH YOU. SHOULD THE PROGRAM PROVE DEFECTIVE, YOU ASSUME THE COST OF ALL NECESSARY SERVICING, REPAIR OR CORRECTION.

12. IN NO EVENT UNLESS REQUIRED BY APPLICABLE LAW OR AGREED TO IN WRITING WILL ANY COPYRIGHT HOLDER, OR ANY OTHER PARTY WHO MAY MODIFY AND/OR REDISTRIBUTE THE PROGRAM AS PERMITTED ABOVE, BE LIABLE TO YOU FOR DAMAGES, INCLUDING ANY GENERAL, SPECIAL, INCIDENTAL OR CONSEQUENTIAL DAMAGES ARISING OUT OF THE USE OR INABILITY TO USE THE PROGRAM (INCLUDING BUT NOT LIMITED TO LOSS OF DATA OR DATA BEING RENDERED INACCURATE OR LOSSES SUSTAINED BY YOU OR THIRD PARTIES OR A FAILURE OF THE PROGRAM TO OPERATE WITH ANY OTHER PROGRAMS), EVEN IF SUCH HOLDER OR OTHER PARTY HAS BEEN ADVISED OF THE POSSIBILITY OF SUCH DAMAGES.

END OF TERMS AND CONDITIONS

## How to Apply These Terms to Your New Programs

If you develop a new program, and you want it to be of the greatest possible use to the public, the best way to achieve this is to make it free software which everyone can redistribute and change under these terms.

To do so, attach the following notices to the program. It is safest to attach them to the start of each source file to most effectively convey the exclusion of warranty; and each file should have at least the “copyright” line and a pointer to where the full notice is found.

<one line to give the program’s name and a brief idea of what it does.>  
Copyright © <year> <name of author>

This program is free software; you can redistribute it and/or modify it under the terms of the GNU General Public License as published by the Free Software foundation; either version 2 of the License, or (at your option) any later version.

This program is distributed in the hope that it will be useful, but WITHOUT ANY WARRANTY; without even the implied warranty of MERCHANTABILITY or FITNESS FOR A PARTICULAR PURPOSE. See the GNU General Public License for more details.

You should have received a copy of the GNU General Public License along with this program; if not, write to the Free Software Foundation, Inc., 59 Temple Place, Suite 330, Boston, MA 02111-1307 USA

Also add information on how to contact you by electronic and paper mail.

If the program is interactive, make it output a short notice like this when it starts in an interactive mode:

Gnomovision version 69, Copyright © year name of author Gnomovision comes with ABSOLUTELY NO WARRANTY; for details type `show w`. This is free software, and you are welcome to redistribute it under certain conditions; type `show c` for details.

The hypothetical commands `show w` and `show c` should show the appropriate parts of the General Public License. Of course, the commands you use may be called something other than `show w` and `show c`; they could even be mouse-clicks or menu items—whatever suits your program.

You should also get your employer (if you work as a programmer) or your school, if any, to sign a “copyright disclaimer” for the program, if necessary. Here is a sample; alter the names:

Yoyodyne, Inc., hereby disclaims all copyright interest in the program `Gnomovision` (which makes passes at compilers) written by James Hacker.

<signature of Ty Coon>, 1 April 1989  
Ty Coon, President of Vice

This General Public License does not permit incorporating your program into proprietary programs. If your program is a subroutine library, you may consider it more useful to permit linking proprietary applications with the library. If this is what you want to do, use the GNU Library General Public License instead of this License.

## Appendix 7: GNU Lesser General Public License

---

GNU LESSER GENERAL PUBLIC LICENSE. Version 2.1, February 1999. Copyright © 1991, 1999 Free Software Foundation, Inc. 59 Temple Place, Suite 330, Boston, MA 02111-1307 USA. Everyone is permitted to copy and distribute verbatim copies of this license document, but changing it is not allowed. [This is the first released version of the Lesser GPL. It also counts as the successor of the GNU Library Public License, version 2, hence the version number 2.1.]

### Preamble

The licenses for most software are designed to take away your freedom to share and change it. By contrast, the GNU General Public Licenses are intended to guarantee your freedom to share and change free software—to make sure the software is free for all its users.

This license, the Lesser General Public License, applies to some specially designated software packages—typically libraries—of the Free Software Foundation and other authors who decide to use it. You can use it too, but we suggest you first think carefully about whether this license or the ordinary General Public License is the better strategy to use in any particular case, based on the explanations below.

When we speak of free software, we are referring to freedom of use, not price. Our General Public Licenses are designed to make sure that you have the freedom to distribute copies of free software (and charge for this service if you wish); that you receive source code or can get it if you want it; that you can change the software and use pieces of it in new free programs; and that you are informed that you can do these things.

To protect your rights, we need to make restrictions that forbid distributors to deny you these rights or to ask you to surrender these rights. These restrictions translate to certain responsibilities for you if you distribute copies of the library or if you modify it.

For example, if you distribute copies of the library, whether gratis or for a fee, you must give the recipients all the rights that we gave you. You must make sure that they, too, receive or can get the source code. If you link other code with the library, you must provide complete object files to the recipients, so that they can relink them with the library after making changes to the library and recompiling it. And you must show them these terms so they know their rights. We protect your rights with a two-step method: (1) we copyright the library, and (2) we offer you this license, which gives you legal permission to copy, distribute and/or modify the library.

To protect each distributor, we want to make it very clear that there is no warranty for the free library. Also, if the library is modified by someone else and passed on, the recipients should know that what they have is not the original version, so that the original author's reputation will not be affected by problems that might be introduced by others.

Finally, software patents pose a constant threat to the existence of any free program. We wish to make sure that a company cannot effectively restrict the users of a free program by obtaining a restrictive license from a patent holder. Therefore, we insist that any patent license obtained for a version of the library must be consistent with the full freedom of use specified in this license.

Most GNU software, including some libraries, is covered by the ordinary GNU General Public License. This license, the GNU Lesser General Public License, applies to certain designated libraries, and is quite different from the ordinary General Public License. We use this license for certain libraries in order to permit linking those libraries into non-free programs.

When a program is linked with a library, whether statically or using a shared library, the combination of the two is legally speaking a combined work, a derivative of the original library. The ordinary General Public License therefore permits such linking only if the entire combination fits its criteria of freedom.

The Lesser General Public License permits more lax criteria for linking other code with the library.

We call this license the “Lesser” General Public License because it does Less to protect the user’s freedom than the ordinary General Public License. It also provides other free software developers Less of an advantage over competing non-free programs. These disadvantages are the reason we use the ordinary General Public License for many libraries. However, the Lesser license provides advantages in certain special circumstances.

For example, on rare occasions, there may be a special need to encourage the widest possible use of a certain library, so that it becomes a de-facto standard. To achieve this, non-free programs must be allowed to use the library. A more frequent case is that a free library does the same job as widely used non-free libraries. In this case, there is little to gain by limiting the free library to free software only, so we use the Lesser General Public License.

In other cases, permission to use a particular library in non-free programs enables a greater number of people to use a large body of free software. For example, permission to use the GNU C Library in non-free programs enables many more people to use the whole GNU operating system, as well as its variant, the GNU/Linux operating system.

Although the Lesser General Public License is Less protective of the users’ freedom, it does ensure that the user of a program that is linked with the Library has the freedom and the wherewithal to run that program using a modified version of the Library.

The precise terms and conditions for copying, distribution and modification follow. Pay close attention to the difference between a “work based on the library” and a “work that uses the library”. The former contains code derived from the library, whereas the latter must be combined with the library in order to run.

#### GNU LESSER GENERAL PUBLIC LICENSE. TERMS AND CONDITIONS FOR COPYING, DISTRIBUTION AND MODIFICATION

1. This License Agreement applies to any software library or other program which contains a notice placed by the copyright holder or other authorized party saying it may be distributed under the terms of this Lesser General Public License (also called “this License”). Each licensee is addressed as “you”.

A “library” means a collection of software functions and/or data prepared so as to be conveniently linked with application programs (which use some of those functions and data) to form executables.

The “Library”, below, refers to any such software library or work which has been distributed under these terms. A “work based on the Library” means either the Library or any derivative work under copyright law: that is to say, a work containing the Library or a portion of it, either verbatim or with modifications and/or translated straightforwardly into another language. (Hereinafter, translation is included without limitation in the term “modification”.)

“Source code” for a work means the preferred form of the work for making modifications to it. For a library, complete source code means all the source code for all modules it contains, plus any associated interface definition files, plus the scripts used to control compilation and installation of the library.

Activities other than copying, distribution and modification are not covered by this License; they are outside its scope. The act of running a program using the Library is not restricted, and output from such a program is covered only if its contents constitute a work based on the Library (independent of the use of the Library in a tool for writing it). Whether that is true depends on what the Library does and what the program that uses the Library does.

1. You may copy and distribute verbatim copies of the Library’s complete source code as you receive it, in any medium, provided that you conspicuously and appropriately publish on each copy an appropriate copyright notice and disclaimer of warranty; keep intact all the notices that refer to this License and to the absence of any warranty; and distribute a copy of this License along with the Library.

You may charge a fee for the physical act of transferring a copy, and you may at your option offer warranty protection in exchange for a fee.

2. You may modify your copy or copies of the Library or any portion of it, thus forming a work based on the Library, and copy and distribute such modifications or work under the terms of Section 1 above, provided that you also meet all of these conditions:

1. The modified work must itself be a software library.

b) You must cause the files modified to carry prominent notices stating that you changed the files and the date of any change.

c) You must cause the whole of the work to be licensed at no charge to all third parties under the terms of this License.

d) If a facility in the modified Library refers to a function or a table of data to be supplied by an application program that uses the facility, other than as an argument passed when the facility is invoked, then you must make a good faith effort to ensure that, in the event an application does not supply such function or table, the facility still operates, and performs whatever part of its purpose remains meaningful. (For example, a function in a library to compute square roots has a purpose that is entirely well-defined independent of the application. Therefore, Subsection 2d requires that any application-supplied function or table used by this function must be optional: if the application does not supply it, the square root function must still compute square roots.)

These requirements apply to the modified work as a whole. If identifiable sections of that work are not derived from the Library, and can be reasonably considered independent and separate works in themselves, then this License, and its terms, do not apply to those sections when you distribute them as separate works. But when you distribute the same sections as part of a whole which is a work based on the Library, the distribution of the whole must be on the terms of

this License, whose permissions for other licensees extend to the entire whole, and thus to each and every part regardless of who wrote it.

Thus, it is not the intent of this section to claim rights or contest your rights to work written entirely by you; rather, the intent is to exercise the right to control the distribution of derivative or collective works based on the Library.

In addition, mere aggregation of another work not based on the Library with the Library (or with a work based on the Library) on a volume of a storage or distribution medium does not bring the other work under the scope of this License.

3. You may opt to apply the terms of the ordinary GNU General Public License instead of this License to a given copy of the Library. To do this, you must alter all the notices that refer to this License, so that they refer to the ordinary GNU General Public License, version 2, instead of to this License. (If a newer version than version 2 of the ordinary GNU General Public License has appeared, then you can specify that version instead if you wish.) Do not make any other change in these notices.

Once this change is made in a given copy, it is irreversible for that copy, so the ordinary GNU General Public License applies to all subsequent copies and derivative works made from that copy.

This option is useful when you wish to copy part of the code of the Library into a program that is not a library.

4. You may copy and distribute the Library (or a portion or derivative of it, under Section 2) in object code or executable form under the terms of Sections 1 and 2 above provided that you accompany it with the complete corresponding machine-readable source code, which must be distributed under the terms of Sections 1 and 2 above on a medium customarily used for software interchange.

If distribution of object code is made by offering access to copy from a designated place, then offering equivalent access to copy the source code from the same place satisfies the requirement to distribute the source code, even though third parties are not compelled to copy the source along with the object code.

5. A program that contains no derivative of any portion of the Library, but is designed to work with the Library by being compiled or linked with it, is called a “work that uses the Library”. Such a work, in isolation, is not a derivative work of the Library, and therefore falls outside the scope of this License.

However, linking a “work that uses the Library” with the Library creates an executable that is a derivative of the Library (because it contains portions of the Library), rather than a “work that uses the library”. The executable is therefore covered by this License. Section 6 states terms for distribution of such executables.

When a “work that uses the Library” uses material from a header file that is part of the Library, the object code for the work may be a derivative work of the Library even though the source code is not. Whether this is true is especially significant if the work can be linked without the Library, or if the work is itself a library. The threshold for this to be true is not precisely defined by law.

If such an object file uses only numerical parameters, data structure layouts and accessors, and small macros and small inline functions (ten lines or less in length), then the use of the object file is unrestricted, regardless of whether it is legally a derivative work. (Executables containing this object code plus portions of the Library will still fall under Section 6.)

Otherwise, if the work is a derivative of the Library, you may distribute the object code for the work under the terms of Section 6. Any executables containing that work also fall under Section 6, whether or not they are linked directly with the Library itself.

6. As an exception to the Sections above, you may also combine or link a “work that uses the Library” with the Library to produce a work containing portions of the Library, and distribute that work under terms of your choice, provided that the terms permit modification of the work for the customer’s own use and reverse engineering for debugging such modifications.

You must give prominent notice with each copy of the work that the Library is used in it and that the Library and its use are covered by this License. You must supply a copy of this License. If the work during execution displays copyright notices, you must include

the copyright notice for the Library among them, as well as a reference directing the user to the copy of this License. Also, you must do one of these things:

1. Accompany the work with the complete corresponding machine-readable source code for the Library including whatever changes were used in the work (which must be distributed under Sections 1 and 2 above); and, if the work is an executable linked with the Library, with the complete machine-readable “work that uses the Library”, as object code and/or source code, so that the user can modify the Library and then relink to produce a modified executable containing the modified Library. (It is understood that the user who changes the contents of definitions files in the Library will not necessarily be able to recompile the application to use the modified definitions.)
  - b) Use a suitable shared library mechanism for linking with the Library. A suitable mechanism is one that (1) uses at run time a copy of the library already present on the user’s computer system, rather than copying library functions into the executable, and (2) will operate properly with a modified version of the library, if the user installs one, as long as the modified version is interface-compatible with the version that the work was made with.
  - c) Accompany the work with a written offer, valid for at least three years, to give the same user the materials specified in Subsection 6a, above, for a charge no more than the cost of performing this distribution.
  - d) If distribution of the work is made by offering access to copy from a designated place, offer equivalent access to copy the above specified materials from the same place.
  - e) Verify that the user has already received a copy of these materials or that you have already sent this user a copy.

For an executable, the required form of the “work that uses the Library” must include any data and utility programs needed for reproducing the executable from it. However, as a special exception, the materials to be distributed need not include anything that is normally distributed (in either source or binary form) with the major components (compiler, kernel, and so on) of the operating system on which the executable runs, unless that component itself accompanies the executable.

It may happen that this requirement contradicts the license restrictions of other proprietary libraries that do not normally accompany the operating system. Such a contradiction means you cannot use both them and the Library together in an executable that you distribute.

1. You may place library facilities that are a work based on the Library side-by-side in a single library together with other library facilities not covered by this License, and distribute such a combined library, provided that the separate distribution of the work based on the Library and of the other library facilities is otherwise permitted, and provided that you do these two things:
  1. Accompany the combined library with a copy of the same work based on the Library, uncombined with any other library facilities. This must be distributed under the terms of the Sections above.
  - b) Give prominent notice with the combined library of the fact that part of it is a work based on the Library, and explaining where to find the accompanying uncombined form of the same work.
1. You may not copy, modify, sublicense, link with, or distribute the Library except as expressly provided under this License. Any attempt otherwise to copy, modify, sublicense, link with, or distribute the Library is void, and will automatically terminate your rights under this License. However, parties who have received copies,

or rights, from you under this License will not have their licenses terminated so long as such parties remain in full compliance.

1. You are not required to accept this License, since you have not signed it. However, nothing else grants you permission to modify or distribute the Library or its derivative works. These actions are prohibited by law if you do not accept this License. Therefore, by modifying or distributing the Library (or any work based on the Library), you indicate your acceptance of this License to do so, and all its terms and conditions for copying, distributing or modifying the Library or works based on it.

10. Each time you redistribute the Library (or any work based on the Library), the recipient automatically receives a license from the original licensor to copy, distribute, link with or modify the Library subject to these terms and conditions. You may not impose any further restrictions on the recipients' exercise of the rights granted herein. You are not responsible for enforcing compliance by third parties with this License.

11. If, as a consequence of a court judgment or allegation of patent infringement or for any other reason (not limited to patent issues), conditions are imposed on you (whether by court order, agreement or otherwise) that contradict the conditions of this License, they do not excuse you from the conditions of this License. If you cannot distribute so as to satisfy simultaneously your obligations under this License and any other pertinent obligations, then as a consequence you may not distribute the Library at all. For example, if a patent license would not permit royalty-free redistribution of the Library by all those who receive copies directly or indirectly through you, then the only way you could satisfy both it and this License would be to refrain entirely from distribution of the Library.

If any portion of this section is held invalid or unenforceable under any particular circumstance, the balance of the section is intended to apply, and the section as a whole is intended to apply in other circumstances.

It is not the purpose of this section to induce you to infringe any patents or other property right claims or to contest validity of any such claims; this section has the sole purpose of protecting the integrity of the free software distribution system which is implemented by public license practices. Many people have made generous contributions to the wide range of software distributed through that system in reliance on consistent application of that system; it is up to the author/donor to decide if he or she is willing to distribute software through any other system and a licensee cannot impose that choice.

This section is intended to make thoroughly clear what is believed to be a consequence of the rest of this License.

12. If the distribution and/or use of the Library is restricted in certain countries either by patents or by copyrighted interfaces, the original copyright holder who places the Library under this License may add an explicit geographical distribution limitation excluding those countries, so that distribution is permitted only in or among countries not thus excluded. In such case, this License incorporates the limitation as if written in the body of this License.

13. The Free Software Foundation may publish revised and/or new versions of the Lesser General Public License from time to time. Such new versions will be similar in spirit to the present version, but may differ in detail to address new problems or concerns.

Each version is given a distinguishing version number. If the Library specifies a version number of this License which applies to it and “any later version”, you have the option of following the terms and conditions either of that version or of any later version published by the Free Software Foundation. If the Library does not specify a license version number, you may choose any version ever published by the Free Software Foundation.



14. If you wish to incorporate parts of the Library into other free programs whose distribution conditions are incompatible with these, write to the author to ask for permission. For software which is copyrighted by the Free Software Foundation, write to the Free Software Foundation; we sometimes make exceptions for this. Our decision will be guided by the two goals of preserving the free status of all derivatives of our free software and of promoting the sharing and reuse of software generally.

#### NO WARRANTY

15. BECAUSE THE LIBRARY IS LICENSED FREE OF CHARGE, THERE IS NO WARRANTY FOR THE LIBRARY, TO THE EXTENT PERMITTED BY APPLICABLE LAW. EXCEPT WHEN OTHERWISE STATED IN WRITING THE COPYRIGHT HOLDERS AND/OR OTHER PARTIES PROVIDE THE LIBRARY “AS IS” WITHOUT WARRANTY OF ANY KIND, EITHER EXPRESSED OR IMPLIED, INCLUDING, BUT NOT LIMITED TO, THE IMPLIED WARRANTIES OF MERCHANTABILITY AND FITNESS FOR A PARTICULAR PURPOSE. THE ENTIRE RISK AS TO THE QUALITY AND PERFORMANCE OF THE LIBRARY IS WITH YOU. SHOULD THE LIBRARY PROVE DEFECTIVE, YOU ASSUME THE COST OF ALL NECESSARY SERVICING, REPAIR OR CORRECTION.

16. IN NO EVENT UNLESS REQUIRED BY APPLICABLE LAW OR AGREED TO IN WRITING WILL ANY COPYRIGHT HOLDER, OR ANY OTHER PARTY WHO MAY MODIFY AND/OR REDISTRIBUTE THE LIBRARY AS PERMITTED ABOVE, BE LIABLE TO YOU FOR DAMAGES, INCLUDING ANY GENERAL, SPECIAL, INCIDENTAL OR CONSEQUENTIAL DAMAGES ARISING OUT OF THE USE OR INABILITY TO USE THE LIBRARY (INCLUDING BUT NOT LIMITED TO LOSS OF DATA OR DATA BEING RENDERED INACCURATE OR LOSSES SUSTAINED BY YOU OR THIRD PARTIES OR A FAILURE OF THE LIBRARY TO OPERATE WITH ANY OTHER SOFTWARE), EVEN IF SUCH HOLDER OR OTHER PARTY HAS BEEN ADVISED OF THE POSSIBILITY OF SUCH DAMAGES.

#### END OF TERMS AND CONDITIONS

#### How to Apply These Terms to Your New Libraries

If you develop a new library, and you want it to be of the greatest possible use to the public, we recommend making it free software that everyone can redistribute and change. You can do so by permitting redistribution under these terms (or, alternatively, under the terms of the ordinary General Public License). To apply these terms, attach the following notices to the library. It is safest to attach them to the start of each source file to most effectively convey the exclusion of warranty; and each file should have at least the “copyright” line and a pointer to where the full notice is found.

```
<one line to give the library's name and a brief idea of what it does.>
Copyright © <year> <name of author>
```

This library is free software; you can redistribute it and/or modify it under the terms of the GNU Lesser General Public License as published by the Free Software Foundation; either version 2.1 of the License, or (at your option) any later version. This library is distributed in the hope that it will be useful, but WITHOUT ANY WARRANTY; without even the implied warranty of MERCHANTABILITY or FITNESS FOR A PARTICULAR PURPOSE.

See the GNU Lesser General Public License for more details. You should have received a copy of the GNU Lesser General Public License along with this library; if not, write to the Free Software Foundation, Inc., 59 Temple Place, Suite 330, Boston, MA 02111-1307 USA

Also add information on how to contact you by electronic and paper mail. You should also get your employer (if you work as a programmer) or your school, if any, to sign a

“copyright disclaimer” for the library, if necessary. Here is a sample; alter the names:

Yoyodyne, Inc., hereby disclaims all copyright interest in the library `Frob' (a library for tweaking knobs) written by James Random Hacker.

<signature of Ty Coon>, 1 April 1990

Ty Coon, President of Vice

## List of Figures

---

Figure 2-1: Evaluation Board EVA2 with ADNP/1520.....	6
Figure 3-1: Main components of the Evaluation Board DNP/EVA2-SV4.....	7
Figure 4-1: Position of the ADNP/1520 on the Evaluation Board.....	11
Figure 4-2: Overview about the required cable Connections .....	12
Figure 4-3: Serial Link Connection .....	13
Figure 4-4: Ethernet Link Connection using a Hub/Switch .....	14
Figure 4-5: Ethernet Link Connection using a crossover cable .....	14
Figure 4-6: Power supply Connection.....	15
Figure 5-1: Interface property Sheet .....	16
Figure 5-2: Baud rate Settings .....	17
Figure 5-3: ROM-DOS boot process .....	18
Figure 5-4: ROM-DOS command prompt .....	18
Figure 5-5: Starting the Web server.....	19
Figure 5-6: Communication check via PING .....	20
Figure 5-7: Communication check via ipconfig command .....	20
Figure 5-8: Web page shown by the MS-Internet Explorer .....	21
Figure 5-9: Transferring data to the ADNP/1520 .....	22
Figure 5-10: Selecting files and transfer protocol.....	22
Figure 5-11: Leaving the rb mode .....	23
Figure 5-12: Starting Linux .....	24
Figure 5-13: Linux login prompt .....	24
Figure 5-14: Login procedure via HyperTerminal.....	25
Figure 5-15: Login procedure via Telnet.....	26
Figure 5-16: Login procedure via FTP.....	27
Figure 5-17: FTP file transfer under DOS.....	28
Figure 5-18: File transfer with the Internet Explorer .....	28
Figure 5-19: Serial Port Settings under Minicom .....	29
Figure 5-20: ROM-DOS boot process in progress.....	30
Figure 5-21: After the ROM-DOS boot process.....	30
Figure 5-22: Running the DOS-based Web server .....	31
Figure 5-23: Ping Request.....	32
Figure 5-24: IP-address check via ifconfig.....	32
Figure 5-25: Web page shown by the Konqueror File Manager.....	33
Figure 5-26: Installing Linux from the Starter Kit CD-ROM.....	34
Figure 5-27: Selecting transfer protocol.....	34
Figure 5-28: File select in rb mode .....	35
Figure 5-29: File transfer in rb mode .....	35
Figure 5-30: Running Linux.....	36
Figure 5-31: Linux login .....	36

Figure 5-32: Login procedure via Minicom .....	37
Figure 5-33: Login procedure via Telnet.....	38
Figure 5-34: Login procedure via FTP.....	39
Figure 5-35: File transfer with Minicom.....	40
Figure 5-36: File transfer with the Konqueror.....	40
Figure 6-1: Changing the IP-address with ipadree.....	42
Figure 8-1: Chip-Select Allocation .....	50
Figure A5-1: Dimensions of the ADNP/1520 .....	53

## List of Tables

---

Table 1-1: Convention usage.....	4
Table 3-1: Jumper Settings to use COM3 in RS232 mode.....	10
Table 3-2: Jumper Settings to use COM3 in RS485 mode.....	10
Table 8-1: ADNP/1520 Pinout – Pin 1 to 32.....	44
Table 8-2: ADNP/1520 Pinout – Pin 33 to 64.....	45
Table 8-3: ADNP/1520 Pinout – Pin 65 to 96.....	46
Table 8-4: Pin assignment ADNP/1520 pin 97 to 128.....	47
Table A2-1: Pinout COM1 Connector .....	48
Table A2-2: Pinout COM2 Connector .....	48
Table A2-3: Pinout COM3 Connector .....	48
Table A2-4: COM3 RS232/485 Switch .....	49
Table A2-5: Pinout 10/100 Mbps Ethernet Connector.....	49
Table A2-6: Pinout Power Connector .....	49
Table A2-7: RCM Jumper Settings.....	49

## List of Appendixes

---

Appendix 1: Pin Assignment –128-pin QIL Connector (1. Part).....	44
Appendix 1: Pin Assignment –128-pin QIL Connector (2. Part).....	45
Appendix 1: Pin Assignment –128-pin QIL Connector (3. Part).....	46
Appendix 1: Pin Assignment –128-pin QIL Connector (4. Part).....	47
Appendix 2: Pin Assignment DNP/EVA2-SV4 Components .....	48
Appendix 3: Mechanical Dimensions .....	50
Appendix 4: GNU General Public License .....	54
Appendix 5: GNU Lesser General Public License .....	59
List of Figures.....	67
List of Tables.....	68
List of Appendixes.....	69
Contact .....	70
Document History.....	70

## Contact

---

**SSV Embedded Systems**  
Heisterbergallee 72  
D-30453 Hannover  
Tel. +49-(0)511-40000-0  
Fax. +49-(0)511-40000-40  
E-Mail: sales@ist1.de  
Internet: www.ssv-embedded.de

## Document History

---

Revision	Date		Name
1.0	24.03.2003	First Version	JNE
1.1	04.03.2003	Chapter added	JNE
1.2	15.07.2003	Some content corrections	KDW

This document is written only for the internal application. The contents of this document can change any time without announcement. There is taken over no guarantee for the accuracy of the statements. Copyright © **SSV EMBEDDED SYSTEMS 2003**. All rights reserved.

INFORMATION PROVIDED IN THIS DOCUMENT IS PROVIDED 'AS IS' WITHOUT WARRANTY OF ANY KIND. The user assumes the entire risk as to the accuracy and the use of this document. Some names within this document can be trademarks of their respective holders.